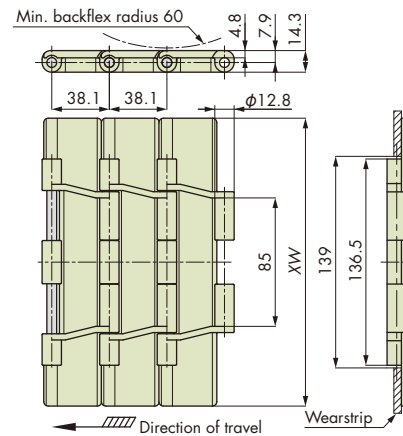
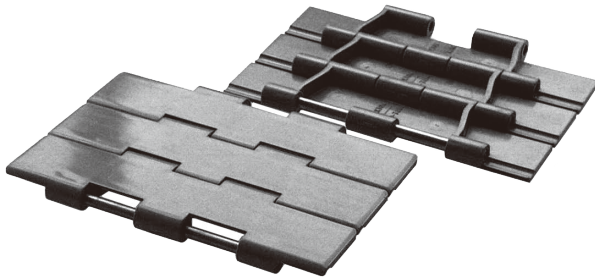


Plastic Top Chain

Digest

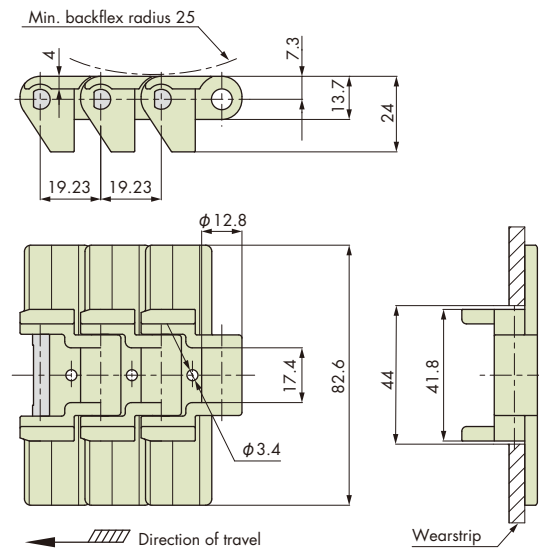
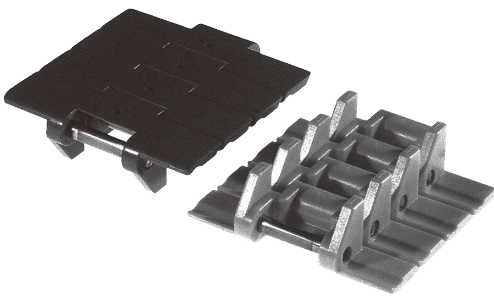
■ TTPDH-Y (Straight Running)



Material	Standard	Low friction/Wear resistant	Low friction	Top plate width XW	Max. allowable load kN{kgf}	Chain mass kg/m	Connecting pin
Material mark	—	LFG	WR				
Link color	Gray	Green	Dark green				
Chain type	TTPDH1905Y	TTPDH1905Y-LFG	TTPDH1905Y-WR	190.5	1.67 {170}	2.5	Knurled pins
	TTPDH2540Y	TTPDH2540Y-LFG	TTPDH2540Y-WR	254.0		3.0	
	TTPDH3048Y	TTPDH3048Y-LFG	TTPDH3048Y-WR	304.8		3.3	

- Note: 1. Made-to-order products.
 2. Number of links per unit: 80
 3. The chain width of 254.0 mm is cut by machining. The chain mark indicates information of the original.
 4. Plastic pin type is not available.

■ TP-YS (Straight Running)



Material	Low friction	High speed	Plate width	Max. allowable load kN{kgf}	Chain mass kg/m	Connecting pin
Material mark	WR	HS				
Link color	Dark green	Beige				
Chain type	TP-YS32-WR	TP-YS32-HS	82.6	0.83{85}	1.3	D-pin

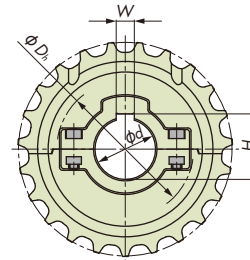
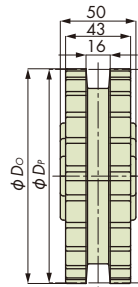
- Note: 1. Made-to-order products.
 2. Number of links per unit: 160
 3. Plastic pin type is not available.

Sprockets for TTP Chains

Engineering Plastic

Applicable Chain TTP, TTPH, TTPT, WT3835-K, WT3835-T

◆ Split Sprockets (Domestic Products)



Tsubaki model no.	Actual teeth	Effective teeth	Pitch diameter D_p	Outside diameter D_o	Bore shape	Bore diameter d	Keyway		Hub diameter D_h	Approx. mass kg	Material		Bolt tightening torque N·m{kgf·m}
							W	H			Body	Bolt/Nut	
TTP-21T25	21	10½	129.2	130.0	Round	φ25	8	28.3	90	0.4	Reinforced polyamide (color: black)	Stainless steel	5.7{0.58}
TTP-21T30						φ30	8	33.3					
TTP-21T35						φ35	10	38.3					
TTP-21T40						φ40	12	43.3					
TTP-21T45						φ45	14	48.8					
TTP-23T25	23	11½	141.2	142.0		φ25	8	28.3	90	0.5			
TTP-23T30						φ30	8	33.3					
TTP-23T35						φ35	10	38.3					
TTP-23T40						φ40	12	43.3					
TTP-23T45						φ45	14	48.8					
TTP-25T25	25	12½	153.2	154.5		φ25	8	28.3	94	0.5			
TTP-25T30						φ30	8	33.3					
TTP-25T35						φ35	10	38.3					
TTP-25T40						φ40	12	43.3					
TTP-25T45						φ45	14	48.8					
TTP-25T50					φ50	14	53.8						

Note: 1. Tsubaki model no. in boldface are standard products.

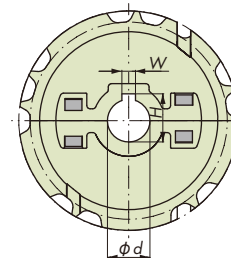
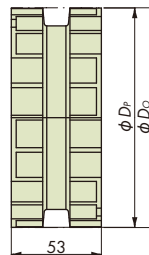
2. Operating temperature range: -20°C to 80°C

3. When assembling the halves of the sprocket, do not mix the halves with halves from other sprockets.

4. Cannot be used for WT3835G-M.

5. Use a cold rolled steel shaft.

◆ Split Sprockets (OEM Supplied Products)



Tsubaki model no.	Actual teeth	Effective teeth	Pitch diameter D_p	Outside diameter D_o	Bore shape	Bore diameter d	Keyway		Approx. mass kg	Material		Bolt tightening torque N·m{kgf·m}
							W	H		Body	Bolt/Nut	
TP-C12057NT-SPR	21	10½	129.26	129	Round	φ25	8	28.3	0.45	Reinforced polyamide (color: black)	Bolt: Stainless steel Nut: Brass + nickel-plated	6{0.61}
TP-C12058NT-SPR						φ30	8	33.3	0.44			
TP-C12059NT-SPR						φ35	10	38.3	0.42			
TP-C12060NT-SPR						φ40	12	43.3	0.42			
TP-C12104NT-SPR						φ25	8	28.3	0.48			
TP-C12105NT-SPR	23	11½	141.22	142		φ30	8	33.3	0.45			
TP-C12106NT-SPR						φ35	10	38.3	0.45			
TP-C12107NT-SPR						φ40	12	43.3	0.42			
TP-C12069NT-SPR	25	12½	153.20	154		φ25	8	28.3	0.6			
TP-C12070NT-SPR						φ30	8	33.3	0.59			
TP-C12071NT-SPR						φ35	10	38.3	0.57			
TP-C12072NT-SPR						φ40	12	43.3	0.55			

Note: 1. Tsubaki model no. in boldface are standard products.

2. Operating temperature range: -20°C to 80°C

3. When assembling the halves of the sprocket, do not mix the halves with halves from other sprockets.

4. Cannot be used for WT3835-K, WT3835-T, and WT3835G-M.

5. Use a cold rolled steel shaft.

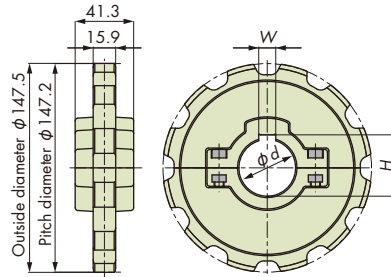
Sprockets & Idler Sprockets for TPS Chains

Engineering Plastic

Applicable Chain

TPS, TPH, TTUP, TTUP-LLPC, TTUPH, TPU, TPU-LH, TPUT-LH, TPU-USR, TPUH-BO, TTUP-M, TTUPT-M, TP-880TAB

◆ Split Sprockets (Domestic Products)



Tsubaki model no.	Teeth	Bore shape	Bore diameter d	Keyway		Approx. mass kg	Material			Bolt tightening torque N·m{kgf·m}
				W	H		Body	Bolt/Nut		
TTUP-12T25	12	Round	$\phi 25$	8	28.3	0.4	Reinforced polyamide (color: black)	Stainless steel	5.7{0.58}	
TTUP-12T30			$\phi 30$	8	33.3					
TTUP-12T35			$\phi 35$	10	38.3					
TTUP-12T40			$\phi 40$	12	43.3					
TTUP-12T45			$\phi 45$	14	48.8					

Note: 1. Tsubaki model no. in boldface are standard products.

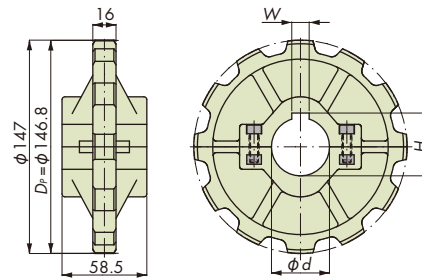
 2. Operating temperature range: -20°C to 80°C

3. When assembling the halves of the sprocket, do not mix the halves with halves from other sprockets.

4. Cannot be used for TPM and TPUM.

5. Use a cold rolled steel shaft.

◆ Split Sprockets (OEM Supplied Products)



Tsubaki model no.	Teeth	Bore shape	Bore diameter d	Keyway		Approx. mass kg	Material			Bolt tightening torque N·m{kgf·m}
				W	H		Body	Bolt	Nut	
TP-C12400T-SPR	12	Round	$\phi 25$	8	28.3	0.38	Reinforced polyamide (color: black)	Stainless steel	Brass + nickel-plated	6{0.61}
TP-C12711T-SPR			$\phi 30$	8	33.3	0.37				
TP-C12401T-SPR			$\phi 35$	10	38.3	0.35				
TP-C12402T-SPR			$\phi 40$	12	43.3	0.35				

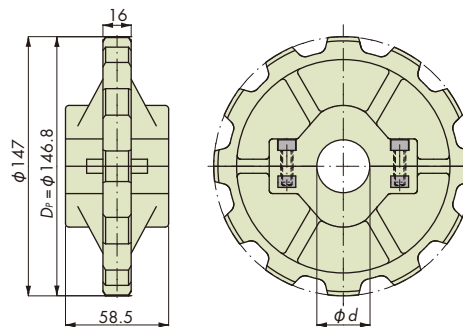
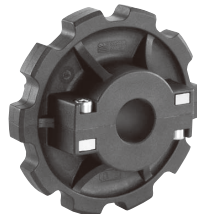
Note: 1. Tsubaki model no. in boldface are standard products.

 2. Operating temperature range: -20°C to 80°C

3. Cannot be used for TPM and TPUM.

4. Use a cold rolled steel shaft.

◆ Split Idler Sprockets



Tsubaki model no.	Teeth	Bore shape	Bore diameter d	Approx. mass kg	Material			Bolt tightening torque N·m{kgf·m}
					Body	Bolt	Nut	
TP-C12404T-IW	12	Round	$\phi 30$	0.31	Polyamide (color: black)	Stainless steel	Brass + nickel-plated	6{0.61}

Note: 1. Tsubaki model no. in boldface is a standard product.

 2. Operating temperature range: -20°C to 80°C

3. Cannot be used for TPM and TPUM.

4. Use a cold rolled steel shaft.