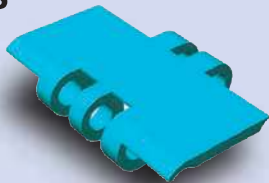


ULF

Ultra Low Friction Series

Ultra low friction
polyacetal
chain links

ULF (color: blue)

1. Protects conveyed items

A special material incorporating a silicone-based lubricant significantly lowers the coefficient of friction by 15% to 30% compared to that of LF Series (under dry conditions). Line pressure is reduced during accumulation, minimizing potential scratching or other damage to conveyed items.

2. Smooth divergence and accumulation of conveyed items

3. Less required drive power

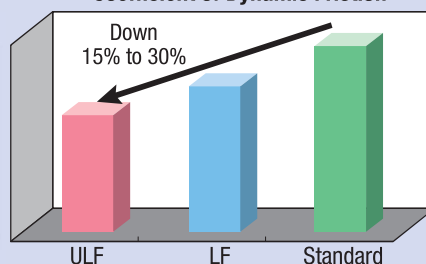
Caution: As ULF chain uses a silicone-based lubricant, refrain from using it where there is a risk of peeling during the printing process. Also, depending on usage conditions, ULF chain may generate more wear dust than LF chain.

Applications

- Ideal for conveying PET bottles and paper packs
- Ideal for use in accumulation areas just before casers and inspection equipment
- Ideal for combiners
- Ideal for reducing or eliminating lubricants (soapy water, etc.)
- When better slipperiness than the LF Series is desired

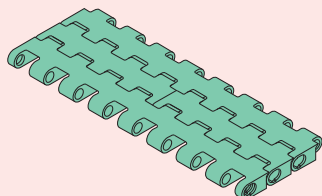


Coefficient of Dynamic Friction



UL

Low Friction Series

Low-friction polyacetal
chain links

UL (color: green)

1. Protects conveyed items

Coefficient of friction is 7% to 28% lower than Standard Series, resulting in reduced line pressure during accumulation and minimizing potential scratching or other damage to conveyed items.

2. Smooth divergence and accumulation of conveyed items

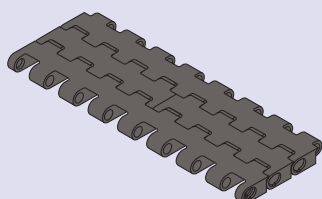
3. Less required drive power

Applications

- Versatile type of chain that can be used in a wide range of applications
- Ideal in high line pressure conditions where conveyed goods may be damaged

NLF

Low Friction Series

Low-friction polyacetal
chain links

NLF (color: dark gray)

1. Protects conveyed items

Coefficient of friction is 10% to 30% lower than Standard Series, resulting in reduced line pressure during accumulation and minimizing potential scratching or other damage to conveyed items.

2. Smooth divergence and accumulation of conveyed items

3. Less required drive power

Applications

- Versatile type of chain that can be used in a wide range of applications
- Ideal in high line pressure conditions where conveyed goods may be damaged