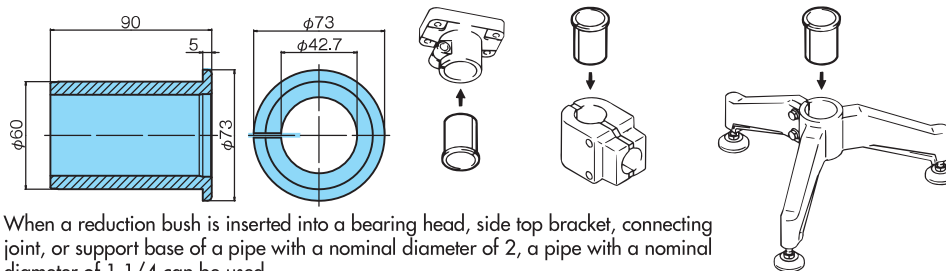


Frame Support Parts

Reduction Bush (RB)



The reduction bush can reduce the size of a pipe.



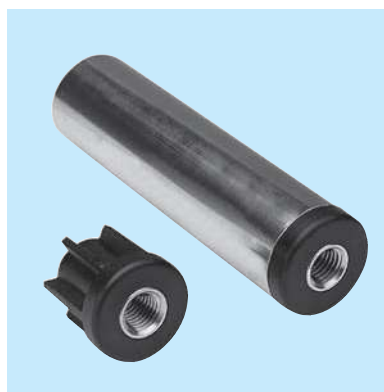
When a reduction bush is inserted into a bearing head, side top bracket, connecting joint, or support base of a pipe with a nominal diameter of 2, a pipe with a nominal diameter of 1 1/4 can be used.

Material: Body = Polyamide

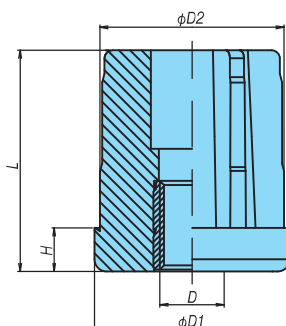
Tsubaki model no.	Pipe outside dia. mm (nominal dia.)
TP-C15206T-RB	42.7 (1 1/4)

Note: Standard product

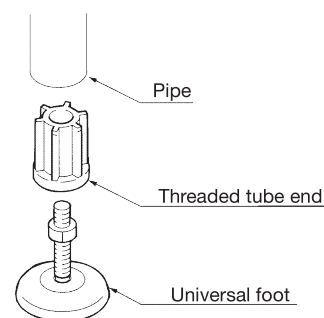
Threaded Tube End (SRB)



When this part is inserted into a pipe and used in combination with a universal foot, it can be used as a leg for a conveyor frame.



Material: Body = Polyamide
Bush = Nickel-plated brass

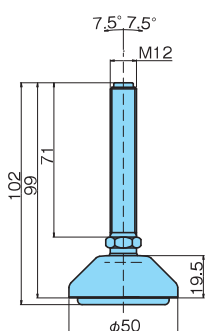


Tsubaki model no.	Pipe outside dia. mm (nominal dia.)	D	D1	D2	H	L
TP-C14767T-SRB	48.6 (1 1/2)	M16	48	45.8	10	55
TP-C14791T-SRB	60.5 (2)	M16	60	58	12	50

Note: 1. Standard product
2. Use a pipe with a thickness of 1.65mm.

Universal Foot (UF)

The universal foot can be used as a foot for a conveyor or other equipment. Use it on an inclined floor or in a place where the level needs adjustment. The hole-drillable type can be fixed to the floor.



Material: Bolt = Stainless steel (SUS304)
Main body plate = Reinforced polyamide
Antiskid rubber pad = Oil-resistant rubber: Shore hardness 70

Tsubaki model no.	Allowable load kN {kgf}
TP-C17107T-UF	12.0 {1220}

Note: 1. The allowable load is the maximum allowable load in a static state.
2. Standard product

Dimensions in mm