

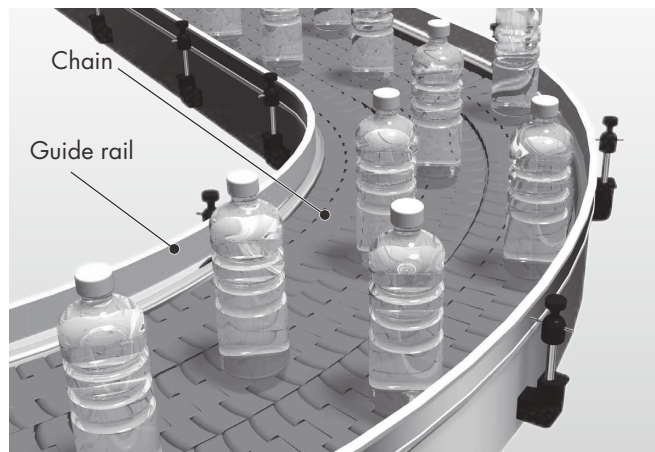
# Plastic Rails

## Applications

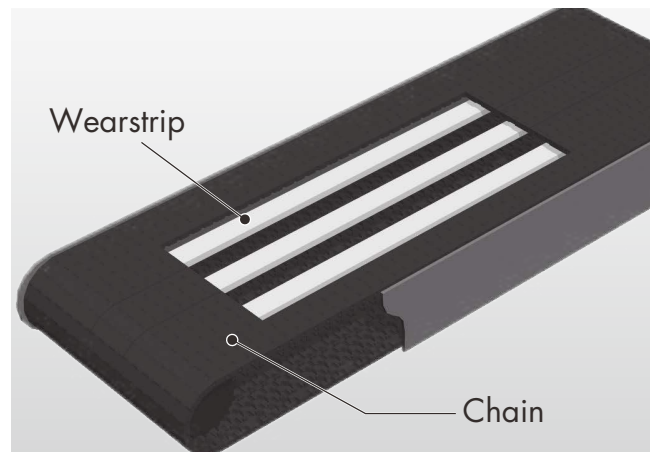
Using ultra-high molecular weight polyethylene (UHMW-PE) as the material, it exhibits excellent sliding characteristics and wear resistance. We have a wide variety of products that are widely used for rails.

## Installation Example

### ■ Use as Guide Rail for Supporting Products



### ■ Use as Wearstrips for Plastic Modular Chains



## List of Material Grades

Feature	Standard				Anti-thermal degradation	High-density polyethylene	Wear resistant	
Material grade	P	10-100	10-301	10-801	16-100E	84-100	10-605SS	10-365CP
Color	White	White	Green	Black	White	White	Yellow	Greenish brown

Feature	Electrostatic preventive	Standard extrusions		Electrostatic preventive extrusions	Only for dry condition	Oil impregnated	Special polyamide	Low friction/Wear resistant	
Material grade	10-806	10-100EX	10-301EX	10-806EX	M	10-309	SJ-CNO	PLF	PMW
Color	Black	White	Green	Black	Blue	Green	Purple	White	

Note: 1. The rail length expands and contracts due to temperature changes.

As a guide, it expands and contracts 0.2 mm every 1°C change per 1 m.

[Except only for dry condition (M) and special polyamide (SJ-CNO)]

Coefficient of thermal expansion

Material grade [excluding only for dry condition (M) and special polyamide (SJ-CNO)]:  $1.7 \times 10^{-4}/^{\circ}\text{C}$

Only for dry condition (M)/Special polyamide (SJ-CNO):  $9 \times 10^{-5}/^{\circ}\text{C}$

2. We use materials that comply with the Food Sanitation Act (Japan's Ministry of Health Notification No. 370).

[Not compatible with electrostatic preventive extrusions (10-806EX), only for dry condition (M) and special polyamide (SJ-CNO)]

## Features of Material Grade

Feature	Material grade	Features
Standard	P	The most common material grade uses ultra-high molecular weight polyethylene (UHMW-PE) with low water absorption, superior sliding properties, wear resistant, and chemical resistance.
	10-100	
	10-301	
	10-801	
Standard extrusions	10-100EX	It has lower friction than the standard, wear resistance, and is recommended for wear particles and scratches on conveyed products, that is, when you have trouble with countermeasures.
	10-301EX	
Low friction/Wear resistant	PLF	Suppresses deterioration due to heat compared to the standard.
	PMW	
Anti-thermal degradation	16-100E	Good dimensional stability and less strain.
High-density polyethylene	84-100	Greater wear resistance than standard.
Wear resistant	10-605SS	Further improved wear resistance than wear resistant (10-605SS).
	10-365CP	
Electrostatic preventive	10-806	Add electrostatic preventive performance based on standard, standard extrusion.
Electrostatic preventive extrusions	10-806EX	
Only for dry condition	M	Dedicated to dry conditions, it has excellent wear resistance and is recommended when you are having trouble generating abrasion powder.



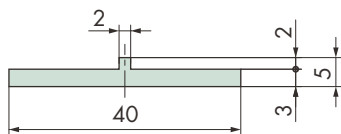
### Caution

The material for low friction and wear resistance (PLF and PMW) contains silicone-based lubricant. Therefore, do not use these rails for printing processes, or in cases where silicone will have an effect.

## Extruded Rail

## T Rails

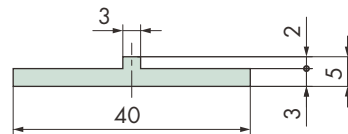
## ■ T Rails



Tsubaki model no.	Material grade	Color	Length m	Operating temperature range °C
<b>PR-T-W-26M</b>	10-100EX	White	26	-20 to 60
<b>PR-T-G-26M</b>	10-301EX	Green		

Note: 1. Standard products.  
2. Dimensions are nominal due to extruded products.

## ■ T-403 Rails

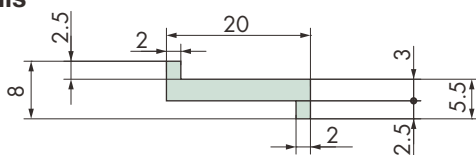


Tsubaki model no.	Material grade	Color	Length m	Operating temperature range °C
<b>PR-T403-W-26M</b>	10-100EX	White	26	-20 to 60
<b>PR-T403-G-26M</b>	10-301EX	Green		

Note: 1. Standard products.  
2. Dimensions are nominal due to extruded products.  
3. Equivalent to PRT340-P-G (color: green).

## Z Rails

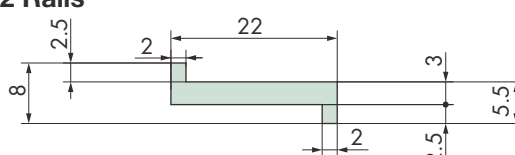
## ■ Z Rails



Tsubaki model no.	Material grade	Color	Length m	Operating temperature range °C
<b>PR-Z-W-26M</b>	10-100EX	White	26	-20 to 60
<b>PR-Z-G-26M</b>	10-301EX	Green		

Note: 1. Standard products.  
2. Dimensions are nominal due to extruded products.  
3. Equivalent to PRZ320-P-G (color: green).

## ■ Z22 Rails

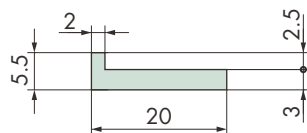


Tsubaki model no.	Material grade	Color	Length m	Operating temperature range °C
<b>PR-Z22-W-26M</b>	10-100EX	White	26	-20 to 60
<b>PR-Z22-G-26M</b>	10-301EX	Green		

Note: 1. Made-to-order products.  
2. Dimensions are nominal due to extruded products.

## L Rails

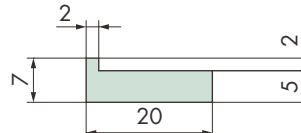
## ■ L Rails



Tsubaki model no.	Material grade	Color	Length m	Operating temperature range °C
<b>PR-L-W-26M</b>	10-100EX	White	26	-20 to 60
<b>PR-L-G-26M</b>	10-301EX	Green		

Note: 1. Standard products.  
2. Dimensions are nominal due to extruded products.  
3. Equivalent to PRL320-P-G (color: green).

## ■ L-5 Rails

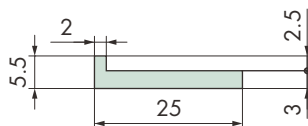


Tsubaki model no.	Material grade	Color	Length m	Operating temperature range °C
<b>PR-L5-W-20M</b>	10-100EX	White	20	-20 to 60
<b>PR-L5-G-20M</b>	10-301EX	Green		

Note: 1. Standard products.  
2. Dimensions are nominal due to extruded products.

## L Rails

## ■ L-25 Rails

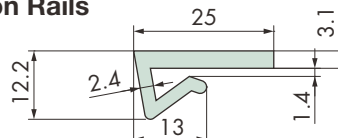


Tsubaki model no.	Material grade	Color	Length m	Operating temperature range °C
<b>PR-L25-W-20M</b>	10-100EX	White	20	-20 to 60
<b>PR-L25-G-20M</b>	10-301EX	Green		

Note: 1. Standard products.  
2. Dimensions are nominal due to extruded products.

## Snap-on Rails

## ■ Snap-on Rails

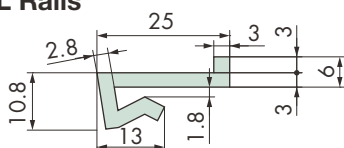


Tsubaki model no.	Material grade	Color	Length m	Operating temperature range °C
<b>PR-SPR-W-30M</b>	10-100EX	White	30	-20 to 60

Note: 1. Standard product.  
2. Dimensions is a nominal due to extruded product.

## Snap-on Rails

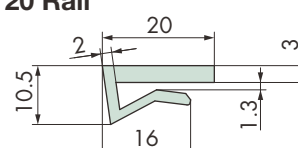
## ■ Snap-on L Rails



Tsubaki model no.	Material grade	Color	Length m	Operating temperature range °C
<b>PR-SPRL-W-3M</b>	10-100EX	White	3	-20 to 60

Note: 1. Standard product.  
2. Dimensions is a nominal due to extruded product.

## ■ Snap-on 20 Rail



Tsubaki model no.	Material grade	Color	Length m	Operating temperature range °C
<b>PR-SNA20-W-3M</b>	10-100EX	White	3	-20 to 60

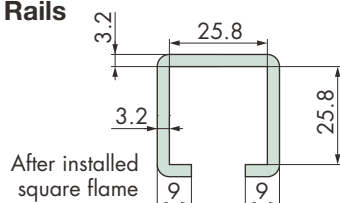
Note: 1. Standard product.  
2. Dimensions is a nominal due to extruded product.

# Plastic Rails

## Extruded Rail

### SJQ-5 Rails

#### ■ SJQ-5 Rails

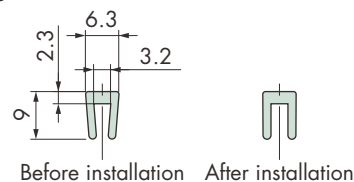


Tsubaki model no.	Material grade	Color	Length m	Operating temperature range °C
<b>PR-SJQ5-W-3M</b>	10-100EX	White	3	-20 to 60

Note: 1. Standard product.  
2. Dimensions is a nominal due to extruded product.

### V Rails

#### ■ V-3 Rails

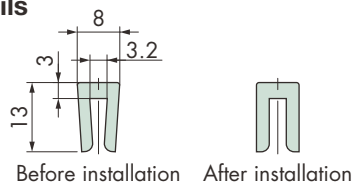


Tsubaki model no.	Material grade	Color	Length m	Operating temperature range °C
<b>PR-V3-W-100M</b>	10-100EX	White	100	-20 to 60

Note: 1. Standard product.  
2. Dimensions is a nominal due to extruded product.

### V Rails

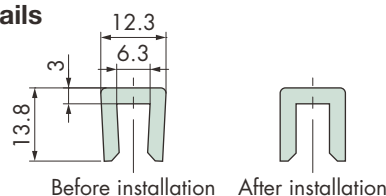
#### ■ V-3L Rails



Tsubaki model no.	Material grade	Color	Length m	Operating temperature range °C
<b>PR-V3L-W-100M</b>	10-100EX	White	100	-20 to 60

Note: 1. Standard product.  
2. Dimensions is a nominal due to extruded product.

#### ■ V-6S Rails

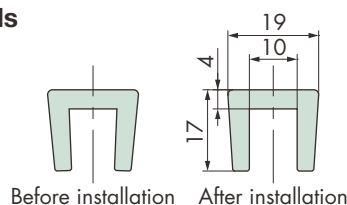


Tsubaki model no.	Material grade	Color	Length m	Operating temperature range °C
<b>PR-V6S-W-30M</b>	10-100EX	White	30	-20 to 60

Note: 1. Standard product.  
2. Dimensions is a nominal due to extruded product.

### V Rails

#### ■ V-10 Rails

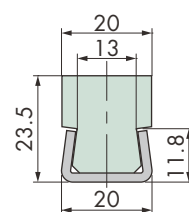


Tsubaki model no.	Material grade	Color	Length m	Operating temperature range °C
<b>PR-V10-W-50M</b>	10-100EX	White	50	-20 to 60

Note: 1. Standard product.  
2. Dimensions is a nominal due to extruded product.

### U Rails

#### ■ U-20 Rails

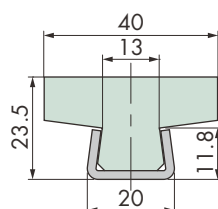


Tsubaki model no.	Material grade	Color	Material of Channel	Length m	Operating temperature range °C
PR-U20-W-15M	10-100EX	White	Stainless steel	1.5	-20 to 60
PR-U20-W-20M				2.0	
PR-U20-W-24M				2.4	

Note: 1. Made-to-order products.  
2. Dimensions are nominal due to extruded products.  
3. Electrostatic preventive (10-806) (color: black) and oil-impregnated (10-309) (color: green) types are also available.

### U Rails

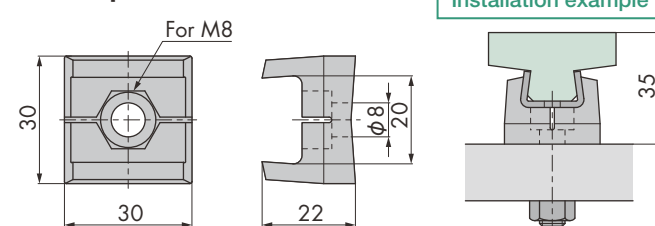
#### ■ U-40 Rails



Tsubaki model no.	Material grade	Color	Material of Channel	Length m	Operating temperature range °C
PR-U40-W-15M	10-100EX	White	Stainless steel	1.5	-20 to 60
PR-U40-W-20M				2.0	
PR-U40-W-24M				2.4	

Note: 1. Made-to-order products.  
2. Dimensions are nominal due to extruded products.  
3. Electrostatic preventive (10-806) (color: black) and oil-impregnated (10-309) (color: green) types are also available.

#### ■ Clamp for U Rail



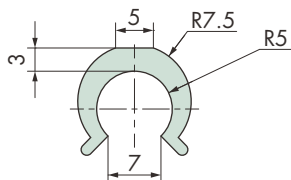
Tsubaki model no.	Material	Color
<b>PR-UK</b>	Polyacetal	Black

Note: 1. Made-to-order product.  
2. To install, tighten the M8 nut (bolt) to a torque of 9.8 to 14.7 N·m (1.0 to 1.5 kgf·m).  
3. Plastic guide rails and stainless steel channel may slip and change position due to creepage. At the upstream position of the conveyed product flow, fix the wear strip and channel together using knock-pins, etc.

## Extruded Rail

## R Rails

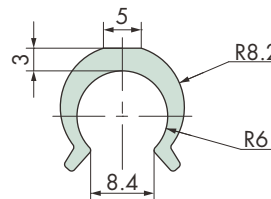
## ■ R-10 Rails



Tsubaki model no.	Material grade	Color	Length m	Applicable round bar	Operating temperature range °C
<b>PR-R10-W-3M</b>	10-100EX	White	3	φ 10	-20 to 60
PR-R10-B-3M	10-806EX	Black			

Note: 1. Tsubaki model no. in boldface is a standard product. Tsubaki model no. in normal face is a made-to-order product.  
2. Dimensions are nominal due to extruded products.

## ■ R-12 Rails

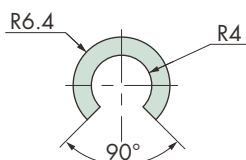


Tsubaki model no.	Material grade	Color	Length m	Applicable round bar	Operating temperature range °C
<b>PR-R12-W-3M</b>	10-100EX	White	3	φ 12	-20 to 60

Note: 1. Standard product.  
2. Dimensions is a nominal due to extruded product.

## C Rails

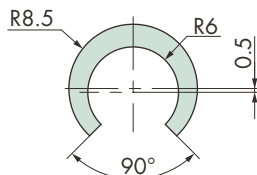
## ■ C-8 Rails



Tsubaki model no.	Material grade	Color	Length m	Applicable round bar	Operating temperature range °C
<b>PR-C8-W-3M</b>	10-100EX	White	3	φ 8	-20 to 60
PR-C8-B-3M	10-806EX	Black			

Note: 1. Tsubaki model no. in boldface is a standard product. Tsubaki model no. in normal face is a made-to-order product.  
2. Dimensions are nominal due to extruded products.

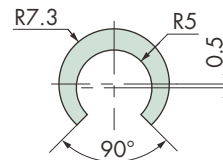
## ■ C-12 Rails



Tsubaki model no.	Material grade	Color	Length m	Applicable round bar	Operating temperature range °C
<b>PR-C12-W-3M</b>	10-100EX	White	3	φ 12	-20 to 60
PR-C12-B-3M	10-806EX	Black			

Note: 1. Tsubaki model no. in boldface is a standard product. Tsubaki model no. in normal face is a made-to-order product.  
2. Dimensions are nominal due to extruded products.

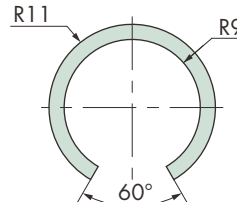
## ■ C-10 Rails



Tsubaki model no.	Material grade	Color	Length m	Applicable round bar	Operating temperature range °C
<b>PR-C10-W-3M</b>	10-100EX	White	3	φ 10	-20 to 60
PR-C10-B-3M	10-806EX	Black			

Note: 1. Tsubaki model no. in boldface is a standard product. Tsubaki model no. in normal face is a made-to-order product.  
2. Dimensions are nominal due to extruded products.

## ■ C-18 Rails

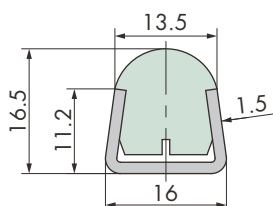


Tsubaki model no.	Material grade	Color	Length m	Applicable round bar	Operating temperature range °C
<b>PR-C18-W-3M</b>	10-100EX	White	3	φ 18	-20 to 60

Note: 1. Standard product.  
2. Dimensions is a nominal due to extruded product.

## D Rails

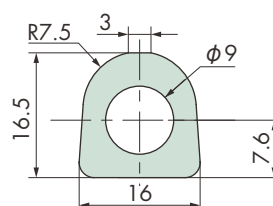
## ■ D Rails



Tsubaki model no.	Material grade	Color	Material of channel	Length m	Operating temperature range °C
<b>PR-D-W-2M</b>	10-100EX	White	Stainless steel	2	-20 to 60
<b>PR-D-B-2M</b>	10-806EX	Black			

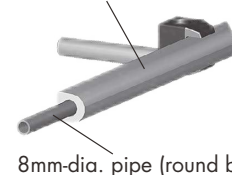
Note: 1. Standard products.  
2. Dimensions are nominal due to extruded products.

## ■ D101HB Rails



## Installation examples

D101HB rails



8mm-dia. pipe (round bar)

Tsubaki model no.	Material grade	Color	Length m	Operating temperature range °C
PR-D101HB-W-2M	10-100EX	White	2	-20 to 60

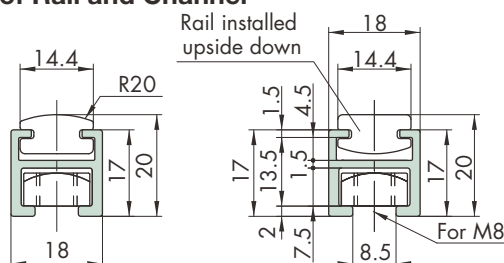
Note: 1. Made-to-order product.  
2. Dimensions is a nominal due to extruded product.  
3. Pipes (round bars) with an 8 mm diameter are not included.

# Plastic Rails

## Extruded Rail

### DR Rails

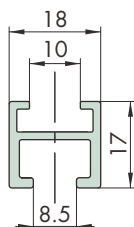
#### ■ Set of Rail and Channel



Tsubaki model no.	Material grade	Color	Length m	Operating temperature range °C
PR-DRP-W-3M	10-100EX	White	3	-20 to 60
PR-DRP-B-3M	10-806EX	Black	3	-20 to 60

Note: 1. Made-to-order products.  
2. Dimensions are nominal due to extruded products.

#### ■ Aluminum Channel for DR Rails

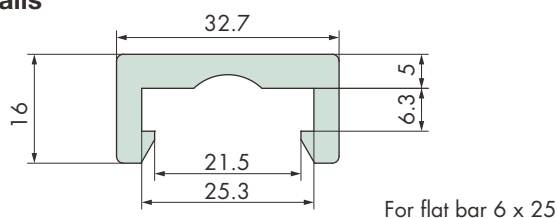


Tsubaki model no.	Material	Length m
PR-P-3M	Aluminum	3

Note: Made-to-order products.

### FA Rails

#### ■ FA Rails

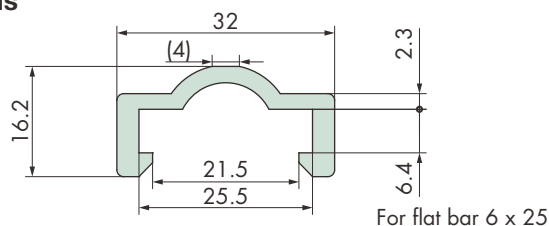


Tsubaki model no.	Material grade	Color	Length m	Operating temperature range °C
<b>PR-FA-W-3M</b>	10-100EX	White	3	-20 to 60
PR-FA-B-3M	10-806EX	Black		
<b>PR-FA-PLF-3M</b>	PLF Note: 3	White		

Note: 1. Tsubaki model no. in boldface are standard products. Tsubaki model no. in normal face is a made-to-order product.  
2. Dimensions are nominal due to extruded products.  
3. Available with standard length per unit only.

### A Rails

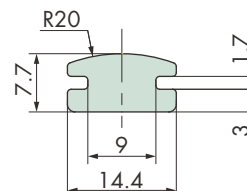
#### ■ A Rails



Tsubaki model no.	Material grade	Color	Length m	Operating temperature range °C
<b>PR-A-W-3M</b>	10-100EX	White	3	-20 to 60
PR-A-B-3M	10-806EX	Black		

Note: 1. Tsubaki model no. in boldface is a standard product. Tsubaki model no. in normal face is a made-to-order product.  
2. Dimensions are nominal due to extruded products.

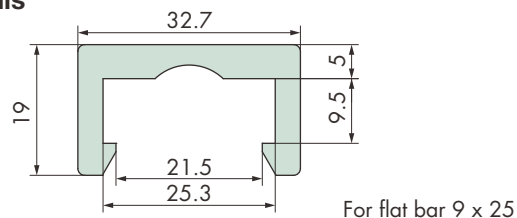
#### ■ Plastic Rails for DR



Tsubaki model no.	Material grade	Color	Length m	Operating temperature range °C
PR-DR-W-3M	10-100EX	White	3	-20 to 60
PR-DR-B-3M	10-806EX	Black		

Note: 1. Made-to-order products.  
2. Dimensions are nominal due to extruded products.

#### ■ FA-2 Rails

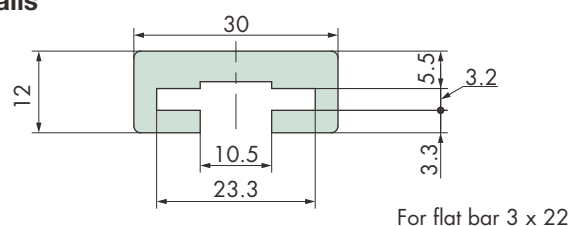


Tsubaki model no.	Material grade	Color	Length m	Operating temperature range °C
<b>PR-FA2-W-3M</b>	10-100EX	White	3	-20 to 60

Note: 1. Standard product.  
2. Dimensions is a nominal due to extruded product.

### K Rails

#### ■ K Rails



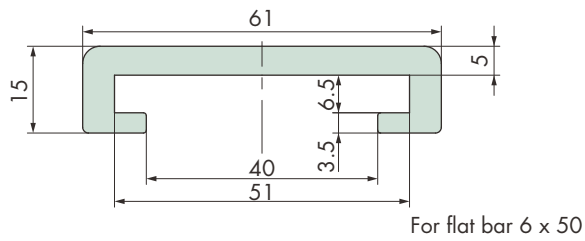
Tsubaki model no.	Material grade	Color	Length m	Operating temperature range °C
<b>PR-K-W-3M</b>	10-100EX	White	3	-20 to 60
<b>PR-K-B-3M</b>	10-806EX	Black		
<b>PR-K-PLF-3M</b>	PLF Note: 3	White		

Note: 1. Standard products.  
2. Dimensions are nominal due to extruded products.  
3. Available with standard length per unit only.

## Extruded Rail

## C650 Rails

## ■ C650 Rails



Tsubaki model no.	Material grade	Color	Length m	Operating temperature range °C
<b>PR-C650-W-2M</b>	10-100EX	White	2	-20 to 60
PR-C650-W-3M			3	
PR-C650-W-4M			4	
PR-C650-B-2M	10-806EX	Black	2	
<b>PR-C650-PLF-2M</b>	PLF Note: 3	White	2	
PR-C650-PLF-3M			3	
<b>PR-C650-PLF-4M</b>			4	

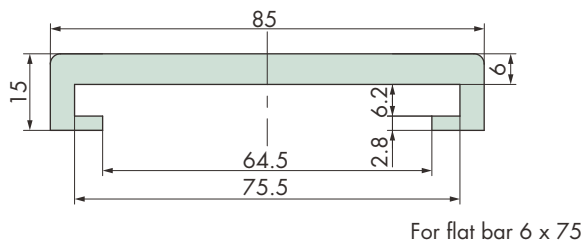
Note: 1. Tsubaki model no. in boldface are standard products. Tsubaki model no. in normal face are made-to-order products.

2. Dimensions are nominal due to extruded products.

3. Available with standard length per unit only.

## C675 Rails

## ■ C675 Rails



Tsubaki model no.	Material grade	Color	Length m	Operating temperature range °C
<b>PR-C675-W-2M</b>	10-100EX	White	2	-20 to 60
PR-C675-W-4M			4	
<b>PR-C675-PLF-2M</b>	PLF <small>Note: 3</small>		2	
PR-C675-PLF-3M			3	
PR-C675-PLF-4M			4	

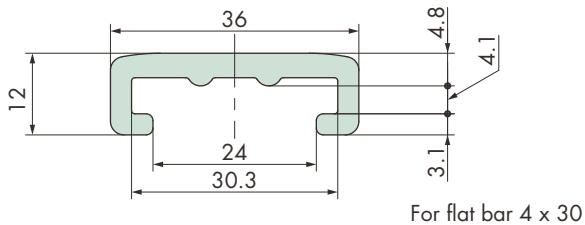
Note: 1. Tsubaki model no. in boldface are standard products. Tsubaki model no. in normal face are made-to-order products.

2. Dimensions are nominal due to extruded products.

3. Available with standard length per unit only.

## GR4301 Rails

## ■ GR4301 Rails



Tsubaki model no.	Material grade	Color	Length m	Operating temperature range °C
PR-GR4301-W-3M	10-100EX	White	3	-20 to 60

Note: 1. Made-to-order product.

2. Dimensions is a nominal due to extruded product.

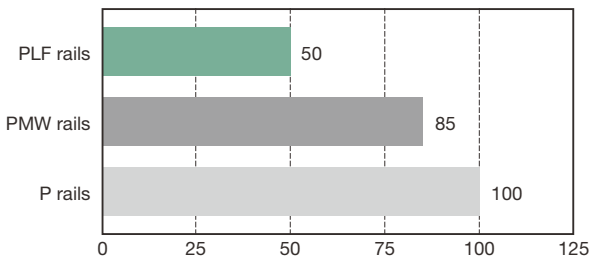
# Plastic Rails

## Standard Rail

### ■ PH Rails: Low Friction/Wear Resistant (PLF)

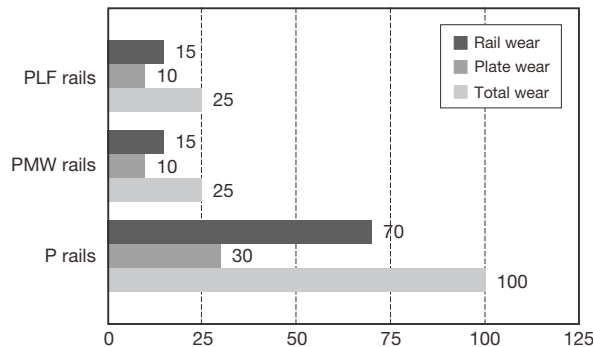
- Can reduce the coefficient of dynamic friction compared to traditional plastic rails.  
(in-house tests) 10 – 40% lower than PMW rails,  
30 – 50% lower than P rails.

Comparison of dynamic coefficient of friction after 500 hours operation



- Suppresses the generation of wear debris in dry conditions.

Comparison of wear after 500 hours operation

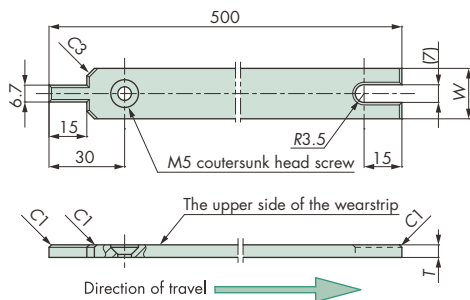


- We use materials that comply with the Food Sanitation Act (Japan's Ministry of Health Notification No. 370).

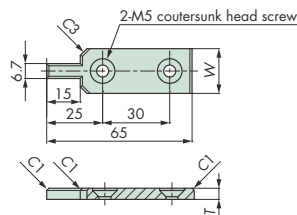
[Coefficient of dynamic friction and wear under in-house test conditions]

Chain: TTP826-LFB, Chain speed: 60m/min, Condition: Dry, ambient temperature (with P rails as 100) \*Live load: 10 kg (wear comparison graph)

#### Rails



#### End plate



End plates are used as an anti-vibration brace on the very last section of the PH rail.

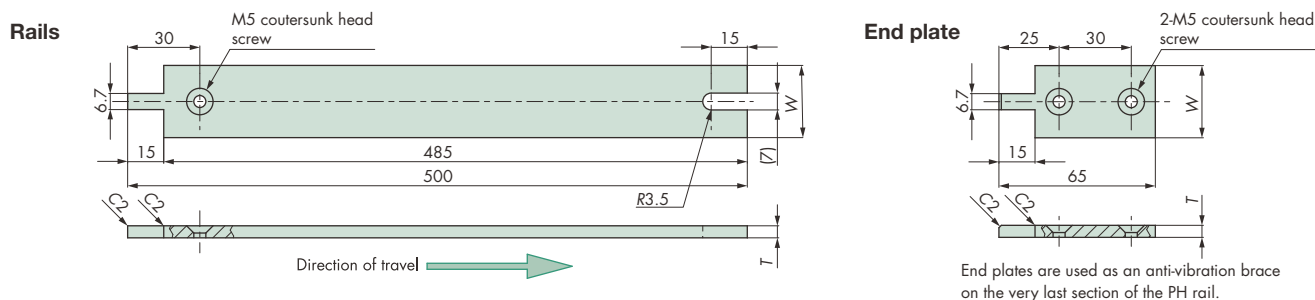
Rail width W	Material grade	Color	Rail thickness <i>T</i>				Operating temperature range °C
			3		5		
			Rail	End plate	Rail	End plate	
			Tsubaki model no.	Tsubaki model no.	Tsubaki model no.	Tsubaki model no.	
20	PLF	White	PR-PH320-PLF	PR-PH320E-PLF	<b>PR-PH520-PLF</b>	<b>PR-PH520E-PLF</b>	-20 to 60
30					PR-PH530-PLF	PR-PH530E-PLF	
40			PR-PH340-PLF	PR-PH340E-PLF	PR-PH540-PLF	PR-PH540E-PLF	

Note: 1. Tsubaki model no. in boldface are standard products. Tsubaki model no. in normal face are made-to-order products.  
2. When replacing from PR rail, which is made of low friction and wear resistant PMW, a countersunk size will be M4 for a 3 mm thick rail.  
3. Sizes other than those shown above are also available upon request. Contact a Tsubaki representative for more information.



## Standard Rail

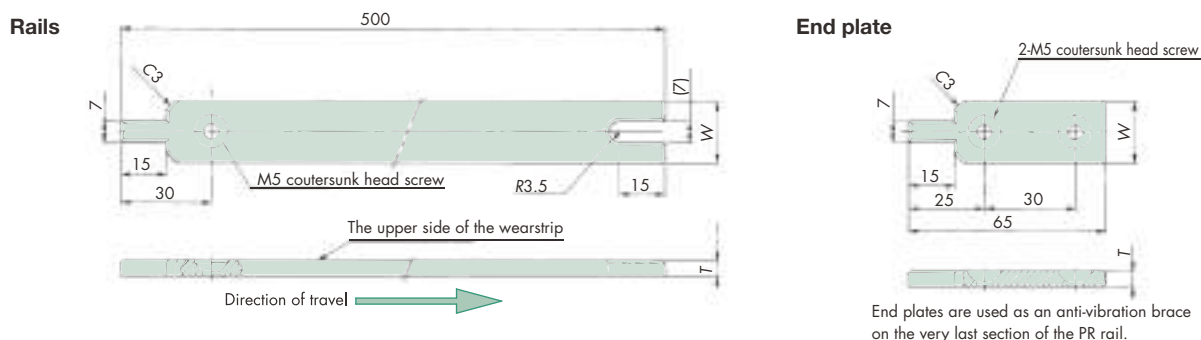
### PH Rails: Standard



Rail width W	Material grade	Color	Rail thickness <i>T</i>						Operating temperature range °C
			3		5		6		
			Rail	End plate	Rail	End plate	Rail	End plate	
			Tsubaki model no.	Tsubaki model no.	Tsubaki model no.	Tsubaki model no.	Tsubaki model no.	Tsubaki model no.	
10	10-100	White			PR-PH510-W	PR-PH510E-W			-20 to 60
	10-301	Green			PR-PH510-G	PR-PH510E-G			
11	10-100	White					PR-PH611-W	PR-PH611E-W	
	10-301	Green					PR-PH611-G	PR-PH611E-G	
12	10-100	White			PR-PH512-W	PR-PH512E-W			
	10-301	Green			PR-PH512-G	PR-PH512E-G			
14	10-100	White					PR-PH614-W	PR-PH614E-W	
	10-301	Green					PR-PH614-G	PR-PH614E-G	
15	10-100	White			PR-PH515-W	PR-PH515E-W	PR-PH615-W	PR-PH615E-W	
	10-301	Green			PR-PH515-G	PR-PH515E-G	PR-PH615-G	PR-PH615E-G	
16	10-100	White					PR-PH616-W	PR-PH616E-W	
	10-301	Green					PR-PH616-G	PR-PH616E-G	
19	10-100	White					PR-PH619-W	PR-PH619E-W	
	10-301	Green					PR-PH619-G	PR-PH619E-G	
20	10-100	White	PR-PH320-W	PR-PH320E-W	PR-PH520-W	PR-PH520E-W	PR-PH620-W	PR-PH620E-W	
	10-301	Green	PR-PH320-G	PR-PH320E-G	PR-PH520-G	PR-PH520E-G	PR-PH620-G	PR-PH620E-G	
25	10-100	White			PR-PH525-W	PR-PH525E-W	PR-PH625-W	PR-PH625E-W	
	10-301	Green			PR-PH525-G	PR-PH525E-G	PR-PH625-G	PR-PH625E-G	
30	10-100	White			PR-PH530-W	PR-PH530E-W	PR-PH630-W	PR-PH630E-W	
	10-301	Green			PR-PH530-G	PR-PH530E-G	PR-PH630-G	PR-PH630E-G	
35	10-100	White	PR-PH335-W	PR-PH335E-W	PR-PH535-W	PR-PH535E-W	PR-PH635-W	PR-PH635E-W	
	10-301	Green	PR-PH335-G	PR-PH335E-G	PR-PH535-G	PR-PH535E-G	PR-PH635-G	PR-PH635E-G	
40	10-100	White	PR-PH340-W	PR-PH340E-W	PR-PH540-W	PR-PH540E-W	PR-PH640-W	PR-PH640E-W	
	10-301	Green	PR-PH340-G	PR-PH340E-G	PR-PH540-G	PR-PH540E-G	PR-PH640-G	PR-PH640E-G	
50	10-100	White			PR-PH550-W	PR-PH550E-W	PR-PH650-W	PR-PH650E-W	
	10-301	Green			PR-PH550-G	PR-PH550E-G	PR-PH650-G	PR-PH650E-G	
55	10-100	White			PR-PH555-W	PR-PH555E-W			
	10-301	Green			PR-PH555-G	PR-PH555E-G			
75	10-100	White			PR-PH575-W	PR-PH575E-W			
	10-301	Green			PR-PH575-G	PR-PH575E-G			

Note: 1. Tsubaki model no. in boldface are standard products. Tsubaki model no. in normal face are made-to-order products.  
2. Sizes other than those shown above are also available upon request. Contact a Tsubaki representative for more information.

### PR and PRE Rails (PMW and M)



Rail width W	Material grade	Color	Rail thickness T		Operating temperature range °C	Screw for countersunk section
			5	End plate		
			Rail Tsubaki model no.	End plate Tsubaki model no.		
20	PMW	White	PR520-PMW	PRE520-PMW	-20 to 60	M5 flathead screw
	M Note: 3	Blue	PR520-M	PRE520-M	-20 to 80	

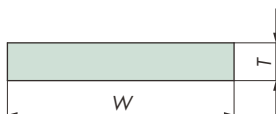
Note: 1. Made-to-order products.  
2. Material grade: M is designed to be used only for dry condition.  
3. PH rail which is made of PMW grade has a notch on the convex portion to differentiate it from PH rail made of other material grade.  
4. A countersunk size of M4 is required for a 3 mm thick rail.



# Plastic Rails

## Standard Rail

### ■ Flat Rails



Rail width W	Material grade	Color	Rail thickness T				Operating temperature range °C
			3	4	5	6	
15	10-100	White	PR-FR3-15-W-50M	PR-FR4-15-W-40M	PR-FR5-15-W-30M	PR-FR6-15-W-25M	-20 to 60
	10-301	Green	PR-FR3-15-G-50M	PR-FR4-15-G-40M	PR-FR5-15-G-30M	PR-FR6-15-G-25M	
20	10-100	White	<b>PR-FR3-20-W-50M</b>		<b>PR-FR5-20-W-30M</b>	<b>PR-FR6-20-W-25M</b>	
	10-301	Green	<b>PR-FR3-20-G-50M</b>		<b>PR-FR5-20-G-30M</b>	<b>PR-FR6-20-G-25M</b>	
25	10-100	White	<b>PR-FR3-25-W-50M</b>	PR-FR4-25-W-40M	<b>PR-FR5-25-W-30M</b>	<b>PR-FR6-25-W-25M</b>	
	10-301	Green	<b>PR-FR3-25-G-50M</b>	PR-FR4-25-G-40M	<b>PR-FR5-25-G-30M</b>	<b>PR-FR6-25-G-25M</b>	
30	10-100	White	<b>PR-FR3-30-W-50M</b>	PR-FR4-30-W-40M	<b>PR-FR5-30-W-30M</b>	<b>PR-FR6-30-W-25M</b>	
	10-301	Green	<b>PR-FR3-30-G-50M</b>	PR-FR4-30-G-40M	<b>PR-FR5-30-G-30M</b>	<b>PR-FR6-30-G-25M</b>	
35	10-100	White	PR-FR3-35-W-50M	PR-FR4-35-W-40M	PR-FR5-35-W-30M	PR-FR6-35-W-25M	
	10-301	Green	PR-FR3-35-G-50M	PR-FR4-35-G-40M	PR-FR5-35-G-30M	PR-FR6-35-G-25M	
40	10-100	White	PR-FR3-40-W-50M	PR-FR4-40-W-40M	PR-FR5-40-W-30M	PR-FR6-40-W-25M	
	10-301	Green	PR-FR3-40-G-50M	PR-FR4-40-G-40M	PR-FR5-40-G-30M	PR-FR6-40-G-25M	
45	10-100	White	PR-FR3-45-W-50M		PR-FR5-45-W-30M	PR-FR6-45-W-25M	
	10-301	Green	PR-FR3-45-G-50M		PR-FR5-45-G-30M	PR-FR6-45-G-25M	
50	10-100	White	PR-FR3-50-W-50M	PR-FR4-50-W-40M	PR-FR5-50-W-30M	PR-FR6-50-W-25M	
	10-301	Green	PR-FR3-50-G-50M	PR-FR4-50-G-40M	PR-FR5-50-G-30M	PR-FR6-50-G-25M	
55	10-100	White	PR-FR3-55-W-50M		PR-FR5-55-W-30M		
	10-301	Green	PR-FR3-55-G-50M		PR-FR5-55-G-30M		
60	10-100	White	PR-FR3-60-W-50M		PR-FR5-60-W-30M	PR-FR6-60-W-25M	
	10-301	Green	PR-FR3-60-G-50M		PR-FR5-60-G-30M	PR-FR6-60-G-25M	
Coil length m			50	40	30	25	

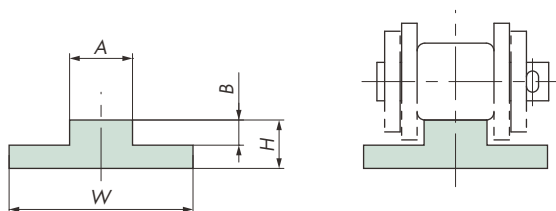
Note: 1. Tsubaki model no. in boldface are standard products. Tsubaki model no. in normal face are made-to-order products.

2. Sizes other than those shown above are also available upon request. Contact a Tsubaki representative for more information.

## Wearstrip

## Wearstrip for RS Roller Chains

## ■ SR Rails

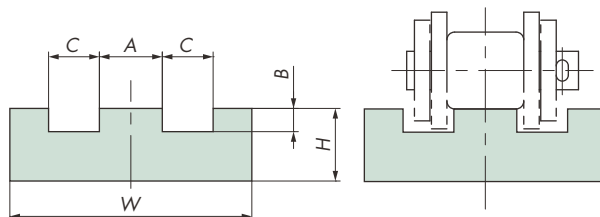


Plastic rail type	Tsubaki model no.	Applicable chain type	Dimensions				Material grade	Color	Length m	Operating temperature range °C		
			W	H	A	B						
SR-1	PR-SR1-B-2M	RS40 / RF2040S	25	8	6.6	2.5	10-801	Black	2	-20 to 60		
SR-140	PR-SR140-B-2M	RS40 / RF2040S	40		8.0	3.5						
SR-2	PR-SR2-B-2M	RS50 / RF2050S	32								11.0	3.8
SR-3	PR-SR3-B-2M	RS60 / RF2060S										
SR-4	PR-SR4-B-2M	RS80 / RF2080S	38	10	13.0	5.2						

Note: 1. Made-to-order products.

2. PLF can also be manufactured. Contact a Tsubaki representative for more information.

## ■ SSR Rails

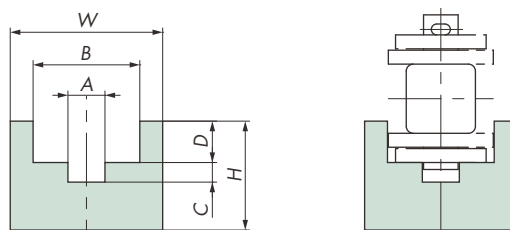


Plastic rail type	Tsubaki model no.	Applicable chain type	Dimensions					Material grade	Color	Length m	Operating temperature range °C
			W	H	A	B	C				
SSR-1	PR-SSR1-B-2M	RS40 / RF2040S	25	8	6.6	2.0	4.7	10-801	Black	2	-20 to 60
SSR-2	PR-SSR2-B-2M	RS50 / RF2050S	32	10	8.0	3.0	6.0				
SSR-3	PR-SSR3-B-2M	RS60 / RF2060S	38	15	11.0	3.5	8.4				
SSR-4	PR-SSR4-B-2M	RS80 / RF2080S	50	15	13.0	4.8	10.5				

Note: 1. Made-to-order products.

2. PLF can also be manufactured. Contact a Tsubaki representative for more information.

## ■ Straight Rails – Type A (Solid)



Tsubaki model no.	Applicable chain type	Dimensions						Material grade	Color	Length m	Operating temperature range °C
		H	W	A	B	C	D				
PR-A2040-W-2M	RS40 / RF2040S	15	25	4.5	12.8	4.0	4.5	10-100	White	2	-20 to 60
PR-A2040-G-2M								10-301	Green		
PR-AJIS50-W-2M	RS50 / RF2050S	15	25	5.6	15.7	4.0	5.5	10-100	White		
PR-AJIS50-G-2M								10-301	Green		
PR-AJIS60-W-2M	RS60	20	30	6.5	18.5	4.0	6.3	10-100	White		
PR-AJIS60-G-2M								10-301	Green		
PR-A2060-W-2M	RF2060S	20	30	6.5	18.5	4.0	7.9	10-100	White		
PR-A2060-G-2M								10-301	Green		
PR-AJIS80-W-2M	RS80	25	35	8.5	24.5	4.5	7.9	10-100	White		
PR-AJIS80-G-2M								10-301	Green		
PR-A2080-W-2M	RF2080S	25	35	8.5	24.5	4.5	9.5	10-100	White		
PR-A2080-G-2M								10-301	Green		

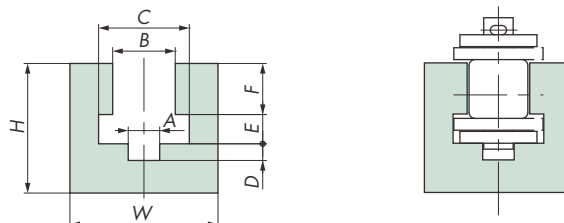
Note: Made-to-order products.

# Plastic Rails

## Wearstrip

### Wearstrip for RS Roller Chains

#### ■ Straight Rails—Type B (Split)

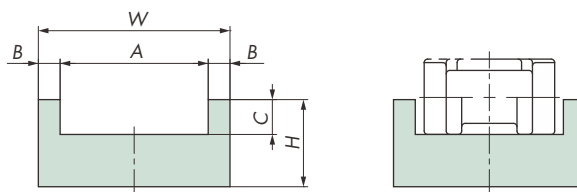


Tsubaki model no.	Applicable chain type	Dimensions								Material grade	Color	Length m	Operating temperature range °C
		H	W	A	B	C	D	E	F				
PR-B2040-W-2M	RS40 / RF2040S	25	30	4.5	9.0	12.8	4.0	4.5	5.8	10-100	White	2	-20 to 60
PR-B2040-G-2M										10-301	Green		
PR-B2050-W-2M	RS50 / RF2050S	25	30	5.6	11.1	15.7	4.0	5.5	7.2	10-100	White		
PR-B2050-G-2M										10-301	Green		
PR-BJIS60-W-2M	RS60	30	35	6.5	13.0	18.5	4.0	6.3	10.4	10-100	White		
PR-BJIS60-G-2M										10-301	Green		
PR-B2060-W-2M	RF2060S	30	35	6.5	13.0	18.5	4.0	7.9	10.4	10-100	White		
PR-B2060-G-2M										10-301	Green		
PR-BJIS80-W-2M	RS80	35	40	8.5	16.9	24.5	4.5	7.9	13.8	10-100	White		
PR-BJIS80-G-2M										10-301	Green		
PR-B2080-W-2M	RF2080S	35	40	8.5	16.9	24.5	4.5	9.5	13.8	10-100	White		
PR-B2080-G-2M										10-301	Green		

Note: Made-to-order products.

### Wearstrip for Plastic Block Chains

#### ■ Plastic Rails for RSP and RSP80



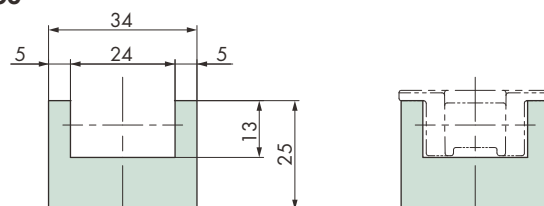
Tsubaki model no.	Applicable chain type	Dimensions					Material grade <sup>Note 2</sup>	Color	Length m	Operating temperature range °C
		W	H	A	B	C				
<b>PR-PO6-W-2M</b>	RSP35	27	10	17	5	4	10-100	White	2	-20 to 60
<b>PR-PO6-G-2M</b>							10-301	Green		
<b>PR-PO8-W-2M</b>	RSP40	33	15	23	5	5	10-100	White		
<b>PR-PO8-G-2M</b>							10-301	Green		
PR-PO10-W-2M	RSP50	36	20	26	5	7	10-100	White		
PR-PO10-G-2M							10-301	Green		
<b>PR-PO12-W-2M</b>	RSP40-T-CU/RSP60	44	20	34	5	8	10-100	White		
<b>PR-PO12-G-2M</b>							10-301	Green		
PR-RSP80-W-2M	RSP80	53	20	43	5	8	10-100	White		
PR-RSP80-G-2M							10-301	Green		

Note: 1. Tsubaki model no. in boldface are standard products. Tsubaki model no. in normal face are made-to-order products.

2. Sizes other than those shown above are also available upon request. Contact a Tsubaki representative for more information.

3. PLF can also be manufactured. Contact a Tsubaki representative for more information.

#### ■ Plastic Rails for RSP50-SL350



Tsubaki model no.	Applicable chain type	Material grade <sup>Note 4</sup>	Color	Length m	Operating temperature range °C
PR-RSP50-SL350-W-2M	RSP50-SL350	10-100	White	2	-20 to 60
PR-RSP50-SL350-G-2M		10-301	Green		

Note: 1. Made-to-order products.

2. Sizes other than those shown above are also available upon request. Contact a Tsubaki representative for more information.

3. Plastic rail for plastic block chain [PR-PO10-W(G)-2M] can be used for single strand chains.

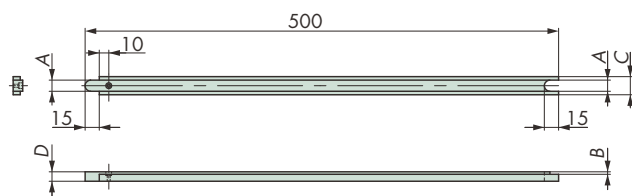
4. PLF can also be manufactured. Contact a Tsubaki representative for more information.

## Wearstrip

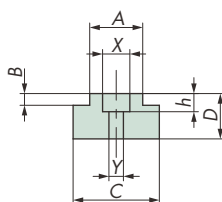
### Wearstrip for Plastic Roller Table (ST and RT)

#### ■ For 1 Strand of Plastic Roller Table

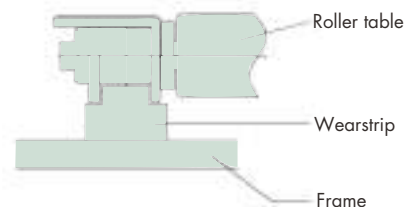
##### PR-ST(RT) rails



Mounting screw hole diagram



#### Installation examples



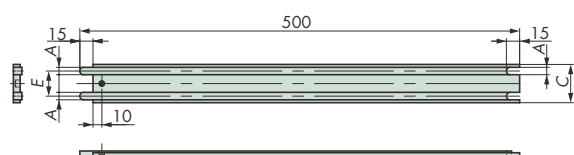
Tsubaki model no.	Applicable chain type	Dimensions				Mounting screws	X:Depth h	Y	Material grade	Color	Operating temperature range °C
		A	B	C	D						
PR-ST300-P	ST300	4.0	2.7	9.5	10.0	M1.6 pan-head screw	φ 3.2×3	φ 1.8	P	White	-20 to 60
PR-RT300-P	RT300		1.6								
PR-ST400-P	ST400	7.0	3.1	12.0		M2 pan-head screw	φ 4.0×4	φ 2.2			
PR-RT400-P	RT400		1.7								
PR-ST500-P	ST500	8.5	3.5	15.0		M3 pan-head screw	φ 6.0×4	φ 3.2			
PR-RT500-P	RT500		2.0								
PR-RT600-P	RT600	11.7	2.6	19.0							

Note: 1. Made-to-order products.

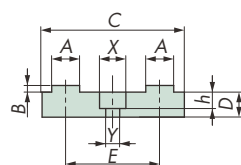
2. Shape, material or color other than shown above may be available. Contact a Tsubaki representative for more information.

#### ■ For 2 Strands of Plastic Roller Tables

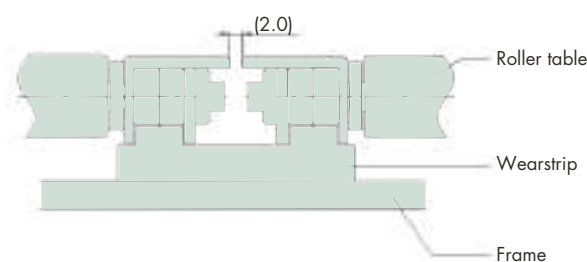
##### PR-ST-2 rails



Mounting screw hole diagram



#### Installation examples



Tsubaki model no.	Applicable chain type	Dimensions					Mounting screws	X:Depth h	Y	Material grade	Color	Operating temperature range °C
		A	B	C	D	E						
PR-ST300-P-2	ST300	4.0	2.7	26.0	10	16.5	M4 pan-head screw	$\phi 8 \times 5$	$\phi 4.2$	P	White	-20 to 60
PR-ST400-P-2	ST400	7.0	3.1	36.5		24.5						
PR-ST500-P-2	ST500	8.5	3.5	43.5		28.5						

Note: 1. Made-to-order products.

2. Shape, material or color other than shown above may be available. Contact a Tsubaki representative for more information.

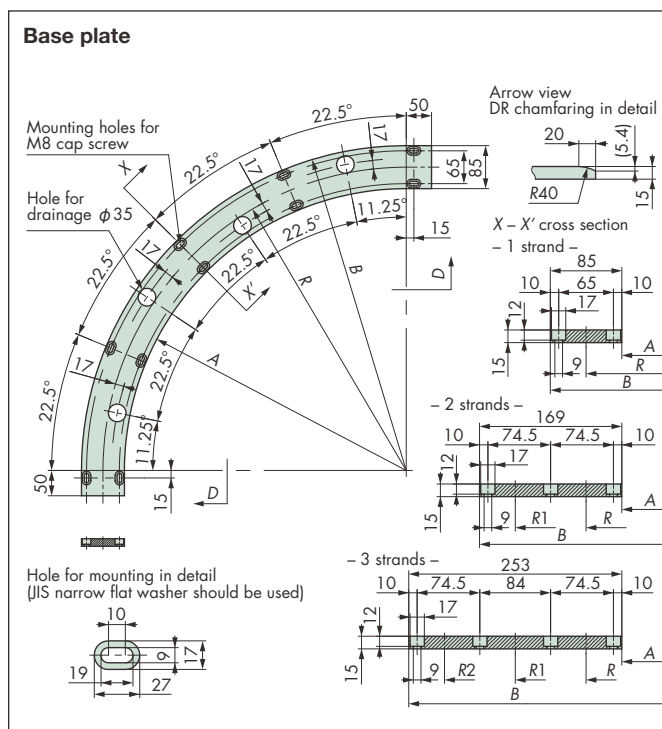
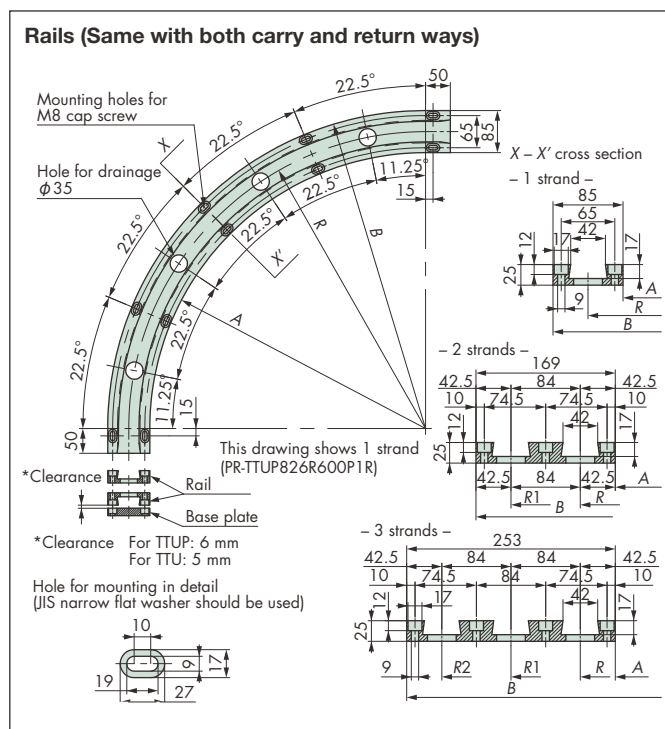
# Plastic Rails

## Finished Rail

### Curved Plastic Rail

#### ■ Curved Plastic Rails for TTUP826

Applicable Chain TTUP826, TTUPH826, TTUP826P, TTU826-N (Cannot be used with TTUP-M and TTUP-LLPC)



Material grade	Color	Operating temperature range °C
P Note	White	-20 to 60

Note: Models dedicated to for only dry conditions (M) as well as low friction/wear resistant (PMW, PLF) can also be manufactured.

No. of strands	Tsubaki model no. set	Tsubaki model no. carry-way/return-way rail	Tsubaki model no. return-way/base plate	R Note: 2	R1 Note: 2	R2 Note: 2	A	B
1	PR-TTUP826R600P1S	PR-TTUP826R600P1R	PR-TTUP826R600P1B	R600	-	-	R557.5	R642.5
	PR-TTUP826R700P1S	PR-TTUP826R700P1R	PR-TTUP826R700P1B	R700	-	-	R657.5	R742.5
	PR-TTUP826R800P1S	PR-TTUP826R800P1R	PR-TTUP826R800P1B	R800	-	-	R757.5	R842.5
	PR-TTUP826R900P1S	PR-TTUP826R900P1R	PR-TTUP826R900P1B	R900	-	-	R857.5	R942.5
	PR-TTUP826R1000P1S	PR-TTUP826R1000P1R	PR-TTUP826R1000P1B	R1000	-	-	R957.5	R1042.5
2	PR-TTUP826R600P2S	PR-TTUP826R600P2R	PR-TTUP826R600P2B	R600	R684	-	R557.5	R726.5
	PR-TTUP826R700P2S	PR-TTUP826R700P2R	PR-TTUP826R700P2B	R700	R784	-	R657.5	R826.5
	PR-TTUP826R800P2S	PR-TTUP826R800P2R	PR-TTUP826R800P2B	R800	R884	-	R757.5	R926.5
	PR-TTUP826R900P2S	PR-TTUP826R900P2R	PR-TTUP826R900P2B	R900	R984	-	R857.5	R1026.5
	PR-TTUP826R1000P2S	PR-TTUP826R1000P2R	PR-TTUP826R1000P2B	R1000	R1084	-	R957.5	R1126.5
3	PR-TTUP826R600P3S	PR-TTUP826R600P3R	PR-TTUP826R600P3B	R600	R684	R768	R557.5	R810.5
	PR-TTUP826R700P3S	PR-TTUP826R700P3R	PR-TTUP826R700P3B	R700	R784	R868	R657.5	R910.5
	PR-TTUP826R800P3S	PR-TTUP826R800P3R	PR-TTUP826R800P3B	R800	R884	R968	R757.5	R1010.5
	PR-TTUP826R900P3S	PR-TTUP826R900P3R	PR-TTUP826R900P3B	R900	R984	R1068	R857.5	R1110.5
	PR-TTUP826R1000P3S	PR-TTUP826R1000P3R	PR-TTUP826R1000P3B	R1000	R1084	R1168	R957.5	R1210.5

Note: 1. Made-to-order products.

2. R: sideflex radius of the first strand, R1: sideflex radius of the second strand, R2: sideflex radius of the third strand.

3. Set: Combination of two curved plastic rails and one base plate.

4. Failure may result if curved plastic rails with an angle of 180° or larger are used under unlubricated condition.

5. Contact a Tsubaki representative if you're considering the use of curved plastic rails with other sideflex radius, number of strands and material shown above.

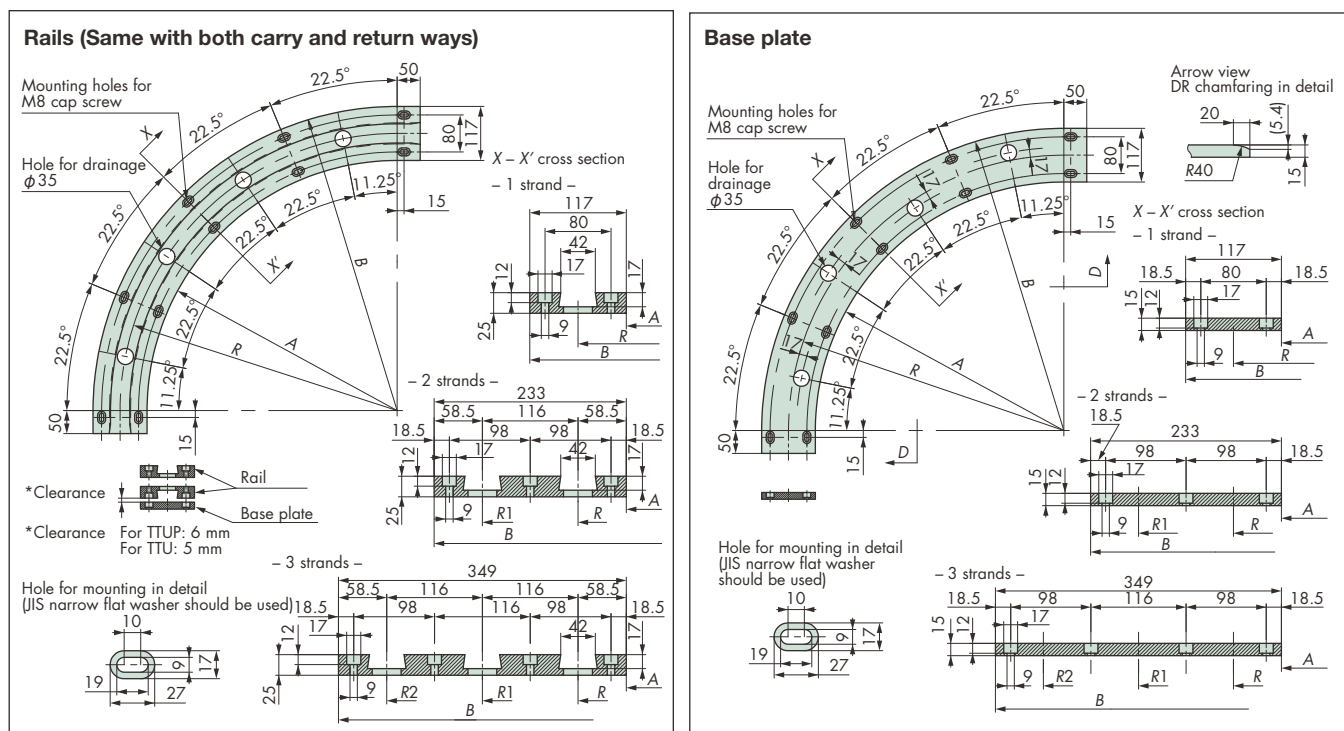
6. The dimension for mounting has changed to the dimension for JIS small plain washer, as of April, 2020.

## Finished Rail

## Curved Plastic Rail

## ■ Curved Plastic Rails for TTUP1143

Applicable Chain TTUP1143, TTUP1143P, TTU1143-N



Material grade	Color	Operating temperature °C
P Note	White	-20 to 60

Note: Models dedicated to for only dry conditions (M) as well as low friction/wear resistant (PMW, PLF) can also be manufactured.

No. of strands	Tsubaki model no. set	Tsubaki model no. carry-way/return-way rail	Tsubaki model no. return-way/base plate	R Note: 2	R1 Note: 2	R2 Note: 2	A	B
1	PR-TTUP1143R600P1S	PR-TTUP1143R600P1R	PR-TTUP1143R600P1B	R600	-	-	R541.5	R658.5
	PR-TTUP1143R700P1S	PR-TTUP1143R700P1R	PR-TTUP1143R700P1B	R700	-	-	R641.5	R758.5
	PR-TTUP1143R800P1S	PR-TTUP1143R800P1R	PR-TTUP1143R800P1B	R800	-	-	R741.5	R858.5
	PR-TTUP1143R900P1S	PR-TTUP1143R900P1R	PR-TTUP1143R900P1B	R900	-	-	R841.5	R958.5
	PR-TTUP1143R1000P1S	PR-TTUP1143R1000P1R	PR-TTUP1143R1000P1B	R1000	-	-	R941.5	R1058.5
2	PR-TTUP1143R600P2S	PR-TTUP1143R600P2R	PR-TTUP1143R600P2B	R600	R716	-	R541.5	R774.5
	PR-TTUP1143R700P2S	PR-TTUP1143R700P2R	PR-TTUP1143R700P2B	R700	R816	-	R641.5	R874.5
	PR-TTUP1143R800P2S	PR-TTUP1143R800P2R	PR-TTUP1143R800P2B	R800	R916	-	R741.5	R974.5
	PR-TTUP1143R900P2S	PR-TTUP1143R900P2R	PR-TTUP1143R900P2B	R900	R1016	-	R841.5	R1074.5
	PR-TTUP1143R1000P2S	PR-TTUP1143R1000P2R	PR-TTUP1143R1000P2B	R1000	R1116	-	R941.5	R1174.5
3	PR-TTUP1143R600P3S	PR-TTUP1143R600P3R	PR-TTUP1143R600P3B	R600	R716	R832	R541.5	R890.5
	PR-TTUP1143R700P3S	PR-TTUP1143R700P3R	PR-TTUP1143R700P3B	R700	R816	R932	R641.5	R990.5
	PR-TTUP1143R800P3S	PR-TTUP1143R800P3R	PR-TTUP1143R800P3B	R800	R916	R1032	R741.5	R1090.5
	PR-TTUP1143R900P3S	PR-TTUP1143R900P3R	PR-TTUP1143R900P3B	R900	R1016	R1132	R841.5	R1190.5
	PR-TTUP1143R1000P3S	PR-TTUP1143R1000P3R	PR-TTUP1143R1000P3B	R1000	R1116	R1232	R941.5	R1290.5

Note: 1. Made-to-order products.

2. R: sideflex radius of the first strand, R1: sideflex radius of the second strand, R2: sideflex radius of the third strand.

3. Set: Combination of two curved plastic rails and one base plate.

4. Failure may result if curved plastic rails with an angle of 180° or larger are used under unlubricated condition.

5. Contact a Tsubaki representative if you're considering the use of curved plastic rails with other sideflex radius, number of strands and material shown above.

6. The dimension for mounting has changed to the dimension for JIS small plain washer, as of April, 2020.

# Plastic Rails

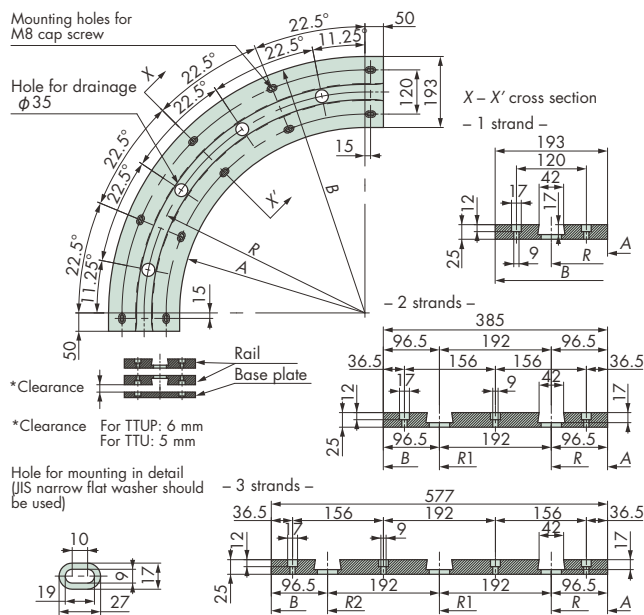
## Finished Rail

### Curved Plastic Rail

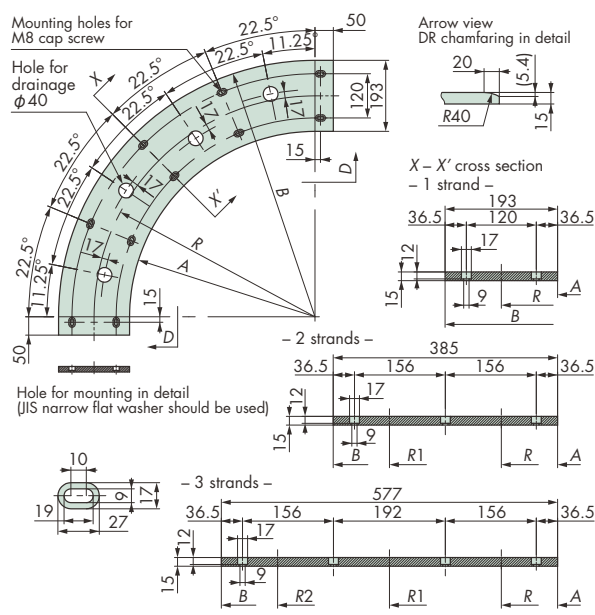
#### Curved Plastic Rails for TTUP1905

Applicable Chain TTUP1905, TTU1905-N

##### Rails (Same with both carry and return ways)



##### Base plate



Material grade	Color	Operating temperature range °C
p Note	White	-20 to 60

Note: Models dedicated to for only dry conditions (M) as well as low friction/wear resistant (PMW, PLF) can also be manufactured.

No. of strands	Tsubaki model no. set	Tsubaki model no. carry-way/return-way rail	Tsubaki model no. return-way/base plate	R Note: 2	R1 Note: 2	R2 Note: 2	A	B
1	PR-TTUP1905R600P1S	PR-TTUP1905R600P1R	PR-TTUP1905R600P1B	R600	-	-	R503.5	R696.5
	PR-TTUP1905R700P1S	PR-TTUP1905R700P1R	PR-TTUP1905R700P1B	R700	-	-	R603.5	R796.5
	PR-TTUP1905R800P1S	PR-TTUP1905R800P1R	PR-TTUP1905R800P1B	R800	-	-	R703.5	R896.5
	PR-TTUP1905R900P1S	PR-TTUP1905R900P1R	PR-TTUP1905R900P1B	R900	-	-	R803.5	R996.5
	PR-TTUP1905R1000P1S	PR-TTUP1905R1000P1R	PR-TTUP1905R1000P1B	R1000	-	-	R903.5	R1096.5
2	PR-TTUP1905R600P2S	PR-TTUP1905R600P2R	PR-TTUP1905R600P2B	R600	R792	-	R503.5	R888.5
	PR-TTUP1905R700P2S	PR-TTUP1905R700P2R	PR-TTUP1905R700P2B	R700	R892	-	R603.5	R988.5
	PR-TTUP1905R800P2S	PR-TTUP1905R800P2R	PR-TTUP1905R800P2B	R800	R992	-	R703.5	R1088.5
	PR-TTUP1905R900P2S	PR-TTUP1905R900P2R	PR-TTUP1905R900P2B	R900	R1092	-	R803.5	R1188.5
	PR-TTUP1905R1000P2S	PR-TTUP1905R1000P2R	PR-TTUP1905R1000P2B	R1000	R1192	-	R903.5	R1288.5
3	PR-TTUP1905R600P3S	PR-TTUP1905R600P3R	PR-TTUP1905R600P3B	R600	R792	R984	R503.5	R1080.5
	PR-TTUP1905R700P3S	PR-TTUP1905R700P3R	PR-TTUP1905R700P3B	R700	R892	R1084	R603.5	R1180.5
	PR-TTUP1905R800P3S	PR-TTUP1905R800P3R	PR-TTUP1905R800P3B	R800	R992	R1184	R703.5	R1230.5
	PR-TTUP1905R900P3S	PR-TTUP1905R900P3R	PR-TTUP1905R900P3B	R900	R1092	R1284	R803.5	R1380.5
	PR-TTUP1905R1000P3S	PR-TTUP1905R1000P3R	PR-TTUP1905R1000P3B	R1000	R1192	R1384	R903.5	R1480.5

Note: 1. Made-to-order products.

2. R: sideflex radius of the first strand, R1: sideflex radius of the second strand, R2: sideflex radius of the third strand.

3. Set: Combination of two curved plastic rails and one base plate.

4. Curved plastic rail is delivered with divided units by an angle of 30° or 45°, depending on its shape.

5. Failure may result if curved plastic rails with an angle of 180° or larger are used under unlubricated condition.

6. Contact a Tsubaki representative if you're considering the use of curved plastic rails with other sideflex radius, number of strands and material shown above.

7. The dimension for mounting has changed to the dimension for JIS small plain washer, as of April, 2020.

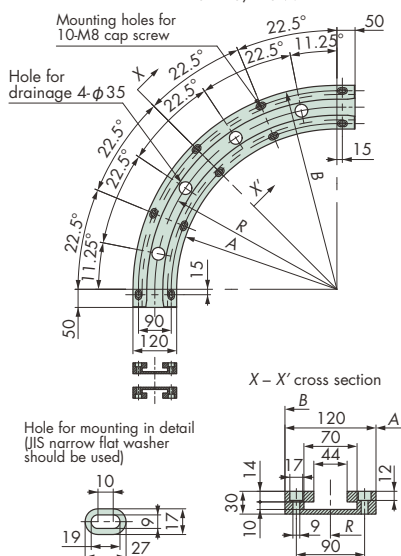


## Curved Plastic Rail

Applicable Chain	TPU826-T, TPU826P-T, TPUM826-T (Cannot be used for TPU-LH, TPUT-LH, TP-880TAB, TPU-USR)
------------------	---

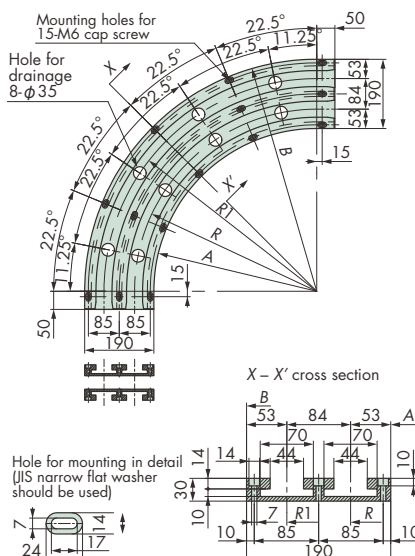
1 strand

No base plate is required for TPU/TPUM.



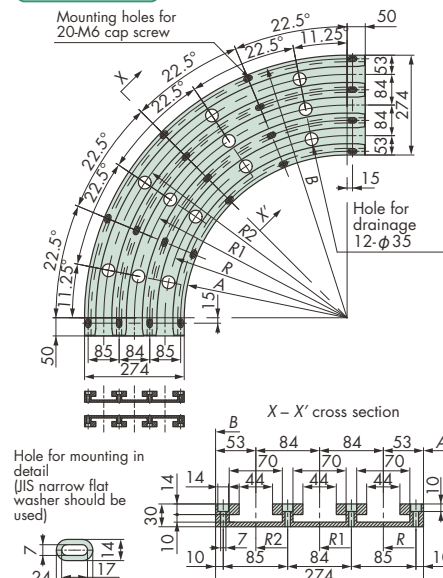
2 strands

Mounting holes for



## 3 strands

Mounting holes for  
20-M6 cap screw



\* No base plate is required for TPU/TPUM. Use the same rail for both carry-way and return-way.

Material grade	Color	Operating temperature range °C
p Note	White	-20 to 60

Note: Models dedicated to for only dry conditions (M) as well as low friction/wear resistant (PMW, PLF) can also be manufactured.

No. of strands	Tsubaki model no. set	Tsubaki model no. carry-way/return-way rail	$R$ <sup>Note: 2</sup>	$R_1$ <sup>Note: 2</sup>	$R_2$ <sup>Note: 2</sup>	A	B
1	PR-TPU826R500P1S	PR-TPU826R500P1R	R500	—	—	R440	R560
	PR-TPU826R600P1S	PR-TPU826R600P1R	R600	—	—	R540	R660
	PR-TPU826R700P1S	PR-TPU826R700P1R	R700	—	—	R640	R760
	PR-TPU826R800P1S	PR-TPU826R800P1R	R800	—	—	R740	R860
	PR-TPU826R900P1S	PR-TPU826R900P1R	R900	—	—	R840	R960
	PR-TPU826R1000P1S	PR-TPU826R1000P1R	R1000	—	—	R940	R1060
2	PR-TPU826R500P2S	PR-TPU826R500P2R	R500	R584	—	R447	R637
	PR-TPU826R600P2S	PR-TPU826R600P2R	R600	R684	—	R547	R737
	PR-TPU826R700P2S	PR-TPU826R700P2R	R700	R784	—	R647	R837
	PR-TPU826R800P2S	PR-TPU826R800P2R	R800	R884	—	R747	R937
	PR-TPU826R900P2S	PR-TPU826R900P2R	R900	R984	—	R847	R1037
	PR-TPU826R1000P2S	PR-TPU826R1000P2R	R1000	R1084	—	R947	R1137
3	PR-TPU826R500P3S	PR-TPU826R500P3R	R500	R584	R668	R447	R721
	PR-TPU826R600P3S	PR-TPU826R600P3R	R600	R684	R768	R547	R821
	PR-TPU826R700P3S	PR-TPU826R700P3R	R700	R784	R868	R647	R921
	PR-TPU826R800P3S	PR-TPU826R800P3R	R800	R884	R968	R747	R1021
	PR-TPU826R900P3S	PR-TPU826R900P3R	R900	R984	R1068	R847	R1121
	PR-TPU826R1000P3S	PR-TPU826R1000P3R	R1000	R1084	R1168	R947	R1221

Note: 1. Made-to-order products.

2.  $R$ : sideflex radius of the first strand,  $R1$ : sideflex radius of the second strand,  $R2$ : sideflex radius of the third strand.

3. Set: Combination of two rails.

4. Failure may result if curved plastic rails with an angle of 180° or larger are used under unlubricated condition.

5. Contact a Tsubaki representative if you're considering the use of curved plastic rails with other sideflex radius, number of strands and material shown above.

6. The dimension for mounting has changed to the dimension for JIS small plain washer, as of April, 2020.

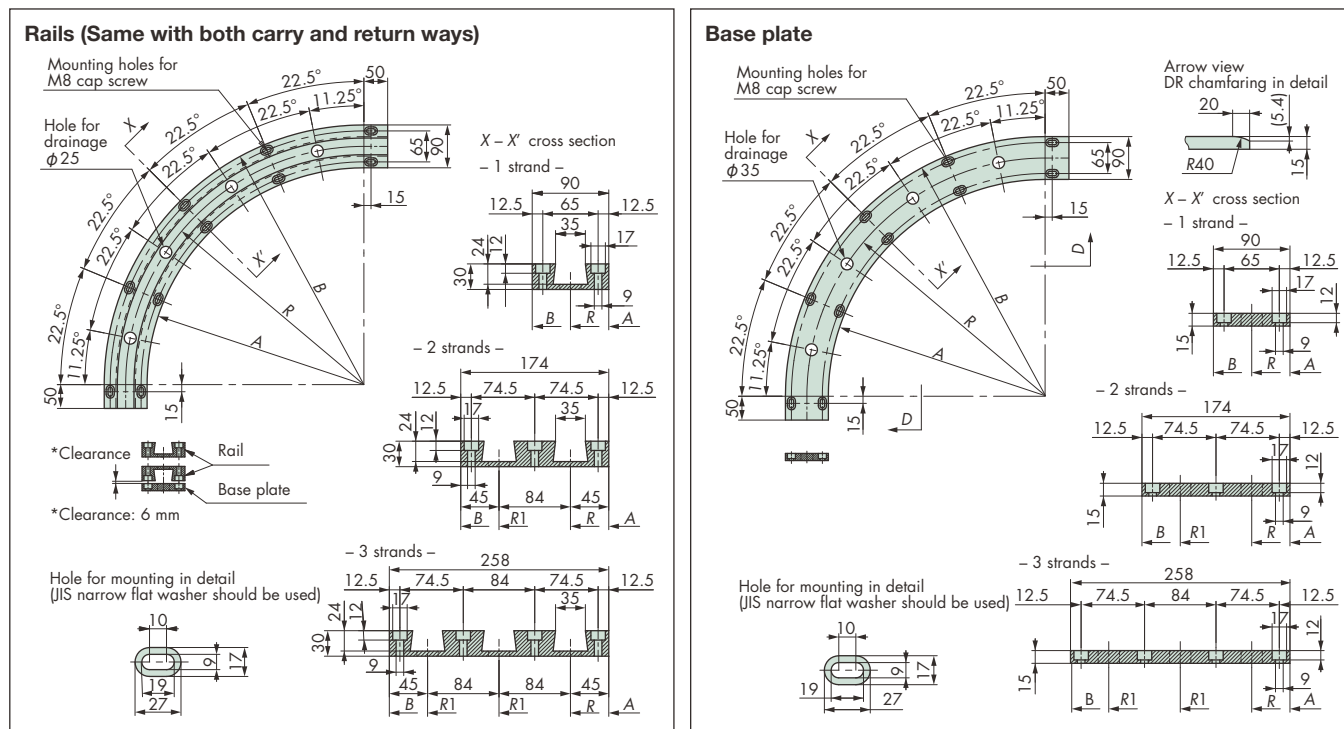
# Plastic Rails

## Finished Rail

### Curved Plastic Rail

#### Curved Plastic Rails for TNU826

Applicable Chain TNU826



No. of strands	Tsubaki model no. set	Tsubaki model no. carry-way/return-way rail	Tsubaki model no. return-way/base plate	R <sub>Note: 2</sub>	R <sub>1</sub> Note: 2	R <sub>2</sub> Note: 2	A	B
1	PR-TNU826R500P1S	PR-TNU826R500P1R	PR-TNU826R500P1B	R500	—	—	R455	R545
	PR-TNU826R600P1S	PR-TNU826R600P1R	PR-TNU826R600P1B	R600	—	—	R555	R645
	PR-TNU826R700P1S	PR-TNU826R700P1R	PR-TNU826R700P1B	R700	—	—	R655	R745
	PR-TNU826R800P1S	PR-TNU826R800P1R	PR-TNU826R800P1B	R800	—	—	R755	R845
	PR-TNU826R900P1S	PR-TNU826R900P1R	PR-TNU826R900P1B	R900	—	—	R855	R945
	PR-TNU826R1000P1S	PR-TNU826R1000P1R	PR-TNU826R1000P1B	R1000	—	—	R955	R1045
2	PR-TNU826R500P2S	PR-TNU826R500P2R	PR-TNU826R500P2B	R500	R584	—	R455	R629
	PR-TNU826R600P2S	PR-TNU826R600P2R	PR-TNU826R600P2B	R600	R684	—	R555	R729
	PR-TNU826R700P2S	PR-TNU826R700P2R	PR-TNU826R700P2B	R700	R784	—	R655	R829
	PR-TNU826R800P2S	PR-TNU826R800P2R	PR-TNU826R800P2B	R800	R884	—	R755	R929
	PR-TNU826R900P2S	PR-TNU826R900P2R	PR-TNU826R900P2B	R900	R984	—	R855	R1029
	PR-TNU826R1000P2S	PR-TNU826R1000P2R	PR-TNU826R1000P2B	R1000	R1084	—	R955	R1129
3	PR-TNU826R500P3S	PR-TNU826R500P3R	PR-TNU826R500P3B	R500	R584	R668	R455	R713
	PR-TNU826R600P3S	PR-TNU826R600P3R	PR-TNU826R600P3B	R600	R684	R768	R555	R813
	PR-TNU826R700P3S	PR-TNU826R700P3R	PR-TNU826R700P3B	R700	R784	R868	R655	R913
	PR-TNU826R800P3S	PR-TNU826R800P3R	PR-TNU826R800P3B	R800	R884	R968	R755	R1013
	PR-TNU826R900P3S	PR-TNU826R900P3R	PR-TNU826R900P3B	R900	R984	R1068	R855	R1113
	PR-TNU826R1000P3S	PR-TNU826R1000P3R	PR-TNU826R1000P3B	R1000	R1084	R1168	R955	R1213

Note: 1. Made-to-order products.

2. R: sideflex radius of the first strand, R<sub>1</sub>: sideflex radius of the second strand, R<sub>2</sub>: sideflex radius of the third strand.

3. Set: Combination of two curved plastic rails and one base plate.

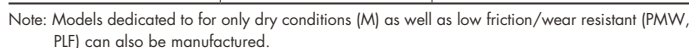
4. Failure may result if curved plastic rails with an angle of 180° or larger are used under unlubricated condition.

5. Contact a Tsubaki representative if you're considering the use of curved plastic rails with other sideflex radius, number of strands and material shown above.

6. The dimension for mounting has changed to the dimension for JIS small plain washer, as of April, 2020.

## Curved Pastic Rail

## Applicable Chain TNU1143



Note: 1. Made-to-order products.  
2. R: sideflex radius of the first strand, R1: sideflex radius of the second strand, R2: sideflex radius of the third strand.  
3. Set: Combination of two curved plastic rails and one base plate.  
4. Failure may result if curved plastic rails with an angle of 180° or larger are used under unlubricated condition.  
5. Contact a Tsubaki representative if you're considering the use of curved plastic rails with other sideflex radius, number of strands and material shown above.  
6. The dimension for mounting has changed to the dimension for JIS small plain washer, as of April, 2020.

# Plastic Rails

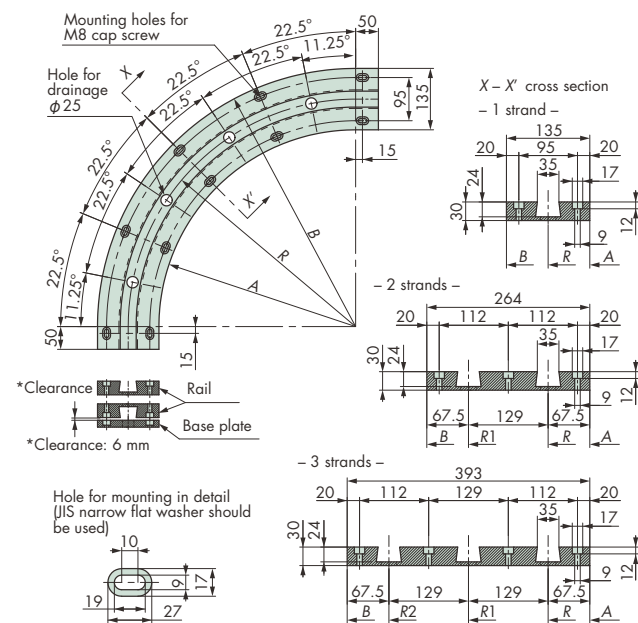
## Finished Rail

### Curved Plastic Rail

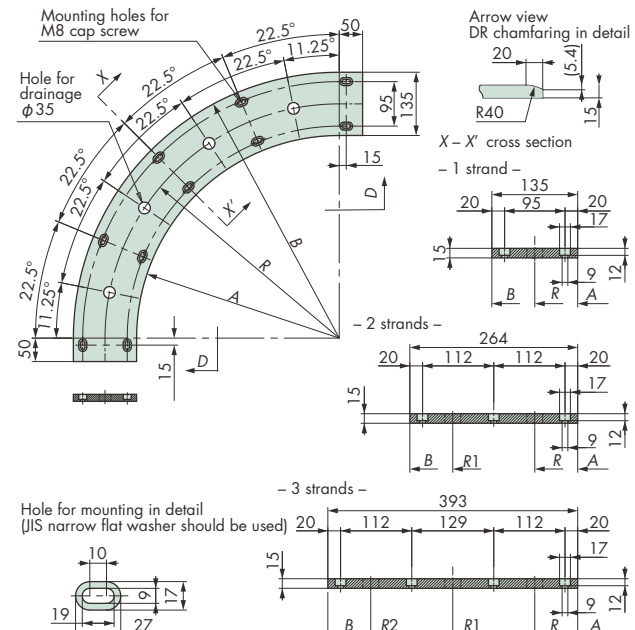
#### ■ Curved Plastic Rails for TNU1270

Applicable Chain TNU1270

##### Rails (Same with both carry and return ways)



##### Base plate



Material grade	Color	Operating temperature range °C
p Note	White	-20 to 60

Note: Models dedicated to for only dry conditions (M) as well as low friction/wear resistant (PMW, PLF) can also be manufactured.

No. of strands	Tsubaki model no. set	Tsubaki model no. carry-way/return-way rail	Tsubaki model no. return-way/base plate	R Note: 2	R1 Note: 2	R2 Note: 2	A	B
1	PR-TNU1270R500P1S	PR-TNU1270R500P1R	PR-TNU1270R500P1B	R500	—	—	R432.5	R567.5
	PR-TNU1270R600P1S	PR-TNU1270R600P1R	PR-TNU1270R600P1B	R600	—	—	R532.5	R667.5
	PR-TNU1270R700P1S	PR-TNU1270R700P1R	PR-TNU1270R700P1B	R700	—	—	R632.5	R767.5
	PR-TNU1270R800P1S	PR-TNU1270R800P1R	PR-TNU1270R800P1B	R800	—	—	R732.5	R867.5
	PR-TNU1270R900P1S	PR-TNU1270R900P1R	PR-TNU1270R900P1B	R900	—	—	R832.5	R967.5
2	PR-TNU1270R1000P1S	PR-TNU1270R1000P1R	PR-TNU1270R1000P1B	R1000	—	—	R932.5	R1067.5
	PR-TNU1270R500P2S	PR-TNU1270R500P2R	PR-TNU1270R500P2B	R500	R629	—	R432.5	R696.5
	PR-TNU1270R600P2S	PR-TNU1270R600P2R	PR-TNU1270R600P2B	R600	R729	—	R532.5	R796.5
	PR-TNU1270R700P2S	PR-TNU1270R700P2R	PR-TNU1270R700P2B	R700	R829	—	R632.5	R896.5
	PR-TNU1270R800P2S	PR-TNU1270R800P2R	PR-TNU1270R800P2B	R800	R929	—	R732.5	R996.5
3	PR-TNU1270R900P2S	PR-TNU1270R900P2R	PR-TNU1270R900P2B	R900	R1029	—	R832.5	R1096.5
	PR-TNU1270R1000P2S	PR-TNU1270R1000P2R	PR-TNU1270R1000P2B	R1000	R1129	—	R932.5	R1196.5
	PR-TNU1270R500P3S	PR-TNU1270R500P3R	PR-TNU1270R500P3B	R500	R629	R758	R432.5	R825.5
	PR-TNU1270R600P3S	PR-TNU1270R600P3R	PR-TNU1270R600P3B	R600	R729	R858	R532.5	R925.5
	PR-TNU1270R700P3S	PR-TNU1270R700P3R	PR-TNU1270R700P3B	R700	R829	R958	R632.5	R1025.5
	PR-TNU1270R800P3S	PR-TNU1270R800P3R	PR-TNU1270R800P3B	R800	R929	R1058	R732.5	R1125.5
	PR-TNU1270R900P3S	PR-TNU1270R900P3R	PR-TNU1270R900P3B	R900	R1029	R1158	R832.5	R1225.5
	PR-TNU1270R1000P3S	PR-TNU1270R1000P3R	PR-TNU1270R1000P3B	R1000	R1129	R1258	R932.5	R1325.5

Note: 1. Made-to-order products.

2. R: sideflex radius of the first strand, R1: sideflex radius of the second strand, R2: sideflex radius of the third strand.

3. Set: Combination of two curved plastic rails and one base plate.

4. Failure may result if curved plastic rails with an angle of 180° or larger are used under unlubricated condition.

5. Contact a Tsubaki representative if you're considering the use of curved plastic rails with other sideflex radius, number of strands and material shown above.

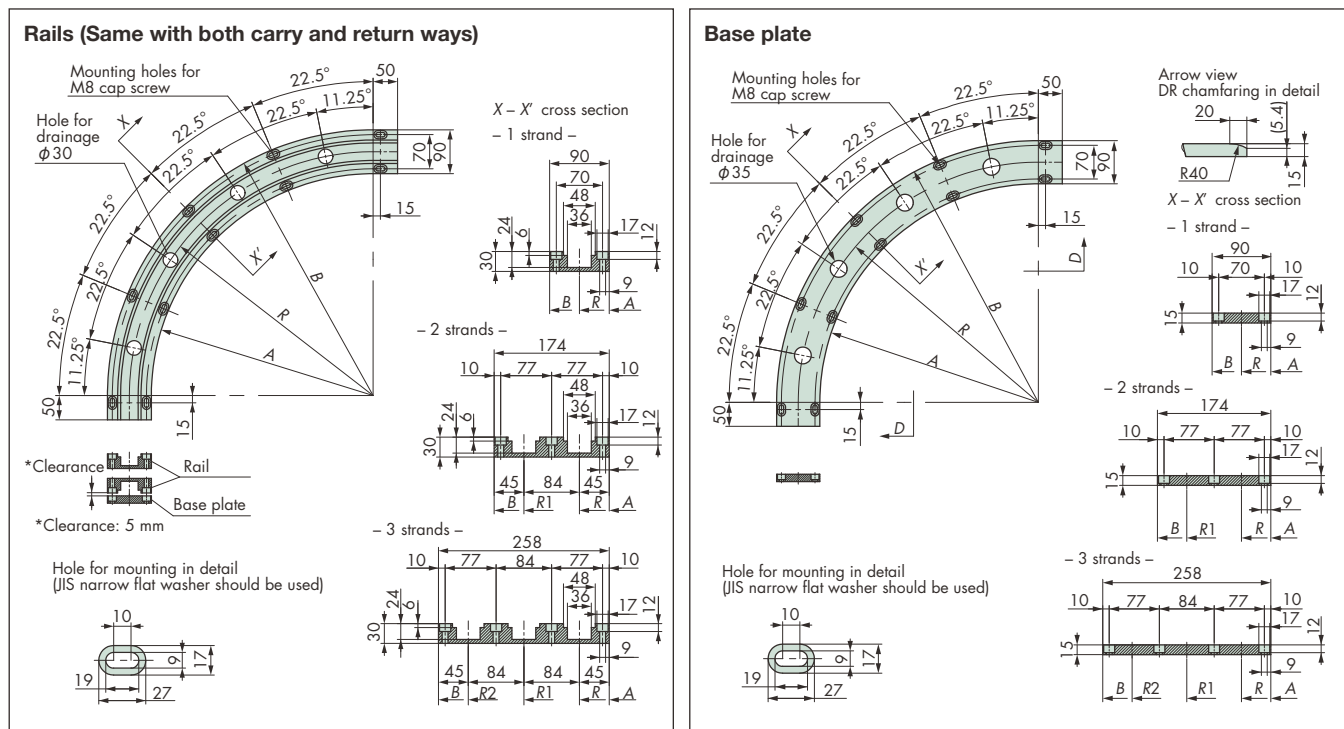
6. The dimension for mounting has changed to the dimension for JIS small plain washer, as of April, 2020.

## Finished Rail

## Curved Plastic Rail

## ■ Curved Plastic Rails for TTKU826

Applicable Chain TTKU826



Material grade	Color	Operating temperature range °C
P Note	White	-20 to 60

Note: Models dedicated to for only dry conditions (M) as well as low friction/wear resistant (PMW, PLF) can also be manufactured.

No. of strands	Tsubaki model no. set	Tsubaki model no. carry-way/return-way rail	Tsubaki model no. return-way/base plate	R Note: 2	R1 Note: 2	R2 Note: 2	A	B
1	PR-TTKU826R500P1S	PR-TTKU826R500P1R	PR-TTKU826R500P1B	R500	—	—	R455	R545
	PR-TTKU826R600P1S	PR-TTKU826R600P1R	PR-TTKU826R600P1B	R600	—	—	R555	R645
	PR-TTKU826R700P1S	PR-TTKU826R700P1R	PR-TTKU826R700P1B	R700	—	—	R655	R745
	PR-TTKU826R800P1S	PR-TTKU826R800P1R	PR-TTKU826R800P1B	R800	—	—	R755	R845
	PR-TTKU826R900P1S	PR-TTKU826R900P1R	PR-TTKU826R900P1B	R900	—	—	R855	R945
	PR-TTKU826R1000P1S	PR-TTKU826R1000P1R	PR-TTKU826R1000P1B	R1000	—	—	R955	R1045
2	PR-TTKU826R500P2S	PR-TTKU826R500P2R	PR-TTKU826R500P2B	R500	R584	—	R455	R629
	PR-TTKU826R600P2S	PR-TTKU826R600P2R	PR-TTKU826R600P2B	R600	R684	—	R555	R729
	PR-TTKU826R700P2S	PR-TTKU826R700P2R	PR-TTKU826R700P2B	R700	R784	—	R655	R829
	PR-TTKU826R800P2S	PR-TTKU826R800P2R	PR-TTKU826R800P2B	R800	R884	—	R755	R929
	PR-TTKU826R900P2S	PR-TTKU826R900P2R	PR-TTKU826R900P2B	R900	R984	—	R855	R1029
	PR-TTKU826R1000P2S	PR-TTKU826R1000P2R	PR-TTKU826R1000P2B	R1000	R1084	—	R955	R1129
3	PR-TTKU826R500P3S	PR-TTKU826R500P3R	PR-TTKU826R500P3B	R500	R584	R668	R455	R713
	PR-TTKU826R600P3S	PR-TTKU826R600P3R	PR-TTKU826R600P3B	R600	R684	R768	R555	R813
	PR-TTKU826R700P3S	PR-TTKU826R700P3R	PR-TTKU826R700P3B	R700	R784	R868	R655	R913
	PR-TTKU826R800P3S	PR-TTKU826R800P3R	PR-TTKU826R800P3B	R800	R884	R968	R755	R1013
	PR-TTKU826R900P3S	PR-TTKU826R900P3R	PR-TTKU826R900P3B	R900	R984	R1068	R855	R1113
	PR-TTKU826R1000P3S	PR-TTKU826R1000P3R	PR-TTKU826R1000P3B	R1000	R1084	R1168	R955	R1213

Note: 1. Made-to-order products.

2. R: sideflex radius of the first strand, R1: sideflex radius of the second strand, R2: sideflex radius of the third strand.

3. Set: Combination of two curved plastic rails and one base plate.

4. Failure may result if curved plastic rails with an angle of 180° or larger are used under unlubricated condition.

5. Contact a Tsubaki representative if you're considering the use of curved plastic rails with other sideflex radius, number of strands and material shown above.

6. The dimension for mounting has changed to the dimension for JIS small plain washer, as of April, 2020.



# Plastic Rails

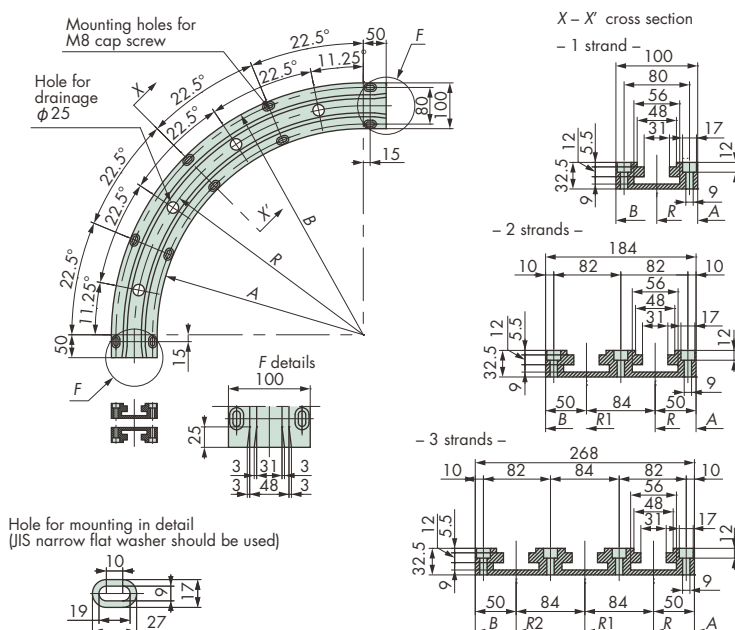
## Finished Rail

### Curved Plastic Rail

#### ■ Curved Plastic Rails for TRU826

Applicable Chain TRU826-T

#### Rails (Same with both carry and return ways)



\* No base plate is required for TRU. Use the same rail for both carry-way and return-way.

Material grade	Color	Operating temperature range °C
p Note	White	-20 to 60

Note: Models dedicated to for only dry conditions (M) as well as low friction/wear resistant (PMW, PLF) can also be manufactured.

No. of strands	Tsubaki model no. set	Tsubaki model no. carry-way/return-way rail	R Note: 2	R1 Note: 2	R2 Note: 2	A	B
1	PR-TRU826R500P1S	PR-TRU826R500P1R	R500	-	-	R450	R550
	PR-TRU826R600P1S	PR-TRU826R600P1R	R600	-	-	R550	R650
	PR-TRU826R700P1S	PR-TRU826R700P1R	R700	-	-	R650	R750
	PR-TRU826R800P1S	PR-TRU826R800P1R	R800	-	-	R750	R850
	PR-TRU826R900P1S	PR-TRU826R900P1R	R900	-	-	R850	R950
	PR-TRU826R1000P1S	PR-TRU826R1000P1R	R1000	-	-	R950	R1050
2	PR-TRU826R500P2S	PR-TRU826R500P2R	R500	R584	-	R450	R634
	PR-TRU826R600P2S	PR-TRU826R600P2R	R600	R684	-	R550	R734
	PR-TRU826R700P2S	PR-TRU826R700P2R	R700	R784	-	R650	R834
	PR-TRU826R800P2S	PR-TRU826R800P2R	R800	R884	-	R750	R934
	PR-TRU826R900P2S	PR-TRU826R900P2R	R900	R984	-	R850	R1034
	PR-TRU826R1000P2S	PR-TRU826R1000P2R	R1000	R1094	-	R950	R1134
3	PR-TRU826R500P3S	PR-TRU826R500P3R	R500	R584	R668	R450	R718
	PR-TRU826R600P3S	PR-TRU826R600P3R	R600	R684	R768	R550	R818
	PR-TRU826R700P3S	PR-TRU826R700P3R	R700	R784	R868	R650	R918
	PR-TRU826R800P3S	PR-TRU826R800P3R	R800	R884	R968	R750	R1018
	PR-TRU826R900P3S	PR-TRU826R900P3R	R900	R984	R1068	R850	R1118
	PR-TRU826R1000P3S	PR-TRU826R1000P3R	R1000	R1084	R1168	R950	R1218

Note: 1. Made-to-order products.

2. R: sideflex radius of the first strand, R1: sideflex radius of the second strand, R2: sideflex radius of the third strand.

3. Set: Combination of two curved plastic rails and one base plate.

4. Failure may result if curved plastic rails with an angle of 180° or larger are used under unlubricated condition.

5. Contact a Tsubaki representative if you're considering the use of curved plastic rails with other sideflex radius, number of strands and material shown above.

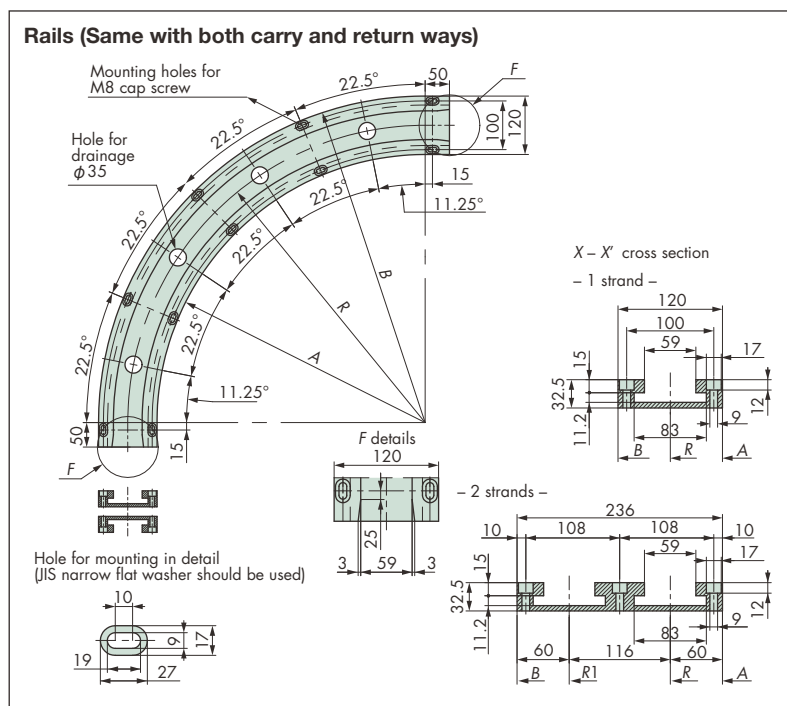
6. The dimension for mounting has changed to the dimension for JIS small plain washer, as of April, 2020.

## Finished Rail

### Curved Plastic Rail

#### ■ Curved Plastic Rails for TPUS1143

Applicable Chain TPUS1143-T-LFB, TPU953-T-LBP, TPUS-Y-LAP



\* No base plate is required for TPUS. Use the same rail for both carry-way and return-way.

Material grade	Color	Operating temperature range °C
p Note	White	-20 to 60

Note: Models dedicated to for only dry conditions (M) as well as low friction/wear resistant (PMW, PLF) can also be manufactured.

No. of strands	Tsubaki model no. set	Tsubaki model no. carry-way/return-way rail	R <sup>Note: 2</sup>	R1 <sup>Note: 2</sup>	A	B
1	PR-TPUS1143R610P1S	PR-TPUS1143R610P1R	R610	—	R550	R670
	PR-TPUS1143R700P1S	PR-TPUS1143R700P1R	R700	—	R640	R760
	PR-TPUS1143R800P1S	PR-TPUS1143R800P1R	R800	—	R740	R860
	PR-TPUS1143R900P1S	PR-TPUS1143R900P1R	R900	—	R840	R960
	PR-TPUS1143R1000P1S	PR-TPUS1143R1000P1R	R1000	—	R940	R1060
2	PR-TPUS1143R610P2S	PR-TPUS1143R610P2R	R610	R726	R550	R786
	PR-TPUS1143R700P2S	PR-TPUS1143R700P2R	R700	R816	R640	R876
	PR-TPUS1143R800P2S	PR-TPUS1143R800P2R	R800	R916	R740	R976
	PR-TPUS1143R900P2S	PR-TPUS1143R900P2R	R900	R1016	R840	R1076
	PR-TPUS1143R1000P2S	PR-TPUS1143R1000P2R	R1000	R1116	R940	R1176

Note: 1. Made-to-order products.

2. R: sideflex radius of the first strand, R1: sideflex radius of the second strand.

3. Set: Combination of two curved plastic rails and one base plate.

4. Failure may result if curved plastic rails with an angle of 180° or larger are used under unlubricated condition.

5. Contact a Tsubaki representative if you're considering the use of curved plastic rails with other sideflex radius, number of strands and material shown above.

6. The dimension for mounting has changed to the dimension for JIS small plain washer, as of April, 2020.



# Plastic Rails

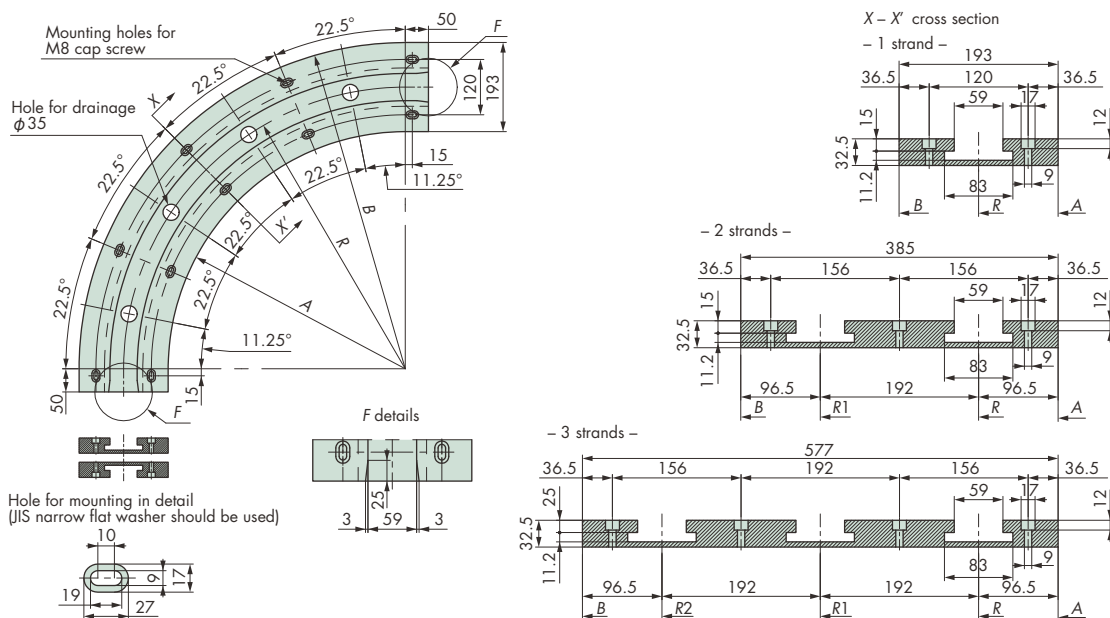
## Finished Rail

### Curved Plastic Rail

#### ■ Curved Plastic Rails for TPUS1905

Applicable Chain TPUS1905-T-LFB, TPUS1905-T-LBP

#### Rails (Same with both carry and return ways)



\* No base plate is required for TPUS. Use the same rail for both carry-way and return-way.

Material grade	Color	Operating temperature range °C
P Note	White	-20 to 60

Note: Models dedicated to for only dry conditions (M) as well as low friction/wear resistant (PMW, PLF) can also be manufactured.

No. of strands	Tsubaki model no. set	Tsubaki model no. carry-way/return-way rail	R Note: 2	R1 Note: 2	R2 Note: 2	A	B
1	PR-TPUS1905R610P1S	PR-TPUS1905R610P1R	R610	—	—	R513.5	R706.5
	PR-TPUS1905R700P1S	PR-TPUS1905R700P1R	R700	—	—	R603.5	R796.5
	PR-TPUS1905R800P1S	PR-TPUS1905R800P1R	R800	—	—	R703.5	R896.5
	PR-TPUS1905R900P1S	PR-TPUS1905R900P1R	R900	—	—	R803.5	R996.5
	PR-TPUS1905R1000P1S	PR-TPUS1905R1000P1R	R1000	—	—	R903.5	R1096.5
2	PR-TPUS1905R610P2S	PR-TPUS1905R610P2R	R610	R802	—	R513.5	R898.5
	PR-TPUS1905R700P2S	PR-TPUS1905R700P2R	R700	R892	—	R603.5	R988.5
	PR-TPUS1905R800P2S	PR-TPUS1905R800P2R	R800	R992	—	R703.5	R1088.5
	PR-TPUS1905R900P2S	PR-TPUS1905R900P2R	R900	R1092	—	R803.5	R1188.5
	PR-TPUS1905R1000P2S	PR-TPUS1905R1000P2R	R1000	R1192	—	R903.5	R1288.5
3	PR-TPUS1905R610P3S	PR-TPUS1905R610P3R	R610	R802	R994	R513.5	R1090.5
	PR-TPUS1905R700P3S	PR-TPUS1905R700P3R	R700	R892	R1084	R603.5	R1180.5
	PR-TPUS1905R800P3S	PR-TPUS1905R800P3R	R800	R992	R1184	R703.5	R1280.5
	* PR-TPUS1905R900P3S	* PR-TPUS1905R900P3R	R900	R1092	R1284	R803.5	R1380.5
	* PR-TPUS1905R1000P3S	* PR-TPUS1905R1000P3R	R1000	R1192	R1384	R903.5	R1480.5

Note: 1. Made-to-order products.

2. R: sideflex radius of the first strand, R1: sideflex radius of the second strand, R2: sideflex radius of the third strand.

3. Set: Combination of two curved plastic rails and one base plate.

4. Curved plastic rails are delivered with divided units by an angle of 30° or 45°, depending on its shape.

5. Failure may result if curved plastic rails with an angle of 180° or larger are used under unlubricated condition.

6. Contact a Tsubaki representative if you're considering the use of curved plastic rails with other sideflex radius, number of strands and material shown above.

7. The dimension for mounting has changed to the dimension for JIS small plain washer, as of April, 2020.

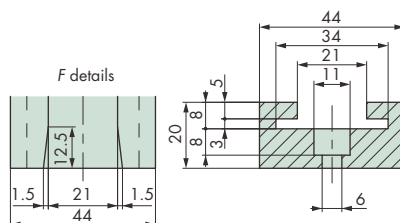
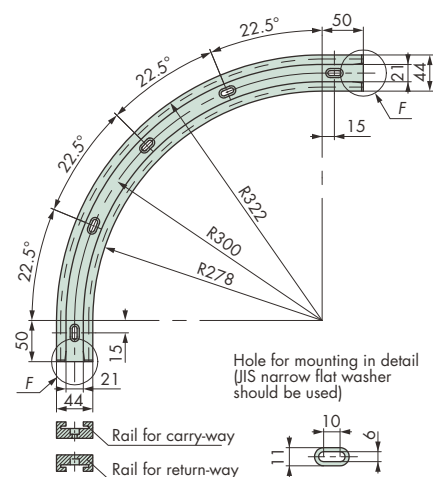
## Finished Rail

## Curved Plastic Rail

## ■ Curved Plastic Rails for RSP40-T-CU

Note: Use PR-PO12-W-2M and PR-PO12-G-2M rails on page 333 for straight section.

Applicable Chain RSP40-T-CU

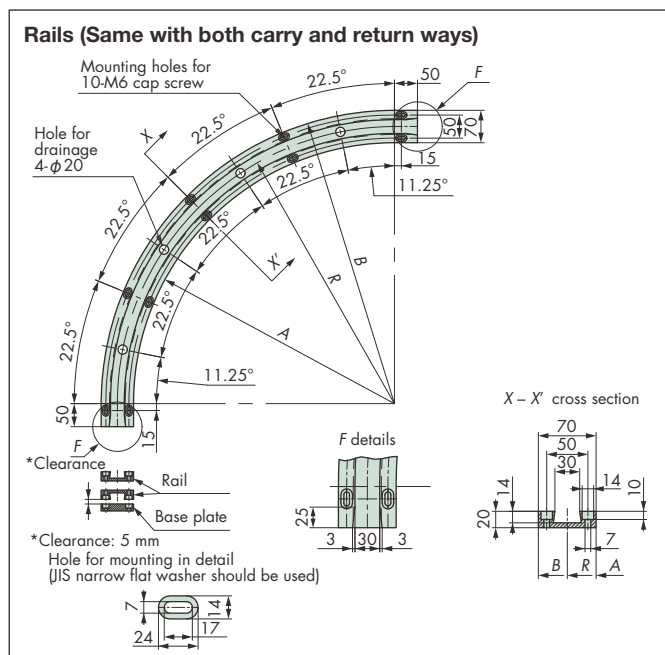


Tsubaki model no. set	Carry-way/Return-way rail	Material grade	Color	Center radius R mm	Inner circumference A	Outer circumference B
PR-RSP40R300P1S	PR-RSP40R300P1R	10-100	White	R300	R278	R322

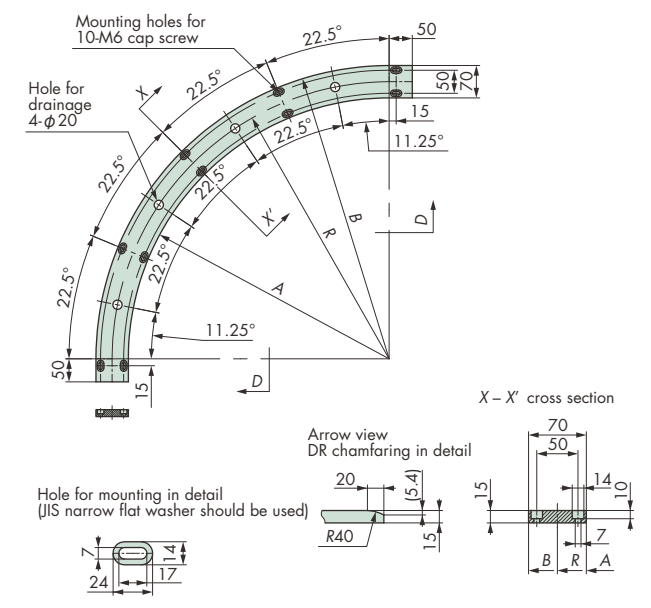
- Note: 1. Made-to-order product.  
 2. Set: Combination of two rails of carry and return ways.  
 3. The above model numbers indicate ultra-high molecular weight polyethylene (UHMW-PE).  
 4. Failure may result if curved plastic rails with an angle of 180° or larger are used under unlubricated condition.  
 5. Contact a Tsubaki representative if you're considering dimensions other than the above.  
 6. The dimension for mounting has changed to the dimension for JIS small plain washer, as of April, 2020.

## ■ Curved Plastic Rails for RSP60-CU

Applicable Chain RSP60-CU, RSP60P-CU



## Base plate



Material grade	Color	Operating temperature range °C
P Note	White	-20 to 60

Note: Models dedicated to for only dry conditions (M) as well as low friction/wear resistant (PMW, PLF) can also be manufactured.

Tsubaki model no. set	Tsubaki model no. carry-way/return-way rail	Tsubaki model no. return-way/base plate	R	A	B
PR-RSP60R600P1S	PR-RSP60R600P1R	PR-RSP60R600P1B	R600	R565	R635
PR-RSP60R700P1S	PR-RSP60R700P1R	PR-RSP60R700P1B	R700	R665	R735
PR-RSP60R800P1S	PR-RSP60R800P1R	PR-RSP60R800P1B	R800	R765	R835
PR-RSP60R900P1S	PR-RSP60R900P1R	PR-RSP60R900P1B	R900	R865	R935
PR-RSP60R1000P1S	PR-RSP60R1000P1R	PR-RSP60R1000P1B	R1000	R965	R1035

- Note: 1. Made-to-order products.  
 2. Set: Combination of two base rails and one base.  
 3. The use of curved plastic rails with an inscribed angle of 180° or higher may cause failure under unlubricated conditions.  
 4. Please contact us when you're considering the use of sideflex radius, number of rows, material of chains other than the above.  
 5. The dimension for mounting has changed to the dimension for JIS small plain washer, as of April, 2020.

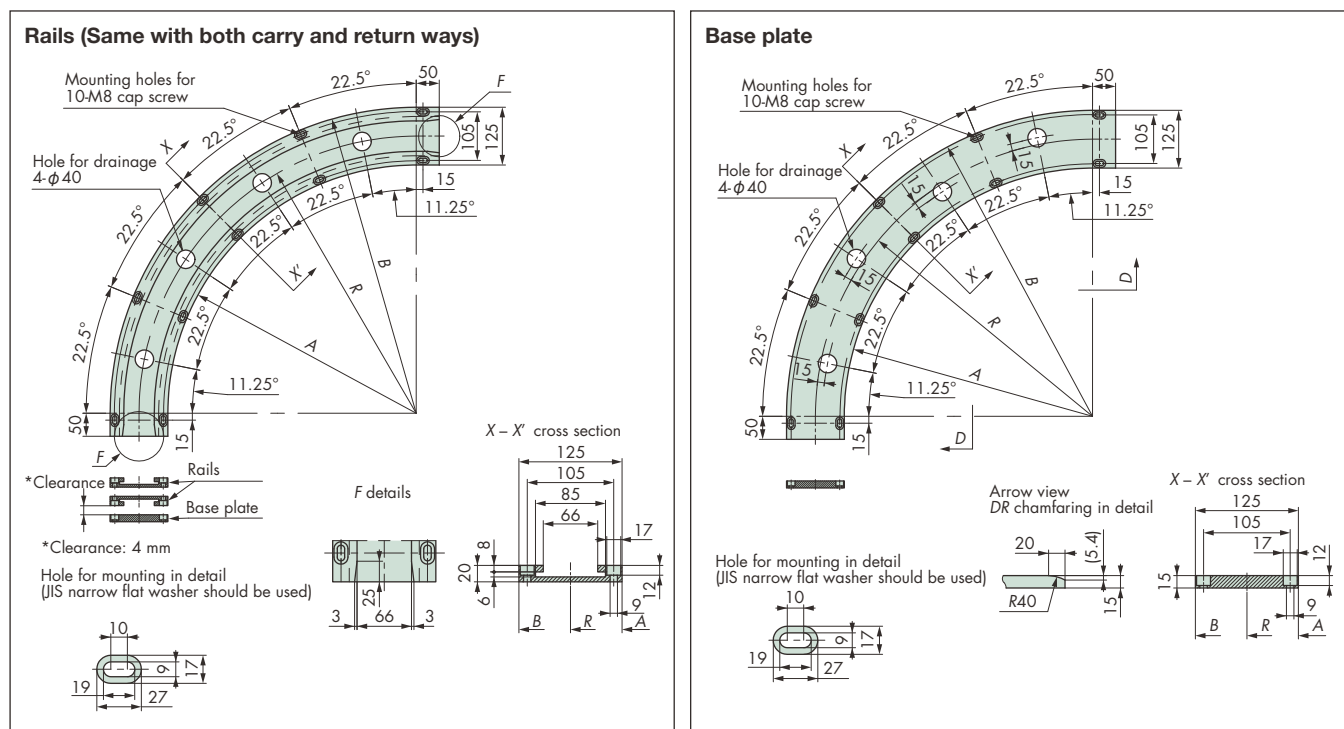
# Plastic Rails

## Finished Rail

### Curved Plastic Rail

#### Curved Plastic Rails for RSP60-CU-2

Applicable Chain RSP60-CU-2



Material grade	Color	Operating temperature range °C
p Note	White	-20 to 60

Note: Models dedicated to for only dry conditions (M) as well as low friction/wear resistant (PMW, PLF) can also be manufactured.

Tsubaki model no. set	Tsubaki model no. carry-way/return-way rail	Tsubaki model no. return-way/base plate	R	A	B
PR-RSP60-2R600P1S	PR-RSP60-2R600P1R	PR-RSP60-2R600P1B	R600	R537.5	R662.5
PR-RSP60-2R700P1S	PR-RSP60-2R700P1R	PR-RSP60-2R700P1B	R700	R637.5	R762.5
PR-RSP60-2R800P1S	PR-RSP60-2R800P1R	PR-RSP60-2R800P1B	R800	R737.5	R862.5
PR-RSP60-2R900P1S	PR-RSP60-2R900P1R	PR-RSP60-2R900P1B	R900	R837.5	R962.5
PR-RSP60-2R1000P1S	PR-RSP60-2R1000P1R	PR-RSP60-2R1000P1B	R1000	R937.5	R1062.5

Note: 1. Made-to-order products.

2. Set: Combination of two curved plastic rails and one base plate.

3. Failure may result if curved plastic rails with an angle of 180° or larger are used under unlubricated condition.

4. Contact a Tsubaki representative if you're considering the use of curved plastic rails with other sideflex radius, number of strands and material shown above.

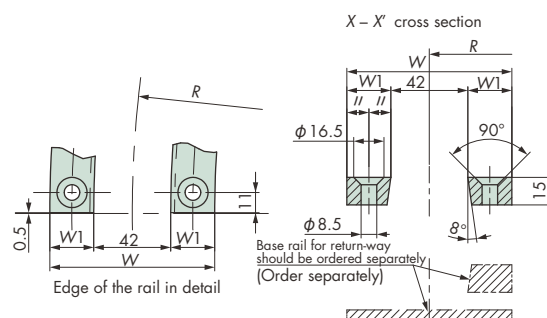
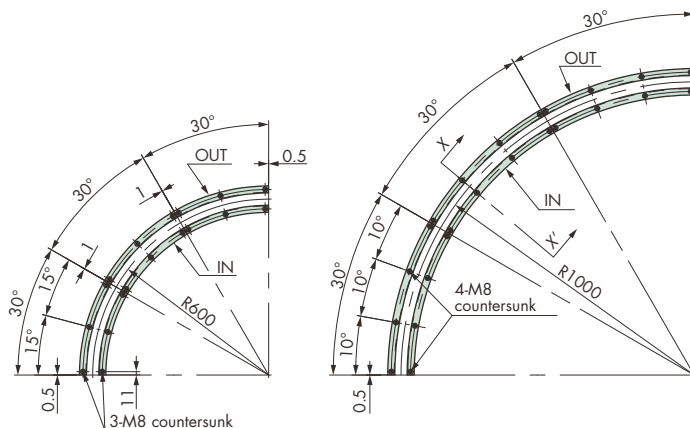
5. The dimension for mounting has changed to the dimension for JIS small plain washer, as of April, 2020.

## Other Rails

## ■ Curved Plastic Rails for TTUP

for R600

for R1000



Applicable chain	Tsubaki model no. <small>Note: 4</small>	Center radius <i>R</i> mm	Side	Material grade	Color	Angle	Dimensions			Number of holes	Operating temperature range °C
							Total width <i>W</i>	Rail width <i>W</i> 1	Pitch of holes <i>C</i>		
TTUP826 TTUP826P TTUPH826 TTU826	PR-32R60030-W-IN	600	Inside	10-100	White	30°	90	24	66	3	-20 to 60
	PR-32R60030-W-OUT		Outside	10-100	White						
	PR-32R60030-G-IN	600	Inside	10-301	Green						
	PR-32R60030-G-OUT		Outside	10-301	Green						
	PR-32R80030-W-IN	800	Inside	10-100	White						
	PR-32R80030-W-OUT		Outside	10-100	White						
	PR-32R80030-G-IN	800	Inside	10-301	Green						
	PR-32R80030-G-OUT		Outside	10-301	Green						
	PR-32R100030-W-IN	1000	Inside	10-100	White					4	
	PR-32R100030-W-OUT		Outside	10-100	White						
TTUP1143 TTUP1143P TTU1143	PR-44R60030-W-IN	600	Inside	10-100	White	30°	122	40	82	3	
	PR-44R60030-W-OUT		Outside	10-100	White						
	PR-44R60030-G-IN	600	Inside	10-301	Green						
	PR-44R60030-G-OUT		Outside	10-301	Green						
	PR-44R80030-W-IN	800	Inside	10-100	White						
	PR-44R80030-W-OUT		Outside	10-100	White						
	PR-44R80030-G-IN	800	Inside	10-301	Green						
	PR-44R80030-G-OUT		Outside	10-301	Green						
	PR-44R100030-W-IN	1000	Inside	10-100	White					4	
	PR-44R100030-W-OUT		Outside	10-100	White						
TTUP1905 TTU1905	PR-74R60030-W-IN	600	Inside	10-100	White	30°	192	75	117	3	
	PR-74R60030-W-OUT		Outside	10-100	White						
	PR-74R60030-G-IN	600	Inside	10-301	Green						
	PR-74R60030-G-OUT		Outside	10-301	Green						
	PR-74R80030-W-IN	800	Inside	10-100	White						
	PR-74R80030-W-OUT		Outside	10-100	White						
	PR-74R80030-G-IN	800	Inside	10-301	Green						
	PR-74R80030-G-OUT		Outside	10-301	Green						
	PR-74R100030-W-IN	1000	Inside	10-100	White					4	
	PR-74R100030-W-OUT		Outside	10-100	White						
	PR-74R100030-G-IN	1000	Inside	10-301	Green						
	PR-74R100030-G-OUT		Outside	10-301	Green						

Note: 1. Made-to-order products.

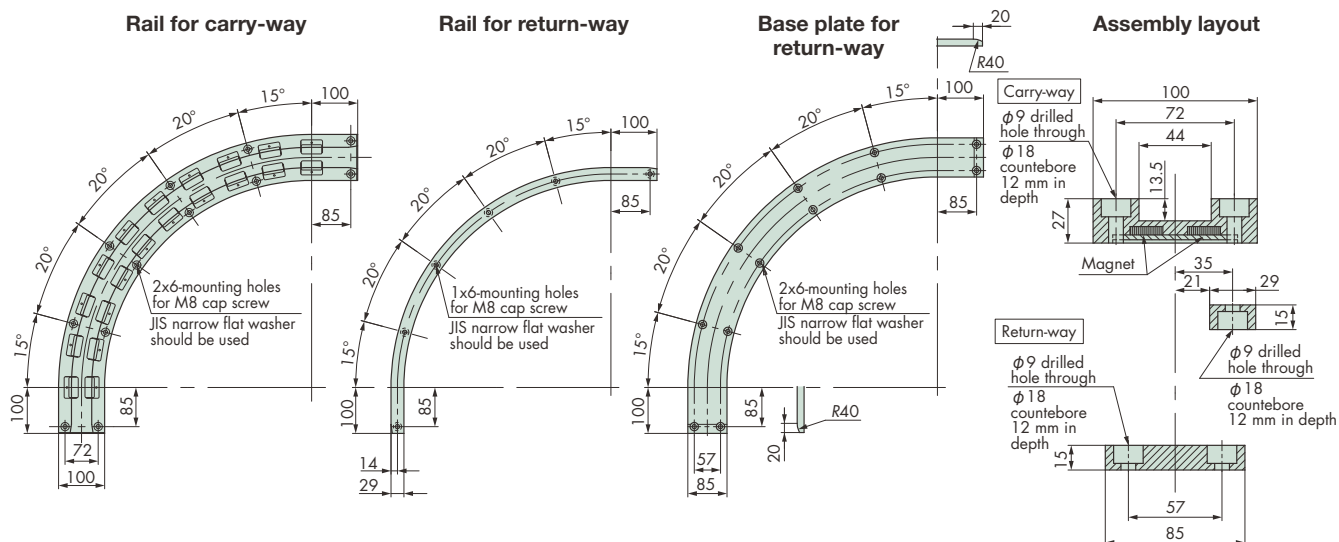
2. Mounting holes are drilled to the indicated dimensions.

3. A custom base may be available upon request.

4. The product with the above Tsubaki model number is a curved plastic rail with an angle of 30°. Please add the number of rails as necessary.

## Other Rails

### ■ Curved Plastic Rails with Magnet for TTUPM838H



Tsubaki model no.	Installation position	Center radius $R$ mm	Material grade	Color	Operating temperature range °C
PR-TTUPMHR500P1R1	Rail for carry-way	500	10-100	White	-20 to 60
PR-TTUPMHR500P1R2	Rail for return-way				
PR-TTUPMHR500P1B	Base plate for return-way				

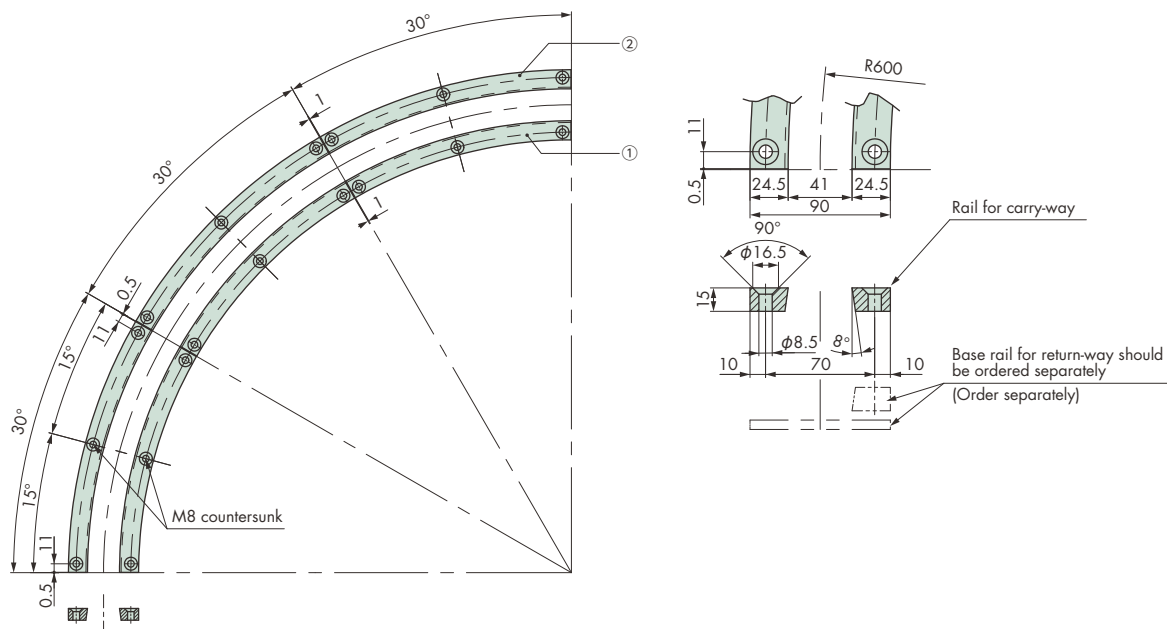
Note: 1. Made-to-order products. Contact a Tsubaki representative for more information.

2. Contact a Tsubaki representative if you're considering the use of plastic rails with other shown above (sideflex radius, number of strands and material).

3. The dimension for mounting has changed to the dimension for JIS small plain washer, as of April, 2020.

4. The shapes of both inlet and outlet of the base plate have changed to the shapes of round-chamfering as of April, 2020.

### ■ Curved Plastic Rails for TTUPS-H



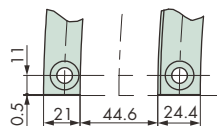
No.	Tsubaki model no. <small>Note: 3</small>	Center radius <i>R</i> mm	Side	Material grade	Color	Angle	Operating temperature range °C
①	PR-TTUPSH-R600WIN30	600	Inside	10-100	White	30°	-20 to 60
②	PR-TTUPSH-R600WOUT30		Outside				
①	PR-TTUPSH-R600GIN30	600	Inside	10-301	Green	30°	
②	PR-TTUPSH-R600GOUT30		Outside				

Note: 1. Made-to-order products.

1. Made-to-order products.
2. A custom base may be available upon request.

3. The product with the above model number is a curved plastic rail with an angle of 30°. Please add the number of rails as necessary.

### ■ Curved Plastic Rails for TTUP-LLPC



No.	Tsubaki model no. <small>Note: 3</small>	Center radius R mm	Side	Material grade	Color	Angle
①	PR-LLPC-R600W-IN30	600	Inside	10-100	White	30°
②	PR-LLPC-R600W-OUT30		Outside			
①	PR-LLPC-R600G-IN30	600	Inside	10-301	Green	30°
②	PR-LLPC-R600G-OUT30		Outside			

Note: 1. Made-to-order products.  
2. A custom base may be available upon request.  
3. The product with the above model number is a curved plastic rail with an angle of 30°. Please add the number of rails as necessary.

5-countersunk for M8 cap bolt  
Countebore 11 mm in depth

22.5°

25

50

22.5°

18°

18°

18°

18°

R600

22.5°

25

50

Hole for drainage  
6- $\phi$  13

Hole for mounting in detail  
(JIS narrow flat washer should be used)

10

19

27

Cross section of  
curved plastic rail of carry-way  
X - X'

73

45

29

17

12

18

12

18.5

25

7.5

65.5

9

Tsubaki model no.	Material grade	Color	Operating temperature range °C
PR-WT3085R600C-W	10-100M9	White	-20 to 60
PR-WT3085R600C-CNO	SJ-CNO	Purple	-20 to 80

Note: 1. Made-to-order products.  
2. Material grade: SJ-CNO (special polyamide) must be used under dry conditions.  
3. The dimension for mounting has changed to the dimension for JIS small plain washer, as of April, 2020.

Technical drawing of a curved plastic rail. The main view shows a quarter-circle arc with a radius of  $R600$ . The arc is divided into four segments, each with a central angle of  $22.5^\circ$ . The total arc length is  $70$  mm. The rail has a thickness of  $25$  mm. The mounting holes are countersunk for M8 cap bolts, with a countebore of  $11$  mm in depth. The cross-section Y-Y' shows a rectangular profile with a width of  $42$  mm and a height of  $18.5$  mm. The mounting hole has a diameter of  $\phi 17$  mm and a depth of  $56$  mm. The cross-section Z-Z' shows a rectangular profile with a width of  $10$  mm and a height of  $17$  mm. The mounting hole has a diameter of  $\phi 19$  mm and a depth of  $27$  mm. The text indicates that the hole for mounting in detail (JIS narrow flat washer should be used).

Tsubaki model no.	Material grade	Color	Operating temperature range °C
PR-WT3085R600R-W	10-100M9	White	-20 to 60
PR-WT3085R600R-CNO	SJ-CNO	Purple	-20 to 80

Note: 1. Made-to-order products.  
2. Material grade: SJ-CNO (special polyamide) must be used under dry conditions without lubrication.  
3. The dimension for mounting has changed to the dimension for JIS small plain washer, as of April, 2020.

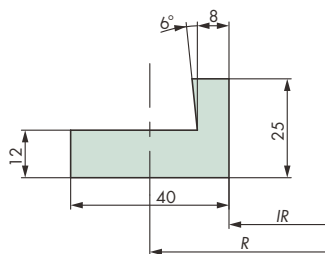
Diagram illustrating the minimum distance between two vertical rods. The dimension is labeled as Min. 12.



# Plastic Rails

## Other Rails

### ■ Curved Plastic Rails for RSP60-CU/RSP-PO12SB

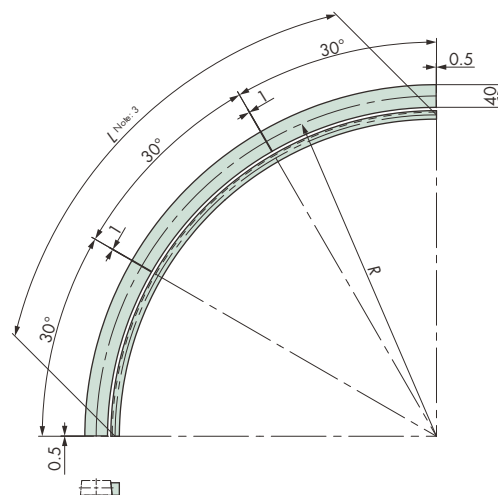
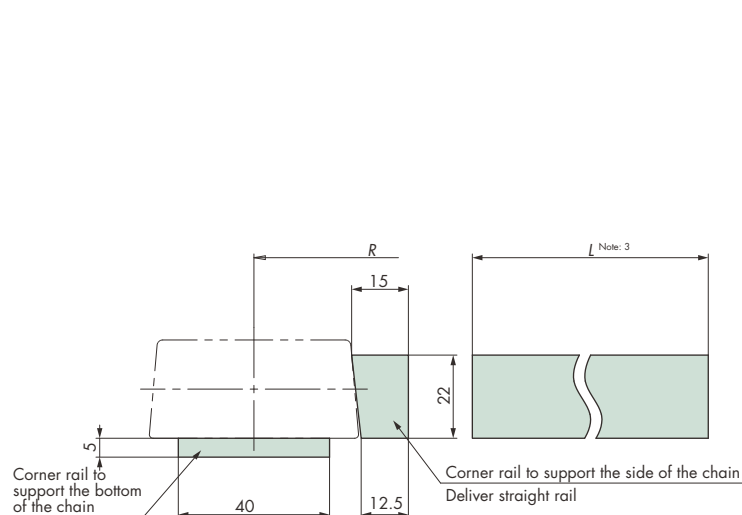


Tsubaki model no.	Material grade	Color	Center radius <i>R</i> mm	<i>IR</i>	Angle	Operating temperature range °C
PR-12SBR60030-W	10-100	White	600	577	30°	-20 to 60
PR-12SBR60030-G	10-301	Green				
PR-12SBR80030-W	10-100	White	800	777		
PR-12SBR80030-G	10-301	Green				
PR-12SBR100030-W	10-100	White	1000	977		
PR-12SBR100030-G	10-301	Green				
PR-12SBR120030-W	10-100	White	1200	1177		
PR-12SBR120030-G	10-301	Green				

Note: Made-to-order products.

### ■ Curved Plastic Rails for TP-50UNS

There are two kinds of rails, one to support the bottom and the other to support the sides of the chain.



#### • Plastic rail for bottom

Tsubaki model no.	Center radius R mm	Material grade	Color	Angle	Operating temperature range °C
PR-5UNKR55030-W	550	10-100	White	30°	-20 to 60
PR-5UNKR55030-G		10-301	Green		
PR-5UNKR60030-W	600	10-100	White		
PR-5UNKR60030-G		10-301	Green		
PR-5UNKR80030-W	800	10-100	White		
PR-5UNKR80030-G		10-301	Green		
PR-5UNKR100030-W	1000	10-100	White		
PR-5UNKR100030-G		10-301	Green		
PR-5UNKR120030-W	1200	10-100	White		
PR-5UNKR120030-G		10-301	Green		
PR-5UNKR150030-W	1500	10-100	White		
PR-5UNKR150030-G		10-301	Green		

#### • Plastic rail for side

Tsubaki model no.	Material grade	Color	$L$ <sup>Note: 3</sup> mm	Angle	Operating temperature range °C	Remarks
PR-5UNSR55090-W	10-100	White	815	90°	-20 to 60	For R550
PR-5UNSR55090-G	10-301	Green				
PR-5UNSR60090-W	10-100	White	900			For R600
PR-5UNSR60090-G	10-301	Green				
PR-5UNSR80090-W	10-100	White	1210			For R800
PR-5UNSR80090-G	10-301	Green				
PR-5UNSR100090-W	10-100	White	1530			For R1000
PR-5UNSR100090-G	10-301	Green				
PR-5UNSR120090-W	10-100	White	1840			For R1200
PR-5UNSR120090-G	10-301	Green				
PR-5UNSR150090-W	10-100	White	2320			For R1500
PR-5UNSR150090-G	10-301	Green				

Note: 1. Made-to-order products.

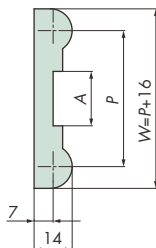
2. Mounting holes are modified upon request.

3. Plastic rails for side guides are manufactured longer than standard nominal length. Cut as necessary for use.



## Other Rails

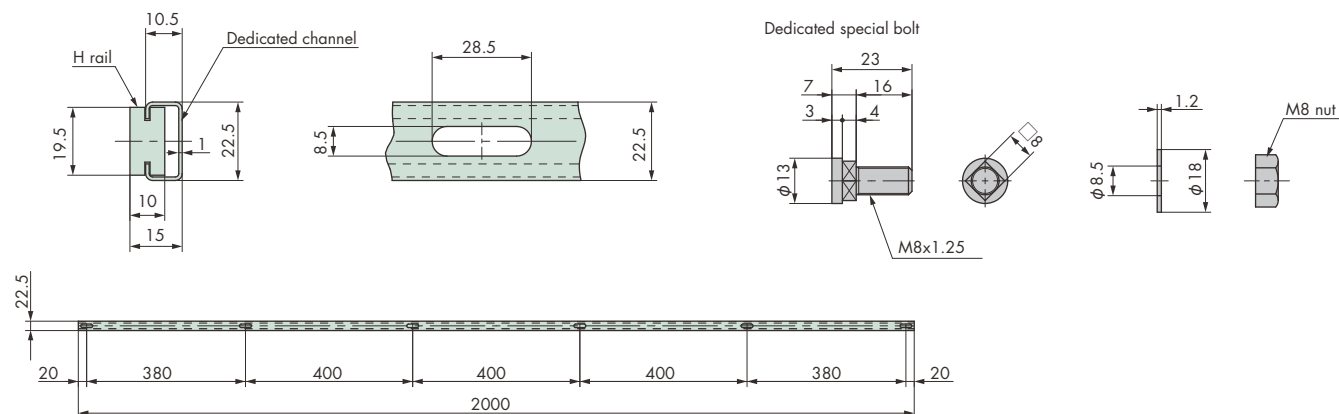
## ■ B Rails



Tsubaki model no.	P	W	A	Length m	Material grade	Color	Operating temperature range °C
PR-B40-W-2M	40	56	20	2	10-100	White	-20 to 60
PR-B40-G-2M					10-301	Green	
PR-B50-W-2M	50	66	20		10-100	White	
PR-B50-G-2M					10-301	Green	
PR-B65-W-2M	65	81	23		10-100	White	
PR-B65-G-2M					10-301	Green	

Note: Made-to-order products.

## ■ H Rails



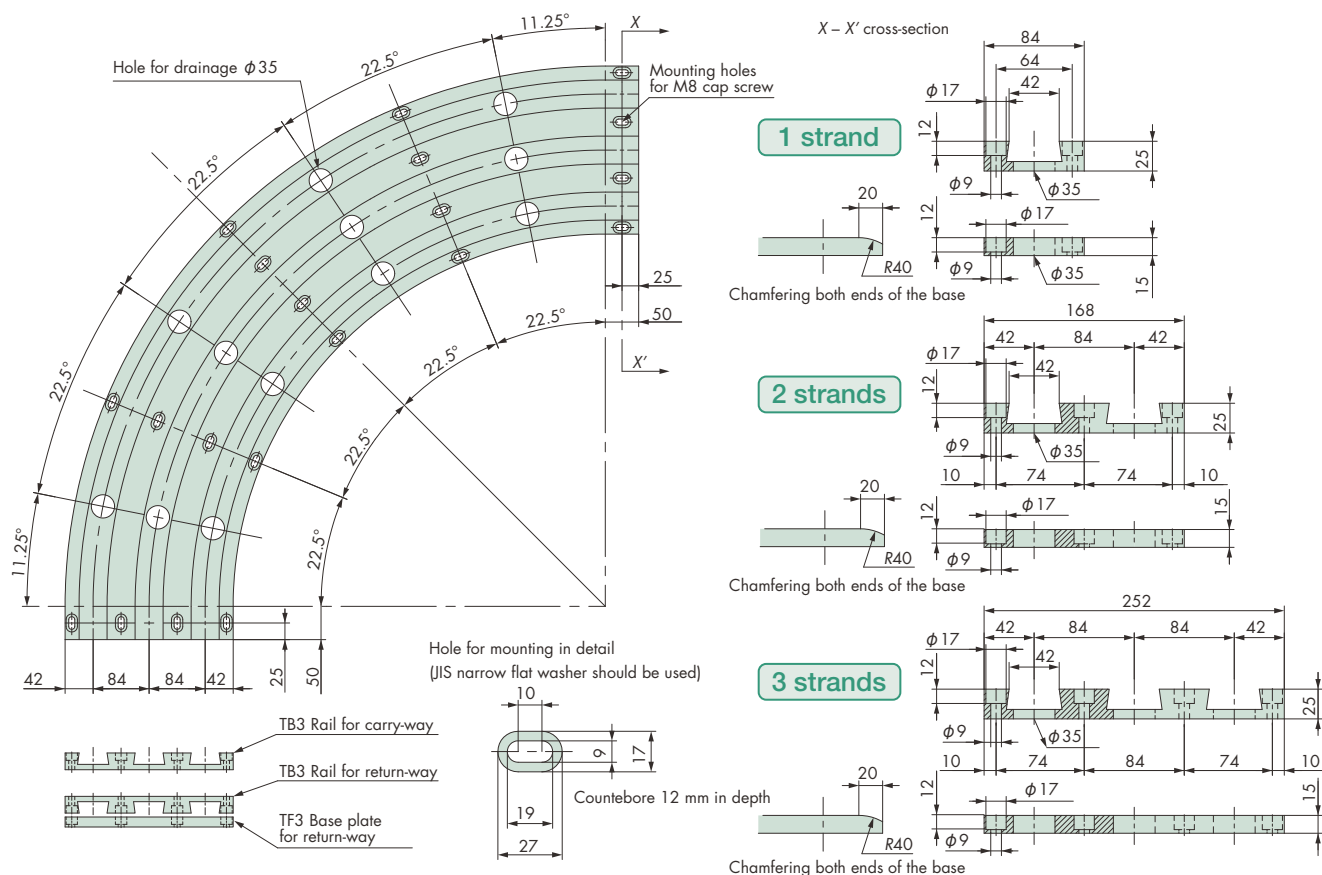
H rails				
Tsubaki model no.	Material grade	Color	Length m	Operating temperature range °C
<b>PR-HR-W-2M</b>	10-100	White	2	-20 to 60
<b>PR-HR-G-2M</b>	10-301	Green		
Dedicated channel				
Tsubaki model no.	Material	Number of slotted holes	Length m	
<b>PR-HCSS0-2M</b>	Stainless steel	0	2	
<b>PR-HCSS6-2M</b>		6		
Dedicated special bolt				
Tsubaki model no.	Material	Remarks		
<b>PR-HBNP1S</b>	Unichrome plated	With washer and nut		
<b>PR-HBSS1S</b>	Stainless steel			

Note: 1. Standard products.

2. Special bolt for H rail includes six of each bolts, nuts and washers.

## Other Rails

## ■ Curved Plastic Rails for TTUP



Chain type	No. of strands	Center radius R mm						Material grade	Color	Tsubaki model no.			Operating temperature range °C
		1st strand	2nd strand	3rd strand	4th strand	5th strand	6th strand			Carry-way/ Return-way rail	Return-way/ Base plate	Set	
TTUP826 TTUP826P TTUPH826	1	600	—	—	—	—	—	10-301	Green	PR-TB3-16-3	PR-TF3-16-3	PR-TB3-16-3SET	-20 to 60
	2	600	684	—	—	—	—			PR-TB3-26-3	PR-TF3-26-3	PR-TB3-26-3SET	
	3	600	684	768	—	—	—			PR-TB3-36-3	PR-TF3-36-3	PR-TB3-36-3SET	
	4	600	684	768	852	—	—			PR-TB3-46-3	PR-TF3-46-3	PR-TB3-46-3SET	
	5	600	684	768	852	936	—			PR-TB3-56-3	PR-TF3-56-3	PR-TB3-56-3SET	
	6	600	684	768	852	936	1020			PR-TB3-66-3	PR-TF3-66-3	PR-TB3-66-3SET	
	1	800	—	—	—	—	—			PR-TB3-18-3	PR-TF3-18-3	PR-TB3-18-3SET	
	2	800	884	—	—	—	—			PR-TB3-28-3	PR-TF3-28-3	PR-TB3-28-3SET	
	3	800	884	968	—	—	—			PR-TB3-38-3	PR-TF3-38-3	PR-TB3-38-3SET	
	4	800	884	968	1052	—	—			PR-TB3-48-3	PR-TF3-48-3	PR-TB3-48-3SET	
	5	800	884	968	1052	1136	—			PR-TB3-58-3	PR-TF3-58-3	PR-TB3-58-3SET	
	6	800	884	968	1052	1136	1220			PR-TB3-68-3	PR-TF3-68-3	PR-TB3-68-3SET	
	1	1000	—	—	—	—	—			PR-TB3-10-3	PR-TF3-10-3	PR-TB3-10-3SET	
	2	1000	1084	—	—	—	—			PR-TB3-20-3	PR-TF3-20-3	PR-TB3-20-3SET	
	3	1000	1084	1168	—	—	—			PR-TB3-30-3	PR-TF3-30-3	PR-TB3-30-3SET	
	4	1000	1084	1168	1252	—	—			PR-TB3-40-3	PR-TF3-40-3	PR-TB3-40-3SET	
	5	1000	1084	1168	1252	1336	—			PR-TB3-50-3	PR-TF3-50-3	PR-TB3-50-3SET	
	6	1000	1084	1168	1252	1336	1420			PR-TB3-60-3	PR-TF3-60-3	PR-TB3-60-3SET	

Note: 1. Made-to-order products.

2. The set model number is assigned to the set product comprising three components: the rails for the carry and return ways and the base for the return-way.

3. The products including rails for TTUP1143 (top plate width of 114.3 mm) and other specifications such as for multiple number of strands, different size and colors are available upon request.

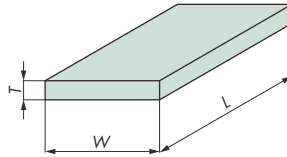
4. Contact a Tsubaki representative for special specifications such as for super-high-speed operation.

5. Curved plastic rails are delivered with divided units by an angle of  $30^\circ$  or  $45^\circ$ , depending on its shape.

6. The shapes of both inlet and outlet of the base plate have changed to the shapes of round-chamfering as of April 2020.

## Standardized Product

## ■ Sheet—Standard Product



Size mm T: Thickness x W: Width x L: Length		Material grade (Feature: Color)			Manufacturing method	Operating temperature range °C			
		10-100 (Standard: White)	10-301 (Standard: Green)	10-806 (Electrostatic preventive: Black)					
		Tsubaki model no.							
1	×	1000	×	2000	<b>PR-ST1-1000-W-2000</b>	PR-ST1-1000-G-2000	PR-ST1-1000-B-2000	Skiving Note: 5	-20 to 60
2	×	1000	×	2000	<b>PR-ST2-1000-W-2000</b>	PR-ST2-1000-G-2000	PR-ST2-1000-B-2000		
3	×	1000	×	2000	<b>PR-ST3-1000-W-2000</b>	<b>PR-ST3-1000-G-2000</b>	<b>PR-ST3-1000-B-2000</b>		
4	×	1000	×	2000	<b>PR-ST4-1000-W-2000</b>	<b>PR-ST4-1000-G-2000</b>	PR-ST4-1000-B-2000		
5	×	1000	×	2000	<b>PR-ST5-1000-W-2000</b>	<b>PR-ST5-1000-G-2000</b>	<b>PR-ST5-1000-B-2000</b>		
6	×	1000	×	2000	<b>PR-ST6-1000-W-2000</b>	<b>PR-ST6-1000-G-2000</b>	<b>PR-ST6-1000-B-2000</b>		
8	×	1000	×	2000	<b>PR-ST8-1000-W-2000</b>	PR-ST8-1000-G-2000	PR-ST8-1000-B-2000	Press Note: 2	
10	×	1000	×	2000	A Note: 3 <b>PR-ST10-1000-W-2000A</b>	<b>PR-ST10-1000-G-2000</b>	<b>PR-ST10-1000-B-2000</b>		
10	×	1000	×	2000	B Note: 3 PR-ST10-1000-W-2000B				
12	×	1000	×	2000	A Note: 3 <b>PR-ST12-1000-W-2000A</b>	<b>PR-ST12-1000-G-2000</b>	<b>PR-ST12-1000-B-2000</b>		
12	×	1000	×	2000	B Note: 3 PR-ST12-1000-W-2000B				
15	×	1000	×	2000	A Note: 3 <b>PR-ST15-1000-W-2000A</b>	<b>PR-ST15-1000-G-2000</b>	<b>PR-ST15-1000-B-2000</b>		
15	×	1000	×	2000	B Note: 3 PR-ST15-1000-W-2000B				
20	×	1000	×	2000	<b>PR-ST20-1000-W-2000</b>	<b>PR-ST20-1000-G-2000</b>	<b>PR-ST20-1000-B-2000</b>		
25	×	1000	×	2000	<b>PR-ST25-1000-W-2000</b>	<b>PR-ST25-1000-G-2000</b>	PR-ST25-1000-B-2000		
30	×	1000	×	2000	<b>PR-ST30-1000-W-2000</b>	<b>PR-ST30-1000-G-2000</b>	PR-ST30-1000-B-2000		
35	×	1000	×	2000	PR-ST35-1000-W-2000	PR-ST35-1000-G-2000	PR-ST35-1000-B-2000		
40	×	1000	×	2000	<b>PR-ST40-1000-W-2000</b>	PR-ST40-1000-G-2000	PR-ST40-1000-B-2000		
45	×	1000	×	2000	<b>PR-ST45-1000-W-2000</b>	PR-ST45-1000-G-2000	PR-ST45-1000-B-2000		
50	×	1000	×	2000	<b>PR-ST50-1000-W-2000</b>	PR-ST50-1000-G-2000	PR-ST50-1000-B-2000		
55	×	1000	×	2000	PR-ST55-1000-W-2000				
60	×	1000	×	2000	PR-ST60-1000-W-2000	PR-ST60-1000-G-2000	PR-ST60-1000-B-2000		
70	×	1000	×	2000	PR-ST70-1000-W-2000	PR-ST70-1000-G-2000			
80	×	1000	×	2000	PR-ST80-1000-W-2000	PR-ST80-1000-G-2000			
90	×	1000	×	2000	PR-ST90-1000-W-2000	PR-ST90-1000-G-2000			
100	×	1000	×	2000	PR-ST100-1000-W-2000	PR-ST100-1000-G-2000			
8	×	1220	×	3000	<b>PR-ST8-1220-W-3000</b>	PR-ST8-1220-G-3000	PR-ST8-1220-B-3000		
10	×	1220	×	3000	<b>PR-ST10-1220-W-3000</b>	<b>PR-ST10-1220-G-3000</b>	PR-ST10-1220-B-3000		
12	×	1220	×	3000	<b>PR-ST12-1220-W-3000</b>	<b>PR-ST12-1220-G-3000</b>	PR-ST12-1220-B-3000		
15	×	1220	×	3000	<b>PR-ST15-1220-W-3000</b>	<b>PR-ST15-1220-G-3000</b>	PR-ST15-1220-B-3000		
20	×	1220	×	3000	<b>PR-ST20-1220-W-3000</b>	<b>PR-ST20-1220-G-3000</b>	PR-ST20-1220-B-3000		
25	×	1220	×	3000	<b>PR-ST25-1220-W-3000</b>	<b>PR-ST25-1220-G-3000</b>	PR-ST25-1220-B-3000		
30	×	1220	×	3000	<b>PR-ST30-1220-W-3000</b>	<b>PR-ST30-1220-G-3000</b>	PR-ST30-1220-B-3000		
35	×	1220	×	3000	PR-ST35-1220-W-3000	PR-ST35-1220-G-3000	PR-ST35-1220-B-3000		
40	×	1220	×	3000	PR-ST40-1220-W-3000	PR-ST40-1220-G-3000	PR-ST40-1220-B-3000		
45	×	1220	×	3000	PR-ST45-1220-W-3000	PR-ST45-1220-G-3000	PR-ST45-1220-B-3000		
50	×	1220	×	3000	PR-ST50-1220-W-3000	PR-ST50-1220-G-3000	PR-ST50-1220-B-3000		
60	×	1220	×	3000	PR-ST60-1220-W-3000	PR-ST60-1220-G-3000	PR-ST60-1220-B-3000		
70	×	1220	×	3000	PR-ST70-1220-W-3000	PR-ST70-1220-G-3000	PR-ST70-1220-B-3000		
80	×	1220	×	3000	PR-ST80-1220-W-3000	PR-ST80-1220-G-3000	PR-ST80-1220-B-3000		
90	×	1220	×	3000	PR-ST90-1220-W-3000	PR-ST90-1220-G-3000			
100	×	1220	×	3000	PR-ST100-1220-W-3000	PR-ST100-1220-G-3000			

Note: 1. Tsubaki model no. in boldface are standard products. Tsubaki model no. in normal face are made-to-order products.

2. The products are made by press working and their sizes as shown are nominal values. (Their thickness varies.)

3. The following two types of processing are available for standard products (10-100) (color: white) with thicknesses of 10/12/15 x W1000 x L2000.

A: Pressed products

B: Finished products (Thickness sides are finished.)

4. Depending on the size, wear resistance (10-605SS) (color: yellow) and (10-365CP) (color: olive green) can be manufactured.

5. It is sliced from a thick material and is warped and distorted.

# Plastic Rails

## Standardized Product

### Round Bar

Diameter mm	Unit mass kg/m	Material grade (Feature: Color)					Operating temperature range °C
		10-100EX (Standard extrusions: White)	10-301EX (Standard extrusions: Green)	10-806 (Electrostatic preventive: Black)	10-605SS (Wear resistant: Yellow)	10-365CP (Wear resistant: Greenish brown)	
		Tsubaki model no.					
10	0.08	PR-MR10-W-1M	PR-MR10-G-1M	PR-MR10-B-1M	PR-MR10-Y-1M	PR-MR10-CP-1M	-20 to 60
15	0.18	PR-MR15-W-1M	PR-MR15-G-1M	PR-MR15-B-1M	PR-MR15-Y-1M	PR-MR15-CP-1M	
20	0.31	PR-MR20-W-1M	PR-MR20-G-1M	PR-MR20-B-1M	PR-MR20-Y-1M	PR-MR20-CP-1M	
25	0.49	PR-MR25-W-1M	PR-MR25-G-1M	PR-MR25-B-1M	PR-MR25-Y-1M	PR-MR25-CP-1M	
30	0.71	PR-MR30-W-1M	PR-MR30-G-1M	PR-MR30-B-1M	PR-MR30-Y-1M	PR-MR30-CP-1M	
35	0.96	PR-MR35-W-1M	PR-MR35-G-1M	PR-MR35-B-1M	PR-MR35-Y-1M	PR-MR35-CP-1M	
40	1.26	PR-MR40-W-1M	PR-MR40-G-1M	PR-MR40-B-1M	PR-MR40-Y-1M	PR-MR40-CP-1M	
45	1.59	PR-MR45-W-1M	PR-MR45-G-1M	PR-MR45-B-1M	PR-MR45-Y-1M	PR-MR45-CP-1M	
50	1.96	PR-MR50-W-1M	PR-MR50-G-1M	PR-MR50-B-1M	PR-MR50-Y-1M	PR-MR50-CP-1M	
55	2.38	PR-MR55-W-1M	PR-MR55-G-1M	PR-MR55-B-1M	PR-MR55-Y-1M	PR-MR55-CP-1M	
60	2.83	PR-MR60-W-1M	PR-MR60-G-1M	PR-MR60-B-1M	PR-MR60-Y-1M	PR-MR60-CP-1M	
65	3.32	PR-MR65-W-1M					
70	3.85	PR-MR70-W-1M	PR-MR70-G-1M	PR-MR70-B-1M			
75	4.42	PR-MR75-W-1M					
80	5.02	PR-MR80-W-1M	PR-MR80-G-1M	PR-MR80-B-1M			
85	5.67	PR-MR85-W-1M					
90	6.36	PR-MR90-W-1M	PR-MR90-G-1M	PR-MR90-B-1M			
100	7.85	PR-MR100-W-1M	PR-MR100-G-1M	PR-MR100-B-1M			
110	9.50	PR-MR110-W-1M					
120	11.30	PR-MR120-W-1M					
130	13.27	PR-MR130-W-1M					
140	15.39	PR-MR140-W-1M					
150	17.66	PR-MR150-W-1M					
160	20.01	PR-MR160-W-1M					
180	26.01	PR-MR180-W-1M					
200	31.40	PR-MR200-W-1M					
250	49.06	PR-MR250-W-1M					

Note: 1. Tsubaki model no. in boldface are standard products. Tsubaki model no. in normal face are made-to-order products.

2. Sizes (outside diameter, length, material grade) other than those shown above can be manufactured upon request.

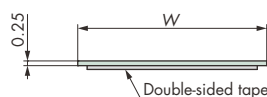
3. Circular plates with a thickness up to 150 mm are used to manufacture products with a diameter over  $\phi 250$ .

4. Standard length is 1 m.

5. Machining product.

### Wear Tape

Wear tape is a special tape made of ultra- high molecular weight polyethylene (UHMW-PE) tape with an adhesive.

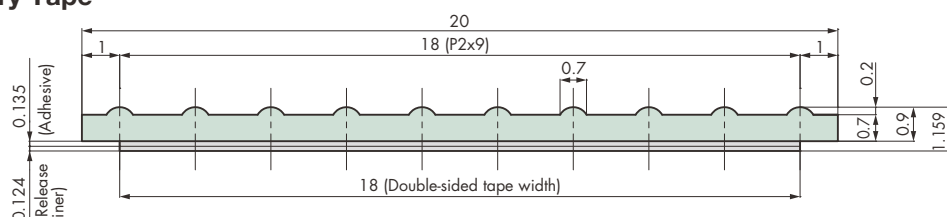


Tsubaki model no.	Width	Thickness	Coil length m	Material grade	Color	Operating temperature range °C
<b>PR-WT15-20M</b>	15	0.25	20	10-100	White	1 to 30
<b>PR-WT20-20M</b>	20					
<b>PR-WT25-20M</b>	25					
<b>PR-WT30-20M</b>	30					
<b>PR-WT40-20M</b>	40					
<b>PR-WT50-20M</b>	50					
<b>PR-WT75-20M</b>	75					
<b>PR-WT100-20M</b>	100					
<b>PR-WT150-20M</b>	150	0.25	20	10-100	White	1 to 30
<b>PR-WT300-20M</b>	300					

Note: 1. Standard products.

2. Sizes other than those shown above and electrostatic preventive material, 10-806 (color: black) may be available upon request. Contact a Tsubaki representative for more information.

### White Slippery Tape



Tsubaki model no.	Material	Color	Operating temperature range °C	Length m
PR-WS-20M	High-density polyethylene	White	1 to 30	20
PR-WS-200M				200

Note: Made-to-order products.