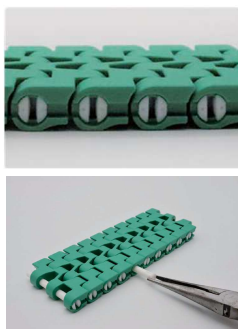


### Disconnecting / Connecting

#### ◆ Disconnecting and connecting chain with slit pins

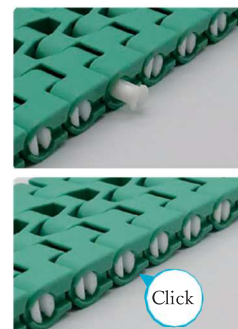
##### ● Disconnecting

- ① Holds the head of the slit pin using plier and pulls out. The direction of the slit should be vertical when pulling out.



##### ● Connecting

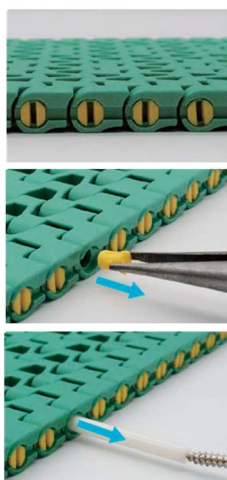
- ① Places the both ends of the chain together and inserts the slit pin from one side of the chain.
- ② Inserts the slit pin until click sounds.
- ③ Double check that the slit pin is placed correctly.



#### ◆ Disconnecting and connecting chain with plug retention system

##### ● Disconnecting

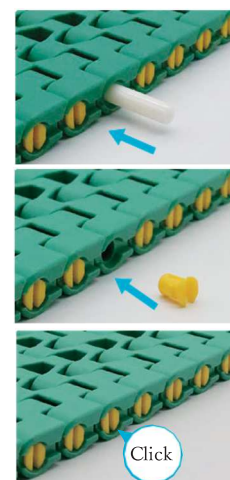
- ① Holds the head of the plug using plier and pulls out. The direction of the slit should be vertical when pulling out.



- ② Using a threaded head screwdriver, screw it into the center hole (1mm diameter) of the pin, and pull out the pin to disassemble the chain.

##### ● Connecting

- ① Places both ends of the chain together and inserts the pin from one side of the chain.
- ② Inserts the plug until click sounds to cover the inlet.
- ③ Double check that the plug is placed correctly.



Note: Use only the attached or dedicated pin or slit pin for connecting chain.

## For your safety when using the chain

### ⚠ Warnings

To avoid danger, observe the following rules.

- Do not use chain or chain accessories for any purpose other than their originally intended use.
- Never perform additional work on chain.
  - Do not clean chain with acidic or alkaline substances. These may cause cracking.
- When replacing a worn or damaged part, do not replace just the worn or damaged part. Replace all parts with new parts. The chain may break during operation, leading to a risk of severe injury.
- Strictly observe the general guidelines listed in Section 1, Chapter 1, 2nd Edition of the Japanese Occupational Safety and Health Regulations as well as rules and regulations concerning occupational safety and health in your region/country. Always install safety equipment (safety covers, etc.) on chain and sprockets.
- Observe following instructions when installing, removing, inspecting, maintaining and oiling chain.
  - Perform the work as instructed in the manual, catalog or other documentation that was provided with the product.
  - Be sure to turn off the power switch and to take measure to prevent conveyor from starting accidentally before starting these tasks.
  - Secure the chain and parts to prevent them from moving freely.

- Be sure to wear working clothes and protective gears such as safety glasses, gloves, safety shoes and etc. that are appropriate for the work.
- Only experienced personnel should perform chain replacement.

### ⚠ Cautions

To prevent accidents, observe the following rules.

- Understand the structure and specifications of the chain that you are handling.
- Inspect the chain to make sure no damage had occurred during delivery before installing.
- Inspect and maintain chain and sprockets at regular intervals.
- Chain strength varies by manufacturer. Only Tsubaki products should be used when chain is selected using Tsubaki catalog.
- Start and stop the chain gradually, and do not subject it to sudden impact.
- Do not apply initial tension to the chain.
- When using plastic pin type of chain under wet conditions, make sure that the temperature does not exceed 60°C.
- Do not use plastic chain near open flame or under the ambient temperature over the permissive range. Plastic chain is flammable and may generate hazardous gas.