

Cam Clutch Installation and Maintenance Instruction

BSEU25, BSEU40, BSEU70, BSEU90



Thank you for buying Cam Clutch products.

Before installing or working on the product, confirm it is the correct size by checking its label and make sure you have the complete set of parts. If any part is missing, contact your distributor immediately.



This manual should be considered as an essential part of the unit and remain with the unit when redistributed.

SAFETY

- Your Cam Clutch is a high quality, sophisticated unit which should be handled by experienced engineers only.
 - For safety purposes, make sure this manual is always easily accessible by the user.
- Safety precautions in this manual are classified into two categories: "WARNING" and "CAUTION". These are defined as follows:

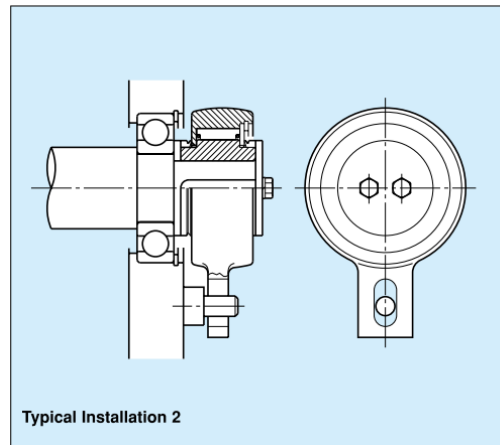
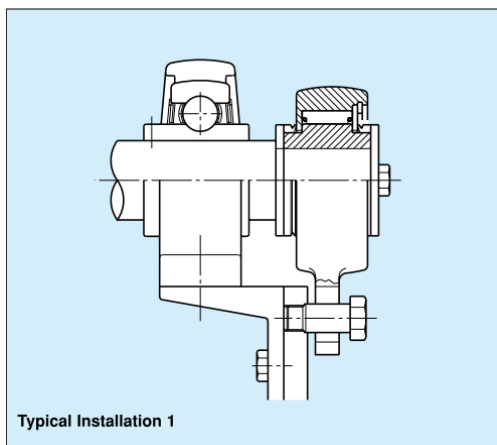
	WARNING	Death or serious injury may result from misusing the product without following the instructions.
	CAUTION	Minor or moderate injury, as well as damage to the product may result from misusing the product without following the instructions.

Notice that although categorized under "CAUTION", subjects discussed may lead to serious results depending on the situation.

 WARNING
<ul style="list-style-type: none"> • Make sure turning forces are not applied to Cam Clutch or turning shaft of the equipment when conducting inspection or maintenance. Pay special attention to the back stopping application to prevent accidents. • Frequent starting and stopping will apply excessive force on the mounting. Verify mounting strength. • Inaccurate installation and mounting, various load conditions, wear and tear of parts, and life expectancy can all affect the performance of a Cam Clutch. Inspect and maintain periodically and install a safety device on your equipment. • Comply with Ordinance on Labor Safety and Hygiene 2-1-1 general standards.
 CAUTION
<ul style="list-style-type: none"> • To ensure safety and optimal performance, carefully read this instruction manual in its entirety. • Confirm rotational direction prior to installing.

■ Installation

1. We recommend using a shaft tolerance of h7 or h8 for Cam Clutch installation.
2. ISO R773 (DIN6885.1) keyway is standard.
3. Before installation, verify that the direction of rotation of inner race of the Cam Clutch (shown by the arrow on the inner race) is the same as the direction of rotation of the conveyor.
4. When inserting the Cam Clutch on the shaft, apply pressure only on the surface of the inner race with a soft hammer. Never strike the Cam Clutch with a steel hammer or apply unnecessary impact loads.
5. Always use a parallel key for installation onto the shaft and then fix the Cam Clutch to the shaft with the end plate. Never use tapered key which give the damage to Cam Clutch.
6. Use the frame or pin to eliminate outer race rotation.
7. Set 0.5 mm clearance between the torque arm and frame (torque arm stopper) or long slit in the torque arm and the pin. If the torque arm is rigidly mounted, it will apply a load to Cam Clutch which may eventually damage it.
8. The Cam Clutch is pre-lubricated with low temperature grease before shipment and is ready for installation and operation. No lubrication maintenance is required. The ambient operational temperature range is -40°C to 50°C . However, the maximum temperature should be determined depending on the rotating speed of the inner race. Further, if the rotating speed is low, a higher ambient operational temperature is allowable. Please consult Tsubaki for more detail.
9. In case of outdoor usage, installation of a protective cover is recommended to minimize the following factor.
 - Excess heat by direct sunlight.
 - Rust and sealing deterioration by weather (ultraviolet rays, rain, sea breeze, etc.)



■ Warranty

Tsubakimoto Chain Co.: hereinafter referred to as "Seller"

Customer: hereinafter referred to as "Buyer"

Goods sold or supplied by Seller to Buyer, hereinafter referred to as "Goods".

1. Warranty period without charge

18 months effective the date of shipment or 12 months effective the first use of Goods, including installation of Goods to Buyer's equipment or machines - whichever comes first.

2. Warranty coverage

Should any damage or problem with the Goods arise within the warranty period, given that the Goods were operated and maintained under instructions provided in the manual, Seller would repair and replace at no charge once the Goods are returned to Seller. The following are excluded from the warranty.

- 1) Any costs related to removing Goods from the Buyer's equipment or machines to repair or replace parts.
- 2) Costs to transport Buyer's equipment or machines to the Buyer's repair shop.
- 3) Costs to reimburse any profit loss due to any repair or damage and consequential losses caused by the Buyer.

3. Warranty with charge

Seller will charge any investigation and repair of Goods caused by:

- 1) Improper installation by failing to follow the instruction manual.
- 2) Insufficient maintenance or improper operation by the Buyer.
- 3) Incorrect installation of Goods to other equipment or machines.

4) Any modifications or alterations of Goods by the Buyer.

5) Any repair by engineers other than the Seller or those designated by the Seller.

6) Operation in an inappropriate environment not specified in the manual.

7) Force Majeure or forces beyond the Seller's control such as natural disasters and injustice done by a third party.

8) Secondary damage or problem incurred by the Buyer's equipment or machines.

9) Defected parts supplied or specified by the Buyer.

10) Incorrect wiring or parameter setting by the Buyer.

11) The end-of-life cycle of the Goods under normal usage.

12) Loss or damage not liable to the Seller.

4. Dispatch Service

Service to dispatch a Seller's engineer to investigate, adjust or trial test Seller's Goods is at the Buyer's expense.

5. Disclaimer

1) In our constant efforts to improve, Tsubakimoto Chain Co. may change the contents of this document without notice.

2) Considerable effort has been made to ensure that the contents of this document are free from errors. However, Tsubakimoto Chain Co. makes no warranties with respect to the accuracy of information described herein. In the meantime, we would appreciate comments or reports on any inaccuracies or omissions found in this document to help us



TSUBAKIMOTO CHAIN CO.

1-1, Kohtari-Kuresumi, Nagaokakyo

Kyoto 617- 0833, Japan

Website: <http://tsubakimoto.com/>

Global Associated Partners:

U.S. Tsubaki Power Transmission, LLC

<http://www.ustsubaki.com/>

Tsubakimoto Singapore Pte. Ltd.

<http://tsubaki.sg/>

Tsubakimoto Europe B.V.

<http://tsubaki.eu/>

Tsubaki of Canada Limited

<http://tsubaki.ca/>

Taiwan Tsubakimoto Co.

<http://tsubakimoto.com.tw/>

Tsubakimoto U.K. Ltd.

<http://tsubaki.eu/>

Tsubaki Australia Pty. Limited

<http://tsubaki.com.au/>

Tsubakimoto Chain (Shanghai) Co., Ltd.

<http://tsubaki.cn/>

Tsubakimoto Korea Co., Ltd..

<http://tsubakimoto-tck.co.kr/>