

# **TSUBAKI Plastic Top Chain**

**TPUMF1200-T  
TPUMF1200-TB**

**Top Chains**



# TPUMF1200-T and TPUMF1200-TB

## in a new lineup of our plastic top chain series

Presenting new plastic top chains for food and food tray conveyance in a variety of industries including noodle making.

Features a chain pitch of 19.05 mm, half that of the previous TPU series at 38.1 mm.

This is effective for **saving space at transfers** between conveyors.

Feature

1

### Chains can be selected for conveyance conditions

Sideflexing chain with a flat surface

**TPUMF1200-T**



Three protrusions on the transport surface keep conveyed products from sliding

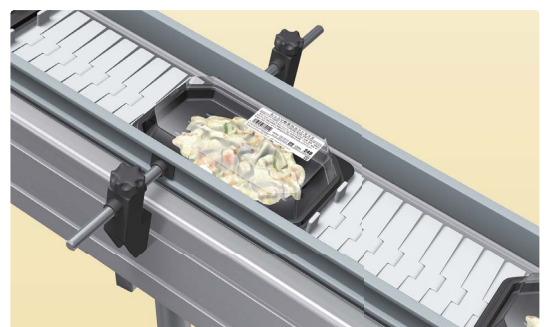
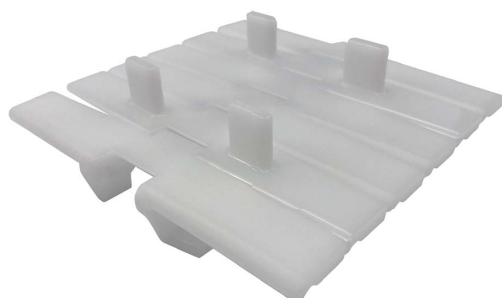
**TPUMF1200-TB**



Note: The top surface of the plates for TPUMF1200-TB has a glossy surface with no texture.

Capable of conveying products at an incline by combining TPUMF1200-T and TPUMF1200-TB with flight links

**TPUMF1200F-T**



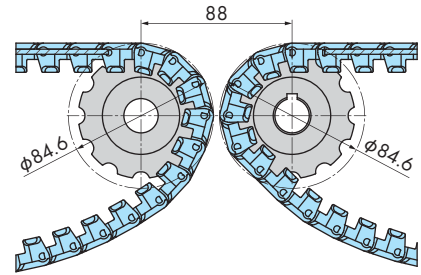
Note: The top surface of the plates and the flights of TPUMF1200F-T have a glossy surface with no texture.

Feature

2

## Short pitch reduces space for transfers between conveyors

At a chain pitch of 19.05 mm, this chain adopts half the chain pitch of the previous TPU series. This reduces dead space and facilitates smooth transfer between conveyors.

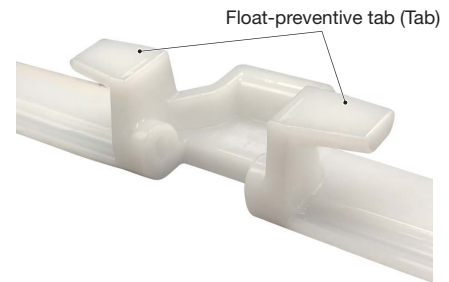


Feature

3

## Prevents floating and surface scratches with float-preventive tabs

Chain floating can be prevented at corners and on ascending and descending conveyors with the float-preventive tab (Tab). Scratches on the transport surface are also prevented by holding the return-way with the float-preventive tab (Tab) to make this chain optimal for food conveyance.

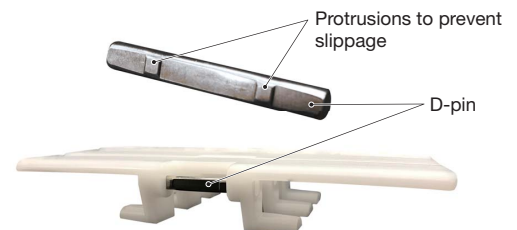


Feature

4

## Adopts a D-shaped pin to prevent pin hole breakage

The D-shaped pin has two protrusions to hold the pin in place. These protrusions are held inside the pin hole to prevent the pin from slipping out. The pin fits loosely in the pin hole, which reduces the stress on the pin hole.



Feature

5

## Complies with the Food Sanitation Act (MHLW Notification No. 370)

Standard W and low-friction/wear-resistant LFG comply with the Food Sanitation Act, Japan's Ministry of Health, Labour and Welfare notification No. 370.

Standard W also uses a material approved by the FDA, the U.S. Food and Drug Administration.

## Application Examples



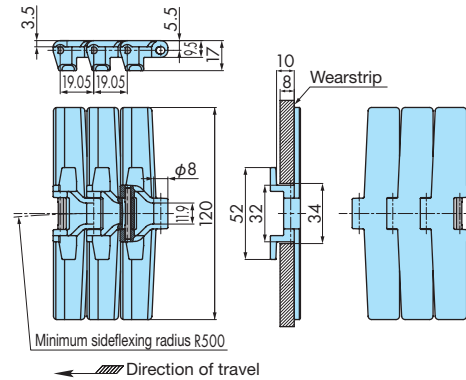
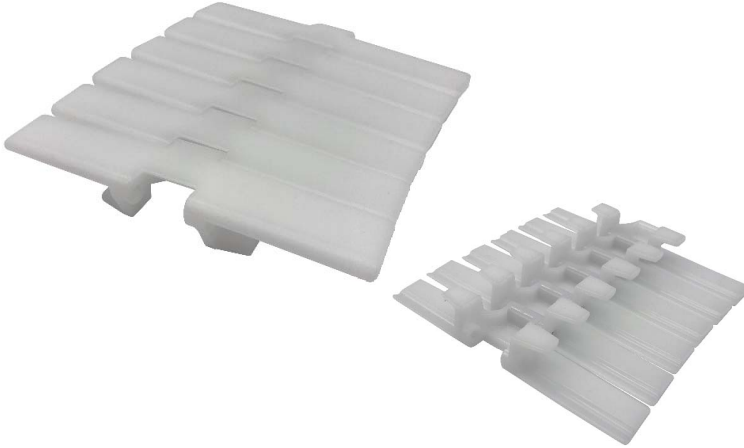
- Notes: 1. The requirements when using the chain to directly convey foods are as follows: Conformance with the Product Liability Act, the acquisition of detailed usage information for the chain, and the exchange of the safety confirmation document.  
2. These application examples are for illustrative purposes only.

# Plastic Top Chain

# TPUMF1200-T & TPUMF1200-TB (Sideflexing)

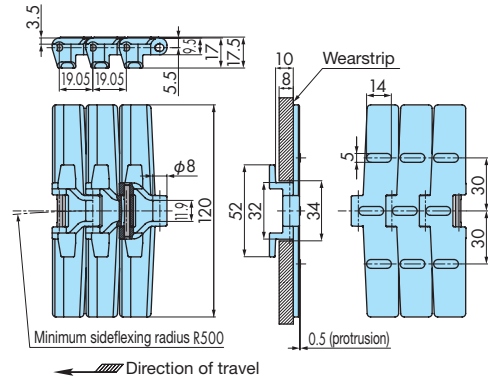
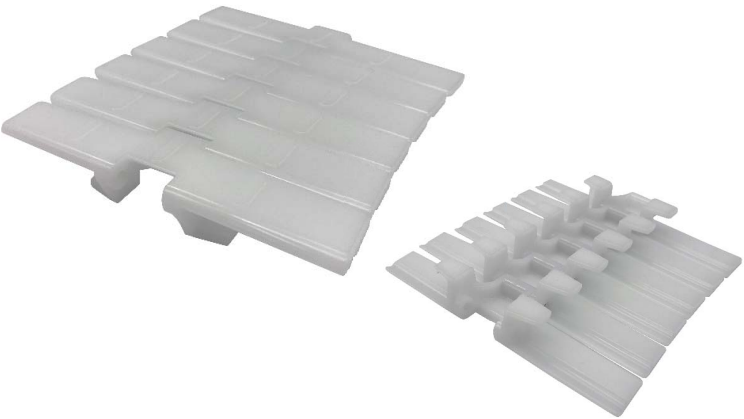
## Chain

### TPUMF1200-T



Chain Pitch mm	Backflex Radius mm	No. of links per unit
19.05	25	160

### TPUMF1200-TB



Chain Pitch mm	Backflex Radius mm	No. of links per unit
19.05	25	160

## Chain Material Table

Tsubaki Model Number	Material	Material Mark	Color	Max. Allowable Load kN {kgf}	Chain Mass kg/m	Max. Allowable Speed m/min		Operating Temperature Range °C	Pin Material	Pin Type
						With Lube	No Lube			
<b>TPUMF1200-T-W</b>	Standard	W	White	0.39 {40}	0.8	100	50	-20 to 80	SUS304	D-pin
TPUMF1200-T-LFG	Low friction, wear resistant	LFG	Green					-20 to (65) 80		
<b>TPUMF1200-TB-W</b>	Standard	W	White					-20 to 80		
TPUMF1200-TB-LFG	Low friction, wear resistant	LFG	Green					-20 to (65) 80		

- Notes: 1. Tsubaki model numbers in bold text are standard products. Tsubaki model numbers in non-bold text are made-to-order products (RFQ).  
 2. The chain materials in the above table are not equipped with an antistatic feature.  
 3. The numbers given in parentheses for the operating temperature range in the chain specifications table are for wet conditions.  
 4. The top surface of the plates for TPUMF1200-TB has a glossy surface with no texture.  
 5. The requirements when using the chain to directly convey foods are as follows: Conformance with the Product Liability Act, the acquisition of detailed usage information for the chain, and the exchange of the safety confirmation document.

## Model Numbering

Chain type	Top Plate Width	Tab	Material Mark	Number of Links	Unit
<b>TPUMF</b>	<b>1200</b>	<b>TB</b>	<b>W</b>	<b>80</b>	<b>L</b>
	1200: 120 mm	T: With tabs, flat top surface of plate TB: With tabs, three protrusions on top surface of plate	Note 2	Note 3	L: Links

- Notes: 1. Do not leave any space between letters and symbols when ordering.  
 2. Confirm the chain specifications in the chain specifications table given above.  
 3. Minimum: 2L, maximum: 99999L

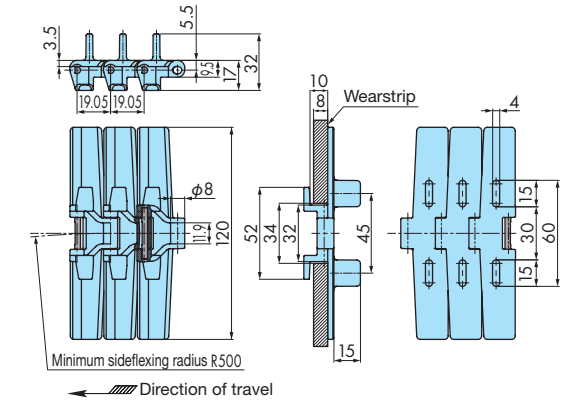
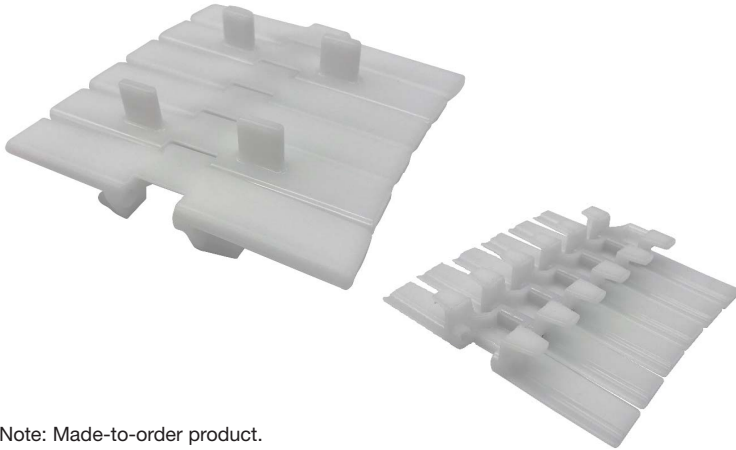
# Plastic Top Chain

## TPUMF1200F-T (Sideflexing)

### Chain

Flight links can be combined freely.

**TPUMF1200F-T**



Chain Pitch mm	Backflex Radius mm	No. of links per unit
19.05	25	160

Note: Made-to-order product.

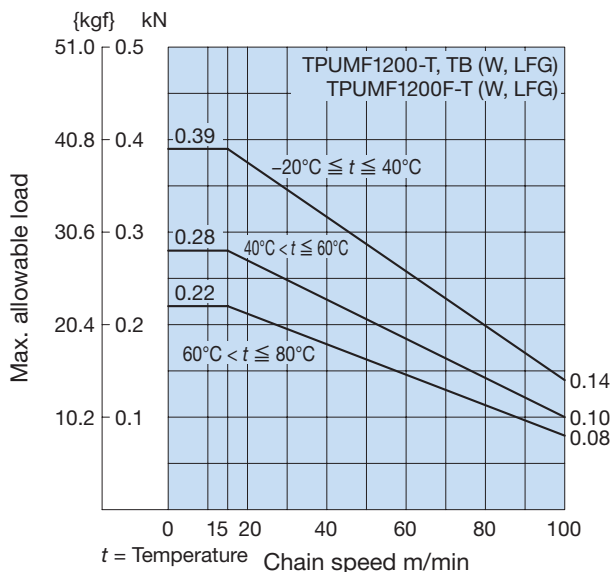
### Model Numbering

Chain type	Top Plate Width	Flight	Tab	Material Mark	Flight pitch	Number of Links	Unit
<b>TPUMF</b>	<b>1200</b> 1200: 120 mm	<b>F</b>	<b>T</b>	<b>W</b> Note 2	<b>3L</b>	<b>80</b> Note 3	<b>L</b> L: Links

T: With tabs, flat top surface of plate  
TB: With tabs, three protrusions on top surface of plate

- Notes: 1. Do not leave any space between letters and symbols when ordering.  
2. Confirm the chain specifications in the chain specifications table given to the left.  
3. Minimum: 2L, maximum: 99999L  
4. The top surface of the plates and the flights of TPUMF1200F-T have a glossy surface with no texture.

### Allowable load graph

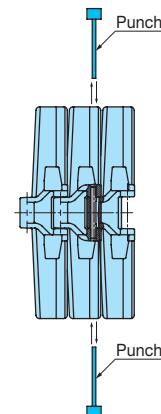


For no lube: 50 m/min or less  
For LFG: 65°C max. in wet conditions

### Disconnecting/Connecting

You can disassemble the chain from any part.  
You can also remove and insert the pin from either side of the chain.

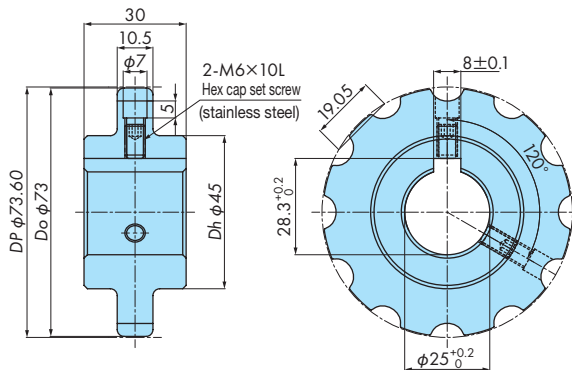
Use a punch with an outer diameter of 3 mm or less.



# Sprocket and Idler Sprocket

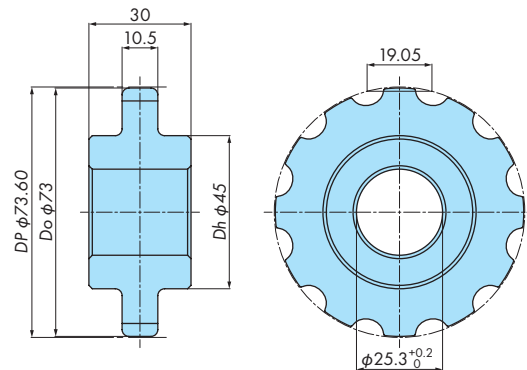
## ■ Solid sprocket

TPUMF1200T-25



## ■ Solid idler sprocket

TPUMF1200T-25-IW



Tsubaki model number	No. of Teeth	Pitch Diameter $D_p$	Outer Diameter $D_o$	Bore Shape	Bore Diameter $d$	Hub Diameter $D_h$	Approx. Mass kg	Material	
								Body	Hex Cap Set Screw
TPUMF1200T-25	12	73.60	73	Round	$\phi 25$	45	0.06	UHMW-PE (color: white)	Stainless steel
TPUMF1200T-25-IW					$\phi 25.3$				—

Notes: 1. Made-to-order product (RFQ).

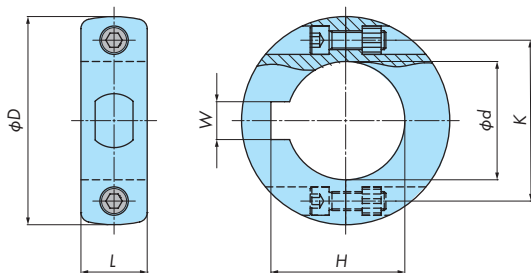
2. The operating temperature range is  $-20$  to  $60^\circ\text{C}$ .

3. These products can also be built with a different number of teeth and a different material. Contact a Tsubaki representative for details.

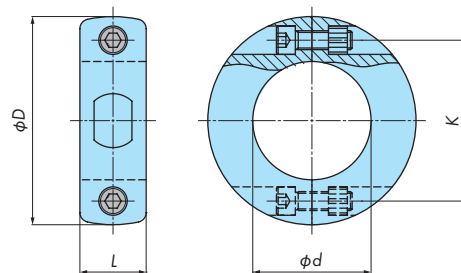
4. Use a cold rolled steel shaft.

# Set collar

TP-C-SCK-R



TP-C-SC-R



Tsubaki model number	Bore Shape	Body						Built-In Parts		Approx. Mass g	Bolt Tightening Torque N·m {kgf·m}	Material	Operating Temperature Range $^\circ\text{C}$
		$\phi d$	W	H	$\phi D$	L	K	Bolt	Nut				
TP-C-SCK-R25M	Round keyway	25	8	28.3	45	14	34	M4×L12 (2 pcs)	Built-in M4 (2 pcs)	24	1.2 {0.122}	Body: polyamide (color: black) Bolt: SUS 304 Nut: SUS 304	-20 to 40
TP-C-SC-R25M	Round		—	—									

Notes: 1. Standard product.

2. Do not mix these products with other pairs.

3. Contact a Tsubaki representative for information on set collars when using sprockets other than the above.





## TSUBAKIMOTO CHAIN CO.

Japan

Tsubakimoto Chain Co.

<https://tsubakimoto.com/>

### Global Group Companies

#### AMERICAS

United States

U.S. Tsubaki Power Transmission, LLC

<https://www.ustsubaki.com/>

Brazil

Tsubaki Brasil Equipamentos Industriais Ltda.

<https://tsubaki.ind.br/>

Canada

Tsubaki of Canada Limited

<https://tsubaki.ca/>

#### EUROPE

Netherlands

Tsubakimoto Europe B.V.

<https://tsubaki.eu/>

France

Kabelschlepp France S.A.R.L.

<https://tsubaki-kabelschlepp.com/fr-fr/>

Germany

Tsubaki Deutschland GmbH

<https://tsubaki.de/>

Italy

Tsubaki Kabelschlepp GmbH

<https://tsubaki-kabelschlepp.com/de-de/>

Spain

Kabelschlepp Italia S.R.L.

<https://tsubaki-kabelschlepp.com/it-it/>

United Kingdom

Tsubaki Ibérica Power Transmission S.L.

<https://tsubaki.es/>

Slovakia

Tsubakimoto UK Ltd.

<https://tsubaki.eu/>

Poland

Kabelschlepp-Systemtechnik, spol. s.r.o.

<https://tsubaki-kabelschlepp.com/sk-sk/>

Kabelschlepp Sp. z o.o.

<https://kabelschlepp.pl/>

#### INDIAN OCEAN RIM

Singapore

Tsubakimoto Singapore Pte. Ltd.

<https://tsubaki.sg/>

Australia

Tsubaki Australia Pty. Limited

<https://tsubaki.com.au/>

India

Tsubaki India Power Transmission Private Limited

<https://en.tsubaki.in/>

Indonesia

PT. Tsubaki Indonesia Trading

<https://tsubaki.id/>

Malaysia

Tsubaki Power Transmission (Malaysia) Sdn. Bhd.

<https://en.tsubaki.my/>

New Zealand

Tsubaki Australia Pty. Limited - New Zealand Branch

<https://tsubaki.com.au/>

Philippines

Tsubakimoto Philippines Corporation

<https://en.tsubaki.ph/>

Thailand

Tsubakimoto (Thailand) Co., Ltd.

<https://tsubaki.co.th/>

Vietnam

Tsubakimoto Vietnam Co., Ltd.

<https://tsubaki.net.vn/>

#### EAST ASIA

Republic of Korea

Tsubakimoto Korea Co., Ltd.

<https://tsubakimoto-tck.co.kr/>

Taiwan

Taiwan Tsubakimoto Trading Co., Ltd.

<https://tsubakimoto.tw/>

#### CHINA

China

Tsubakimoto Chain (Shanghai) Co., Ltd.

<https://www.tsubaki-sh.cn/>



The Tsubaki Eco Link logo is used only on products that satisfy the standards for environmental friendliness set by the Tsubaki Group.